



FACT BOOK 2010-2011

**OFFICE OF RESEARCH, PLANNING
& INFORMATION SERVICES**

FACT BOOK

TABLE OF CONTENTS

| | |
|---|-----------|
| GENERAL INFORMATION | 3 |
| Lassen Community College Profile and Student Snapshot | 4 |
| History of Lassen Community College, Accreditation and Vision | 5 |
| LCC Mission, Values, Strategic Goals and Institutional Student Learning Outcomes Programs | 6 |
| | 7 |
| LCCD Organizational Charts | 10 |
| LCCD Board of Trustees | 11 |
| President/Superintendent's Office | 12 |
| Academic Services | 13 |
| Administrative Services | 14 |
| Student Services | 15 |
| STUDENTS | 15 |
| Total Enrollment: Full-Time, Part-Time and FTE/Fall 2007 to Fall 2010 | 16 |
| Student Outcomes by Gender and BOGG/Fall 2007 to Fall 2010 | 17 |
| Student Outcomes by Age Group/Fall 2007 to Fall 2010 | 18 |
| Student Outcomes by Enrollment Status/Fall 2007 to Fall 2010 | 19 |
| Total Enrollment: Full-Time, Part-Time and FTE/Spring 2008 to Spring 2011 | 20 |
| Student Outcomes by Gender and BOGG/Spring 2008 and Spring 2011 | 21 |
| Student Outcomes by Age Group/ Spring 2008 and Spring 2011 | 22 |
| Student Outcomes by Enrollment Status/Spring 2008 and Spring 2011 | 23 |
| Total Enrollment: Full-Time, Part-Time and FTES/Summer 2007 to Summer 2011 | 24 |
| Student Outcomes by Gender/Summer 2007 to Summer 2010 | 25 |
| Student Outcomes by Age Group/Summer 2007 to Summer 2010 | 26 |
| Student Outcomes by Enrollment Status/ Summer 2007 to Summer 2010 | 27 |
| Student Financial Aid Fiscal Year 2003-2004 to 2009-2010 | 28 |
| Enrollment Fees/Tuition by Residence Status | 29 |
| Enrollment by Term: Status | 30 |
| Enrollment by Term: Resident Status | 31 |
| Enrollment by Term: Gender | 32 |
| Enrollment by Term: Ethnicity | 33 |
| Enrollment by Term: Age Group, Average Age | 34 |
| FTES by Subject: Three Year Comparison | 35 |
| AWARDS | 37 |
| Degrees/Certificates Awarded AY 2004-2005 to 2010-2011 | 38 |
| Awards by Award Level | 39 |
| SECTIONS | 40 |
| Sections by Modality and Day/Evening for AY 2007-2008 to 2010-2011 | 41 |
| Sections: Days by Academic Year | 42 |
| Sections by Modality/Fall 2007 to Fall 2010 | 43 |
| BASIC SKILLS | 44 |
| Basic Skills Total Enrollment | 45 |
| Basic Skills Assessment Fall 2007-2010 | 46 |

FACT BOOK

TABLE OF CONTENTS

| | |
|---|-----------|
| LCCD EMPLOYEES | 47 |
| Employee Job Category by Position | 48 |
| LCCD Employees: Gender, Age, Years of Service Fall | 49 |
| REVENUES AND EXPENDITURES | 50 |
| Actual Revenues: Restricted and Unrestricted | 51 |
| Revenue by Source | 52 |
| Actual Expenditures: Restricted and Unrestricted | 53 |
| Expenditure by Category | 54 |
| PROGRAM SPECIFIC DATA | 55 |
| Fall Outcomes by Modality | 56 |
| Spring Outcomes by Modality | 57 |
| Summer Outcomes by Modality | 58 |
| Categorical Programs - Student Numbers | 59 |
| Athletes by Sport | 60 |
| LIBRARY | 61 |
| Library Holdings and Services | 62 |
| PHYSICAL FACILITIES | 63 |
| Net Square Footage by Type | 64 |
| Annual Campus Security Report | 65 |
| OUTREACH | 66 |
| Regional High School Graduates - Students and Awards 2008-09 to 2010-11 | 67 |

GENERAL INFORMATION

GENERAL INFORMATION

PROFILE

Lassen Community College (LCC), in the high mountain lake country of northeastern California, looks out over Susanville to the Sierra Nevada Mountains. With a dedicated faculty and an average class size of 20 students, LCC offers over 60 degree and certificate programs in arts and sciences, in business, and in vocational fields. LCC is committed to helping students transfer to four-year colleges and universities. The College offers basic skills instruction, evening and weekend classes, support services that help students succeed at all levels, adult non-credit education, intercollegiate athletics, and community service courses and programs.

The College serves inmate populations at state and federal prison facilities located in the area. The college-operated Coppervale Ski Hill is just 14 miles from campus; the College's Eagle Lake Marina is 20 miles away. Lassen College is truly a community college - open to everyone.

Funding for LCC's programs and most construction and equipment comes from California state appropriations.

Tuition and fees are moderate, and financial aid is available to those who qualify.

LCC's academic year is divided into two primary terms: fall (begins in August), spring (begins in January), and a summer term (begins in May). Short sessions, non-traditional schedules and correspondence delivery are available for many programs and courses.

STUDENT SNAPSHOT - Fall 2010

Official headcount in Fall 2010 is 3,029.

Students enrolled full-time represent 22.5 percent of the student population.

Students coming from California represent 95.0 percent of the student population.

Males are a majority at LCC, accounting for 69.6 percent of the Fall 2009 enrollment.

Minority students represent 48.4 percent of the college's enrollment.

The average age of the total student body during Fall 2010 is 32.7 years of age.

GENERAL INFORMATION

HISTORY OF LASSEN COMMUNITY COLLEGE

The forerunner of Lassen Community College began on May 4, 1925, when the Junior College department of the Lassen Union High School District was established and began conducting classes on the Lassen High School Campus.

A separate facility was created in 1941 with the remodeling of a Main Street garage into a classroom building. In 1945, because of increasing enrollment, a new building was built adjacent to the high school. The modern era of LCC began in March 1965 with the establishment of the Lassen Community College District and the separation from the high school district. A separate Board of Trustees was elected and planning began for a new campus.

The new campus, located on Highway 139, today consists of 165 acres and 42 structures, including 19 main buildings. The new campus dedicated in May, 1973, includes classrooms, laboratories, and offices, LCC has a dormitory with a capacity of 124, a library, college union, computer rooms, a large gymnasium and outdoor recreation facilities.

Lassen Community College is located in Susanville in the high mountain lake country of northeastern California. The campus looks out over the city to Diamond Mountain and the Sierra Nevada Mountains. Eagle Lake, the third largest lake wholly contained in California, is only 20 miles away. The college-operated Coppervale Ski Hill is just 14 miles from the campus.

INSTITUTIONAL ACCREDITATION

Lassen Community College is accredited by Western Association of Schools and Colleges (WASC) through the Accrediting Commission for Community and Junior Colleges. WASC is recognized by the California Post Secondary Education Commission and the U.S. Department of Education.

LCC is accredited to award certificates and associate in science (AS) and associate in arts (AA) degrees.

LASSEN COMMUNITY COLLEGE VISION

The Governing Board's Vision for Lassen Community College is to:

- Be an **Academic Leader** by ensuring Quality and Student Success
- Be an **Educational Leader** by expanding Outreach and Student Access
- Be a **Trusted Steward** by providing capable Leadership and Accountability
- Be an **Economic and Workforce Development Leader** for the Community
- Be a **Cultural Leader** in the Community
- Be a **Civic and Social Leader** in the Community

GENERAL INFORMATION

MISSION, VALUES, GOALS AND STUDENT LEARNING OUTCOMES

LCC- KEEPING AN EYE ON THE FUTURE

MISSION

Lassen Community College provides outstanding programs for all those pursuing higher education goals. These programs offer a wide range of educational opportunities including transfer degrees and certificate programs, economic and workforce development, basic skills instruction, and support services that ensure students succeed at the post-secondary level. They also include non-credit, and community service courses and programs that enhance the community culturally, civically and socially. The college serves the community, both on campus and in the outreach centers in its effort to build intellectual growth, human perspective and economic potential.

VALUES

Educational Excellence, Student Focus, Honesty/Integrity, Student Success, Dignity/Respect

STRATEGIC GOALS

- 1 Student Success:** Enable students' attainment of educational goals, including degrees and certificates, transfer, job placement and advancement, basic skills and lifelong learning.
- 2 Responsive Curricula:** Develop and implement curricula that are responsive to changing student learning needs, to changing economic and workforce development needs, and to community cultural, social and civic interests.
- 3 Student Access:** Provide a college environment that reaches-out-to and supports students, minimizes barriers, increases opportunity, and increases success through access and retention.
- 4 Resource Development:** Develop and manage human, physical, technological and financial resources to promote growth and to effectively support the learning environment.
- 5 Organizational Effectiveness:** Enhance organizational function in leadership, interaction, planning, and accountability to ensure responsive stewardship of public trust and resources.
- 6 Community Leadership:** Provide an environment that supports, partners and leads in the development and implementation of community initiatives.

INSTITUTIONAL STUDENT LEARNING OUTCOMES

- 1 Communication:** Ability to listen and read with comprehension and the ability to write and speak effectively
- 2 Critical Thinking:** Ability to analyze a situation, identify and research a problem, propose a solution or desired outcome, implement a plan to address the problem, evaluate progress and adjust the plan as appropriate to arrive at the solution or desired outcome
- 3 Life Long Learning:** Ability to engage in independent acquisition of knowledge; ability to access information including use of current technology; ability to use the Internet and/or library to access and analyze information for relevance and accuracy; ability to navigate systems
- 4 Personal/Interpersonal Responsibility:** Ability to develop and apply strategies to set realistic goals for personal, educational, career, and community development; ability to apply standards of personal and professional integrity; ability to cooperate with others in a collaborative environment for accomplishment of goals; ability to interact successfully with other cultures

GENERAL INFORMATION

LCCD PROGRAMS

2010-2011

Administration of Justice/ Correctional Science

Associate in Arts Degree University Studies: Emphasis in Administration of Justice
Associate in Science Degree in Administration of Justice
Certificate of Achievement in Administration of Justice
Certificate of Accomplishment in Administration of Justice Reserve Office Training
Level III, Safety & Security Personnel
Associate in Science Degree in Correctional Science
Certificate of Achievement in Correctional Science

Agriculture

Associate in Arts Degree University Studies: Emphasis in Agriculture Sciences
Associate in Science Degree in Agriculture Science and Technology
Certificate of Achievement in Agriculture Science and Technology
Certificate of Accomplishment in Animal Science
Certificate of Accomplishment in Horsemanship
Certificate of Accomplishment in Horticulture

Automotive Technology

Associate in Science Degree in Automotive Technology
Certificate of Achievement in General Mechanics
Certificate of Achievement in Tune-Up

Business

Associate in Arts Degree University Studies: Emphasis in Business Administration
Associate in Science Degree in Accounting
Associate in Science Degree in Office Administrative Assistant
Certificate of Achievement in Office Administrative Assistant
Certificate of Accomplishment in Real Estate

Child Development

Associate in Arts Degree University Studies: Emphasis in Child Development
Associate in Arts Degree in Child Development
Certificate of Achievement in Child Development
Certificate of Accomplishment in Child Development Associate Teacher

Fine Art/Humanities

Associate in Arts Degree University Studies: Emphasis in Art
Certificate of Accomplishment in Graphic Design
Associate in Arts Degree University Studies: Emphasis in Humanities

GENERAL INFORMATION

LCCD PROGRAMS

2010-2011

Fire Technology

Associate in Science Degree in Fire Technology

Certificate of Achievement in Fire Technology

Gunsmithing

Associate in Science Degree in Firearms Repair

Associate in Science Degree in General Gunsmithing

Certificate of Accomplishment in Gunsmith Machinist and Metal Finishing

Certificate of Accomplishment in Long Guns

Certificate of Accomplishment in Pistolsmith

Certificate of Accomplishment in Riflesmith

Human Services

Associate in Science Degree in Drug and Alcohol Paraprofessional

Associate in Science Degree in Human Services

Certificate of Achievement in Drug and Alcohol Paraprofessional

Certificate of Achievement in Human Services

Social Science

Associate in Arts Degree University Studies: Emphasis in Social Sciences

Associate in Arts Degree General Studies: Emphasis in Social Sciences

California State University General Education Certificate of Achievement

Intersegmental General Education Transfer Curriculum Certificate of Achievement

Journalism

Associate in Science Degree in Journalism

Certificate of Achievement in Journalism

Mathematics/Natural Science

Associate in Arts Degree University Studies: Emphasis in Allied Health

Associate in Science Degree University Studies: Biological Science Major Preparation

Associate in Science Degree University Studies: Emphasis in Mathematics/Physical Science

Associate in Arts Degree University Studies: Emphasis in Natural Sciences

Associate in Arts Degree General Studies: Emphasis in Natural Sciences

Nursing

Associate in Science Degree in Vocational Nursing

Certificate of Achievement in Vocation Nursing

GENERAL INFORMATION

LCCD PROGRAMS

2010-2011

Physical Education

Associate in Arts Degree University Studies: Emphasis in Physical Education

Associate in Arts Degree General Studies: Emphasis in Physical Education

Welding Technology

Associate in Science Degree in Welding Technology

Two-Year Certificate of Achievement in Welding Technology

One-Year Certificate of Achievement in Welding Technology

Certificate of Accomplishment in Welding Technology

Special Instructional Programs:

Basic Skills (including English as a Second Language)

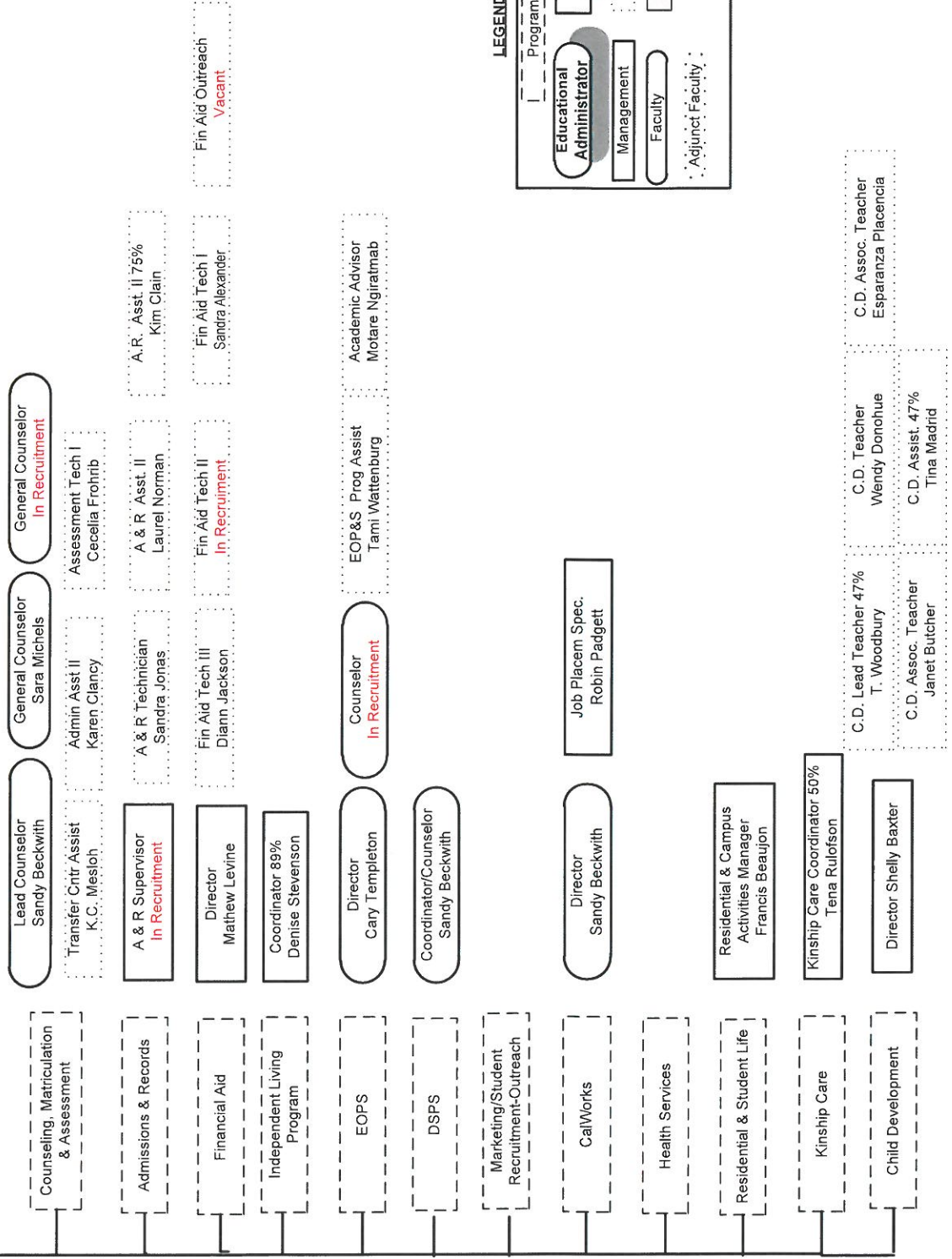
Developmental Studies

Work Experience

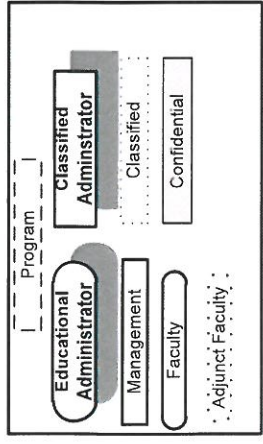
LCCD
ORGANIZATIONAL CHARTS

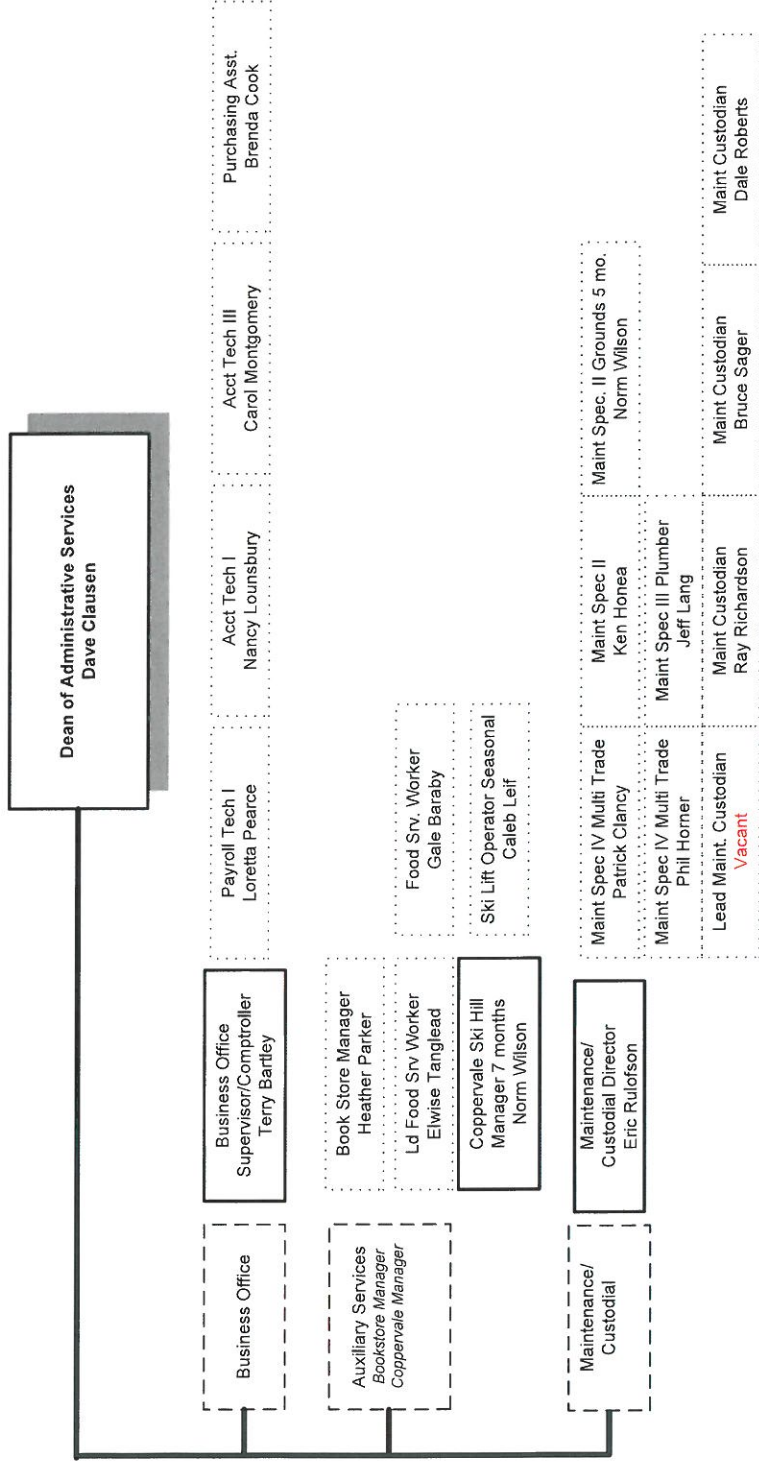
Last Edited
2011-2012
6/30/11

Dean Student Services
Cary Templeton

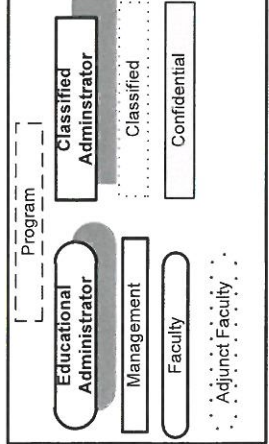


LEGEND





LEGEND



2011-2011
7/19/11
Administrative assignments
adopted 3/22/11

LASSEN COMMUNITY COLLEGE DISTRICT
BOARD OF TRUSTEES

Interim Superintendent/President
Bill Studd

Executive Assistant
Julie Johnston

PIO/PR

Accreditation
Liaison
Sue Mouck

Consultation Council
Chair
Sue Mouck

Dean of
Administrative Services
Dave Clausen

Business Office
Supervisor/
Comptroller
Terry Bartley

Auxiliary Services
Bookstore Manager
Coppervale Manager

Human Resources
HR Manager -
Vickie Ramsey

Maintenance/
Custodial
Director -
Eric Rulofson

Dean of
Student Services
Cary Templeton

Marketing & Advertising

Counseling, Matriculation
& Assessment

Admissions & Records

Financial Aid

EOPS

DSPS

CalWorks

Student Recruitment &
Outreach

Student Health Services

Student Life

Kinship Care

Independent Living
Program

Child Development

Dean of Academic Services
Dr. Kayleigh Carabajal

Institutional Research

Information
Technology

Planning and
Reporting

Grant Development

Distance Education/
Correspondence

Library

Learning Center

Basic Skills

Contract Ed.
Workforce
Development

Community Service

Athletic Director

Fire Science Director

POST Program Director

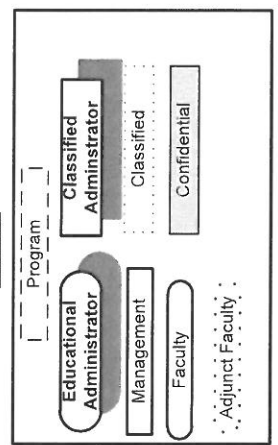
Career & Technical Education/
Physical Education

Humanities/Social Science

Business/The Sciences

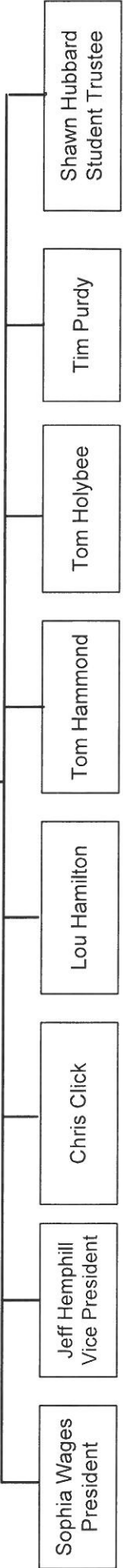
Math/English

Vice President Academic Services
Vacant



LASSEN COMMUNITY COLLEGE
DISTRICT
BOARD OF TRUSTEES

Secretary to the Board
Superintendent/President
Bill Studt, Interim



Sophia Wages
President

Jeff Hemphill
Vice President

Chris Click

Lou Hamilton

Tom Hammond

Tom Holybee

Tim Purdy

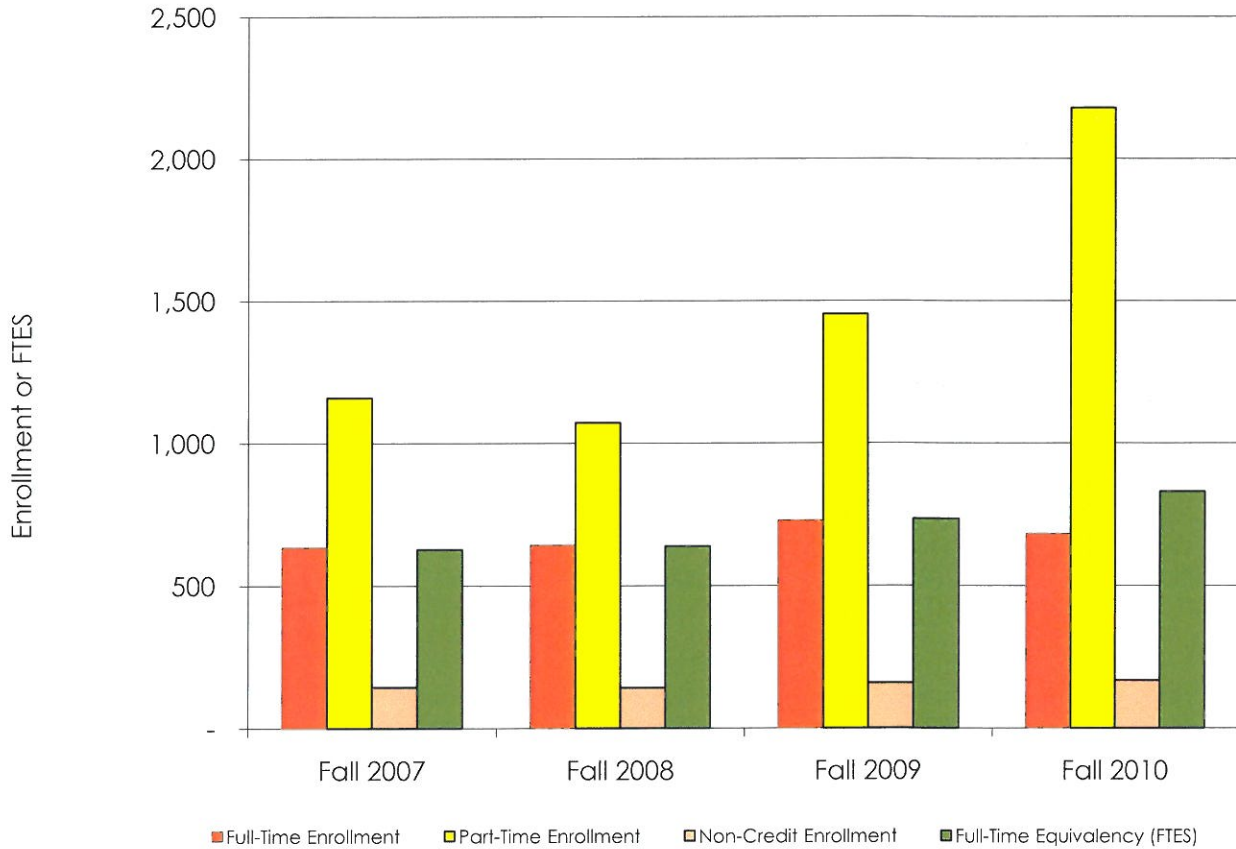
Shawn Hubbard
Student Trustee

STUDENTS

STUDENTS

TOTAL ENROLLMENT: FULL-TIME, PART-TIME, NON-CREDIT AND FTES

Fall 2007 to Fall 2010



| | Full-Time Enrollment | % | Part-Time Enrollment | % | Non-Credit Enrollment | Total Enrollment | Full-Time Equivalency (FTES) |
|------------------|----------------------|--------|----------------------|--------|-----------------------|------------------|------------------------------|
| Fall 2007 | 635 | 32.75% | 1,160 | 59.82% | 144 | 1,939 | 627 |
| Fall 2008 | 642 | 34.57% | 1,073 | 57.78% | 142 | 1,857 | 638 |
| Fall 2009 | 729 | 31.14% | 1,454 | 62.11% | 158 | 2,341 | 735 |
| Fall 2010 | 682 | 22.50% | 2,179 | 71.90% | 168 | 3,029 | 831 |

STUDENTS

STUDENT OUTCOMES BY GENDER AND BOGG

Fall 2007 to Fall 2010

| | Fall 2007 | All Fall 2007 | Fall 2008 | All Fall 2008 | Fall 2009 | All Fall 2009 | Fall 2010 | All Fall 2010 |
|----------------------------|---------------|------------------|---------------|------------------|---------------|------------------|---------------|------------------|
| FEMALE | 47.65% | 1939 | 48.63% | 1857 | 39.02% | 2345 | 30.44% | 3029 |
| Course Retention Rate | 87.78% | 83.71% | 85.98% | 86.38% | 86.50% | 83.72% | 84.95% | 84.89% |
| Course Success Rate | 66.19% | 66.68% | 67.11% | 67.94% | 65.16% | 61.57% | 68.75% | 68.64% |
| Transfer Ready Rate | 5.84% | 5.57% | 8.97% | 5.06% | 6.45% | 4.14% | 3.15% | 1.16% |
| Next Term Persistence Rate | 57.90% | 53.69% | 65.56% | 65.48% | 61.31% | 53.94% | 62.58% | 51.54% |
| Next Year Persistence Rate | 39.18% | 33.99% | 41.64% | 42.00% | NA | NA | 21.37% | 25.35% |
| Avg. GPA | 2.80 | 2.81 | 2.88 | 2.86 | 2.78 | 2.67 | 2.69 | 2.63 |
| Avg. Units Enrolled | 6.7 | 7.2 | 7.3 | 7.6 | 7.2 | 7.3 | 7.7 | 6.7 |
| MALE | 52.09% | 1939 | 51.37% | 1857 | 60.30% | 2345 | 69.56% | 3029 |
| Course Retention Rate | 80.82% | 83.71% | 86.71% | 86.38% | 82.07% | 83.72% | 84.86% | 84.89% |
| Course Success Rate | 67.22% | 66.68% | 68.66% | 67.94% | 59.43% | 61.57% | 68.58% | 68.64% |
| Transfer Ready Rate | 5.35% | 5.57% | 1.36% | 5.06% | 2.69% | 4.14% | 0.28% | 1.16% |
| Next Term Persistence Rate | 50.10% | 53.69% | 65.41% | 65.48% | 49.22% | 53.94% | 46.70% | 51.54% |
| Next Year Persistence Rate | 29.41% | 33.99% | 42.35% | 42.00% | NA | NA | 27.10% | 25.35% |
| Avg. GPA | 2.83 | 2.81 | 2.84 | 2.86 | 2.59 | 2.67 | 2.60 | 2.63 |
| Avg. Units Enrolled | 7.8 | 7.2 | 7.8 | 7.6 | 7.3 | 7.3 | 6.2 | 6.7 |
| | Fall 2007 | All Fall 2007 | Fall 2008 | All Fall 2008 | Fall 2009 | All Fall 2009 | Fall 2010 | All Fall 2010 |
| BOGG Yes | 49.56% | 1939 | 54.12% | 1857 | 62.09% | 2345 | 72.53% | 3029 |
| Course Retention Rate | 78.33% | 83.71% | 83.76% | 86.38% | 80.60% | 83.72% | 82.76% | 84.89% |
| Course Success Rate | 61.33% | 66.68% | 63.31% | 67.94% | 58.02% | 61.57% | 65.97% | 68.64% |
| Transfer Ready Rate | 7.08% | 5.57% | 5.67% | 5.06% | 2.68% | 4.14% | 0.77% | 1.16% |
| Next Term Persistence Rate | 59.00% | 53.69% | 70.15% | 65.48% | 55.22% | 53.94% | 51.80% | 51.54% |
| Next Year Persistence Rate | 36.32% | 33.99% | 45.57% | 42.00% | NA | NA | 28.54% | 25.35% |
| Avg. GPA | 2.75 | 2.81 | 2.77 | 2.86 | 2.57 | 2.67 | 2.53 | 2.63 |
| Avg. Units Enrolled | 9.1 | 7.2 | 8.8 | 7.6 | 8.3 | 7.3 | 6.8 | 6.7 |
| BOGG No | 50.44% | 1939 | 45.88% | 1857 | 37.91% | 2345 | 27.47% | 3029 |
| Course Retention Rate | 91.45% | 83.71% | 90.37% | 86.38% | 90.31% | 83.72% | 90.45% | 84.89% |
| Course Success Rate | 74.38% | 66.68% | 75.01% | 67.94% | 69.07% | 61.57% | 75.58% | 68.64% |
| Transfer Ready Rate | 4.09% | 5.57% | 4.34% | 5.06% | 6.52% | 4.14% | 2.16% | 1.16% |
| Next Term Persistence Rate | 48.47% | 53.69% | 59.98% | 65.48% | 51.86% | 53.94% | 50.84% | 51.54% |
| Next Year Persistence Rate | 31.70% | 33.99% | 37.91% | 42.00% | NA | NA | 16.95% | 25.35% |
| Avg. GPA | 2.91 | 2.81 | 3.00 | 2.86 | 2.87 | 2.67 | 2.86 | 2.63 |
| Avg. Units Enrolled | 5.4 | 7.2 | 6.1 | 7.6 | 5.6 | 7.3 | 6.3 | 6.7 |

STUDENTS

STUDENT OUTCOMES BY AGE GROUP Fall 2007 to Fall 2010

| | Fall 2007 | All Fall 2007 | Fall 2008 | All Fall 2008 | Fall 2009 | All Fall 2009 | Fall 2010 | All Fall 2010 |
|----------------------------|---------------|---------------|---------------|---------------|---------------|---------------|---------------|---------------|
| 17 and Under | 7.79% | 1939 | 6.35% | 1857 | 5.42% | 2345 | 3.04% | 3,029 |
| Course Retention Rate | 88.68% | 83.71% | 85.58% | 86.38% | 89.79% | 83.72% | 90.63% | 84.89% |
| Course Success Rate | 67.30% | 66.68% | 63.64% | 67.94% | 57.69% | 61.57% | 77.08% | 68.64% |
| Transfer Ready Rate | 0.00% | 5.57% | 0.00% | 5.06% | 0.00% | 4.14% | 0.00% | 1.16% |
| Next Term Persistence Rate | 64.90% | 53.69% | 66.95% | 65.48% | 54.33% | 53.94% | 64.13% | 51.54% |
| Next Year Persistence Rate | 37.09% | 33.99% | 36.44% | 42.00% | NA | NA | 20.65% | 25.35% |
| Avg. GPA | 2.89 | 2.81 | 2.69 | 2.86 | 2.69 | 2.67 | 2.86 | 2.63 |
| Avg. Units Enrolled | 5.1 | 7.2 | 6.7 | 7.6 | 6.3 | 7.3 | 6.1 | 6.7 |
| 18-20 | 18.72% | 1939 | 21.27% | 1857 | 19.45% | 2345 | 17.27% | 3,029 |
| Course Retention Rate | 86.81% | 83.71% | 86.27% | 86.38% | 86.14% | 83.72% | 87.52% | 84.89% |
| Course Success Rate | 70.42% | 66.68% | 67.52% | 67.94% | 63.89% | 61.57% | 67.19% | 68.64% |
| Transfer Ready Rate | 6.06% | 5.57% | 7.34% | 5.06% | 4.61% | 4.14% | 1.34% | 1.16% |
| Next Term Persistence Rate | 61.98% | 53.69% | 76.96% | 65.48% | 64.91% | 53.94% | 63.29% | 51.54% |
| Next Year Persistence Rate | 34.99% | 33.99% | 44.81% | 42.00% | NA | NA | 26.20% | 25.35% |
| Avg. GPA | 2.59 | 2.81 | 2.71 | 2.86 | 2.57 | 2.67 | 2.32 | 2.63 |
| Avg. Units Enrolled | 11.7 | 7.2 | 11.7 | 7.6 | 10.7 | 7.3 | 11.0 | 6.7 |
| 21-24 | 10.68% | 1939 | 12.06% | 1857 | 12.15% | 2345 | 13.90% | 3,029 |
| Course Retention Rate | 83.90% | 83.71% | 84.97% | 86.38% | 82.52% | 83.72% | 80.56% | 84.89% |
| Course Success Rate | 68.98% | 66.68% | 67.23% | 67.94% | 62.60% | 61.57% | 63.30% | 68.64% |
| Transfer Ready Rate | 19.81% | 5.57% | 8.04% | 5.06% | 10.88% | 4.14% | 1.90% | 1.16% |
| Next Term Persistence Rate | 59.90% | 53.69% | 61.16% | 65.48% | 56.14% | 53.94% | 48.46% | 51.54% |
| Next Year Persistence Rate | 31.88% | 33.99% | 40.63% | 42.00% | NA | NA | 17.34% | 25.35% |
| Avg. GPA | 2.77 | 2.81 | 2.81 | 2.86 | 2.63 | 2.67 | 2.47 | 2.63 |
| Avg. Units Enrolled | 9.0 | 7.2 | 8.2 | 7.6 | 8.7 | 7.3 | 7.2 | 6.7 |
| 25-34 | 20.84% | 1939 | 21.27% | 1857 | 22.39% | 2345 | 27.40% | 3,029 |
| Course Retention Rate | 76.84% | 83.71% | 83.71% | 86.38% | 79.59% | 83.72% | 82.98% | 84.89% |
| Course Success Rate | 60.86% | 66.68% | 64.83% | 67.94% | 57.10% | 61.57% | 69.06% | 68.64% |
| Transfer Ready Rate | 4.70% | 5.57% | 7.09% | 5.06% | 3.05% | 4.14% | 1.08% | 1.16% |
| Next Term Persistence Rate | 49.75% | 53.69% | 63.54% | 65.48% | 49.14% | 53.94% | 41.33% | 51.54% |
| Next Year Persistence Rate | 29.95% | 33.99% | 40.25% | 42.00% | NA | NA | 22.29% | 25.35% |
| Avg. GPA | 2.85 | 2.81 | 2.90 | 2.86 | 2.63 | 2.67 | 2.62 | 2.63 |
| Avg. Units Enrolled | 8.1 | 7.2 | 7.9 | 7.6 | 7.4 | 7.3 | 5.7 | 6.7 |
| 35-49 | 23.36% | 1939 | 22.40% | 1857 | 25.76% | 2345 | 27.47% | 3,029 |
| Course Retention Rate | 81.01% | 83.71% | 88.64% | 86.38% | 82.72% | 83.72% | 84.94% | 84.89% |
| Course Success Rate | 66.41% | 66.68% | 70.36% | 67.94% | 60.46% | 61.57% | 68.75% | 68.64% |
| Transfer Ready Rate | 5.08% | 5.57% | 2.64% | 5.06% | 4.30% | 4.14% | 1.08% | 1.16% |
| Next Term Persistence Rate | 45.47% | 53.69% | 62.26% | 65.48% | 49.67% | 53.94% | 52.64% | 51.54% |
| Next Year Persistence Rate | 31.57% | 33.99% | 41.11% | 42.00% | NA | NA | 32.57% | 25.35% |
| Avg. GPA | 2.99 | 2.81 | 3.01 | 2.86 | 2.70 | 2.67 | 2.69 | 2.63 |
| Avg. Units Enrolled | 6.5 | 7.2 | 6.6 | 7.6 | 6.2 | 7.3 | 5.8 | 6.7 |
| 50 and over | 18.62% | 1939 | 16.59% | 1857 | 14.75% | 2345 | 10.93% | 3,029 |
| Course Retention Rate | 91.50% | 83.71% | 90.47% | 86.38% | 86.87% | 83.72% | 87.88% | 84.89% |
| Course Success Rate | 65.83% | 66.68% | 74.82% | 67.94% | 67.18% | 61.57% | 80.38% | 68.64% |
| Transfer Ready Rate | 83.00% | 5.57% | 2.60% | 5.06% | 87.00% | 4.14% | 0.60% | 1.16% |
| Next Term Persistence Rate | 51.80% | 53.69% | 60.06% | 65.48% | 52.60% | 53.94% | 56.19% | 51.54% |
| Next Year Persistence Rate | 40.44% | 33.99% | 44.81% | 42.00% | NA | NA | 25.08% | 25.35% |
| Avg. GPA | 3.34 | 2.81 | 3.29 | 2.86 | 3.10 | 2.67 | 3.26 | 2.63 |
| Avg. Units Enrolled | 2.6 | 7.2 | 3.2 | 7.6 | 3.8 | 7.3 | 3.9 | 6.7 |

STUDENTS

STUDENT OUTCOMES BY ENROLLMENT STATUS

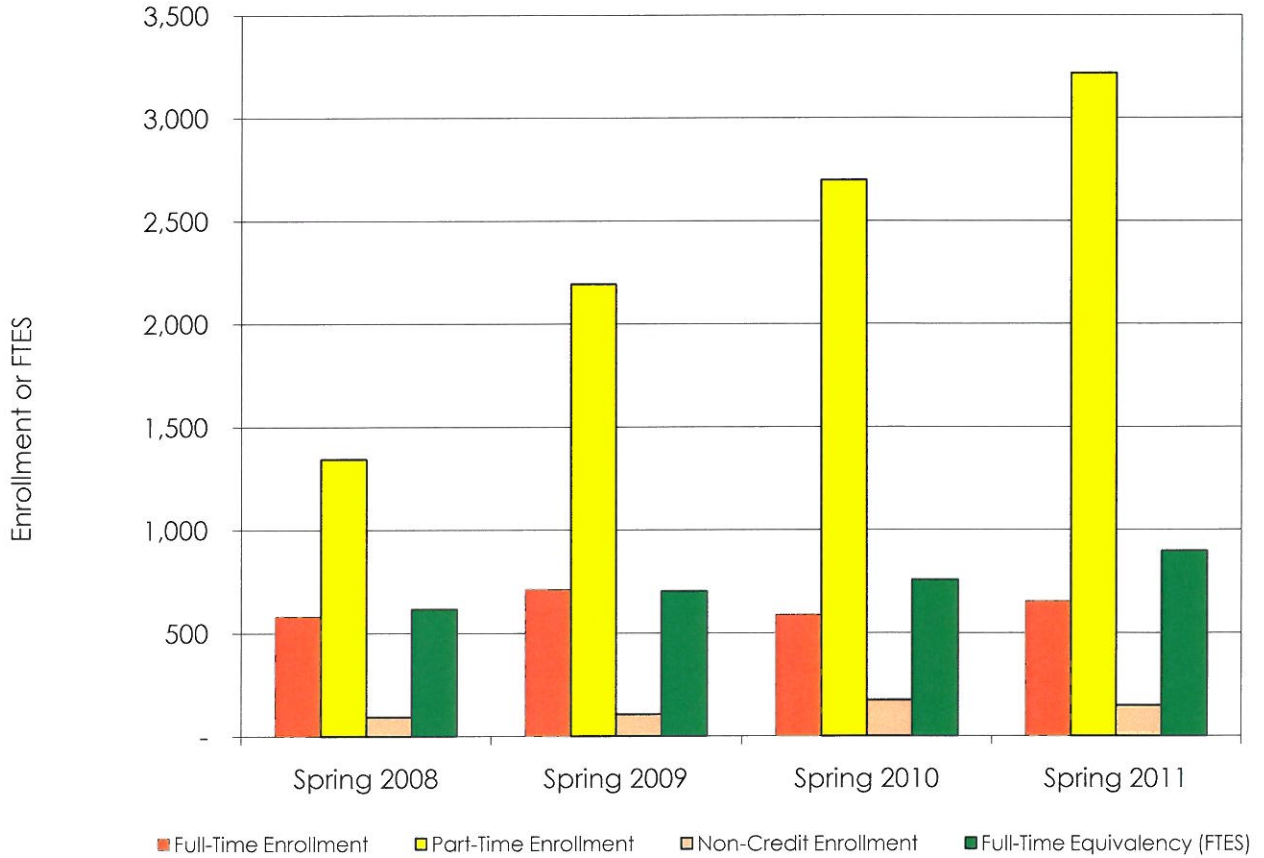
Fall 2007 to Fall 2010

| | Fall 2007 | All Fall 2007 | Fall 2008 | All Fall 2008 | Fall 2009 | All Fall 2009 | Fall 2010 | All Fall 2010 |
|----------------------------|---------------|---------------|---------------|---------------|---------------|---------------|---------------|---------------|
| CONTINUING | 39.76% | 1939 | 42.49% | 1857 | 41.11% | 2345 | 35.72% | 3,029 |
| Course Retention Rate | 85.06% | 83.71% | 88.44% | 86.38% | 85.90% | 83.72% | 84.60% | 84.89% |
| Course Success Rate | 70.31% | 66.68% | 73.11% | 67.94% | 67.49% | 61.57% | 69.31% | 68.64% |
| Transfer Ready Rate | 11.93% | 5.57% | 8.24% | 5.06% | 6.74% | 4.14% | 2.03% | 1.16% |
| Next Term Persistence Rate | 63.04% | 53.69% | 72.12% | 65.48% | 63.80% | 53.94% | 69.50% | 51.54% |
| Next Year Persistence Rate | 40.73% | 33.99% | 44.74% | 42.00% | NA | NA | 31.98% | 25.35% |
| Avg. GPA | 2.91 | 2.81 | 3.00 | 2.86 | 2.79 | 2.67 | 2.71 | 2.63 |
| Avg. Units Enrolled | 8.6 | 7.2 | 8.2 | 7.6 | 8.6 | 7.3 | 8.3 | 6.7 |
| K-12 | 3.82% | 1939 | 2.69% | 1857 | 3.80% | 2345 | 1.82% | 3,029 |
| Course Retention Rate | 92.63% | 83.71% | 88.41% | 86.38% | 90.98% | 83.72% | 96.77% | 84.89% |
| Course Success Rate | 58.95% | 66.68% | 50.72% | 67.94% | 43.44% | 61.57% | 90.32% | 68.64% |
| Transfer Ready Rate | 0.00% | 5.57% | 0.00% | 5.06% | 0.00% | 4.14% | 0.00% | 1.16% |
| Next Term Persistence Rate | 55.41% | 53.69% | 52.00% | 65.48% | 43.82% | 53.94% | 54.55% | 51.54% |
| Next Year Persistence Rate | 20.27% | 33.99% | 22.00% | 42.00% | NA | NA | 14.55% | 25.35% |
| Avg. GPA | 2.97 | 2.81 | 2.61 | 2.86 | 2.83 | 2.67 | 3.11 | 2.63 |
| Avg. Units Enrolled | 2.5 | 7.2 | 2.8 | 7.6 | 2.4 | 7.3 | 1.6 | 6.7 |
| NEW | 31.15% | 1939 | 31.99% | 1857 | 37.27% | 2345 | 50.64% | 3,029 |
| Course Retention Rate | 80.42% | 83.71% | 84.79% | 86.38% | 80.90% | 83.72% | 86.42% | 84.89% |
| Course Success Rate | 65.59% | 66.68% | 63.49% | 67.94% | 54.80% | 61.57% | 69.74% | 68.64% |
| Transfer Ready Rate | 0.00% | 5.57% | 0.00% | 5.06% | 11.00% | 4.14% | 0.00% | 1.16% |
| Next Term Persistence Rate | 48.18% | 53.69% | 66.33% | 65.48% | 49.89% | 53.94% | 39.83% | 51.54% |
| Next Year Persistence Rate | 29.64% | 33.99% | 43.77% | 42.00% | NA | NA | 23.01% | 25.35% |
| Avg. GPA | 2.77 | 2.81 | 2.69 | 2.86 | 2.45 | 2.67 | 2.52 | 2.63 |
| Avg. Units Enrolled | 7.8 | 7.2 | 7.9 | 7.6 | 6.8 | 7.3 | 5.9 | 6.7 |
| RETURNING | 25.27% | 1939 | 22.83% | 1857 | 17.83% | 2345 | 11.82% | 3,029 |
| Course Retention Rate | 85.66% | 83.71% | 84.22% | 86.38% | 82.50% | 83.72% | 79.61% | 84.89% |
| Course Success Rate | 60.21% | 66.68% | 64.82% | 67.94% | 60.55% | 61.57% | 60.57% | 68.64% |
| Transfer Ready Rate | 3.27% | 5.57% | 6.84% | 5.06% | 7.42% | 4.14% | 3.63% | 1.16% |
| Next Term Persistence Rate | 45.51% | 53.69% | 53.54% | 65.48% | 41.87% | 53.94% | 46.93% | 51.54% |
| Next Year Persistence Rate | 30.82% | 33.99% | 36.79% | 42.00% | NA | NA | 17.04% | 25.35% |
| Avg. GPA | 2.64 | 2.81 | 2.82 | 2.86 | 2.73 | 2.67 | 2.64 | 2.63 |
| Avg. Units Enrolled | 5.2 | 7.2 | 6.5 | 7.6 | 6.2 | 7.3 | 5.9 | 6.7 |

STUDENTS

TOTAL ENROLLMENT: FULL-TIME, PART-TIME, NON-CREDIT AND FTES

Spring 2008 to Spring 2011



| | Full-Time Enrollment | % | Part-Time Enrollment | % | Non-Credit Enrollment | Total Enrollment | Full-Time Equivalency (FTES) |
|-------------|----------------------|--------|----------------------|--------|-----------------------|------------------|------------------------------|
| Spring 2008 | 581 | 28.79% | 1,344 | 66.60% | 93 | 2,018 | 616 |
| Spring 2009 | 711 | 23.60% | 2,193 | 72.78% | 106 | 3,013 | 703 |
| Spring 2010 | 588 | 16.98% | 2,699 | 77.96% | 175 | 3,462 | 758 |
| Spring 2011 | 654 | 16.26% | 3,219 | 80.05% | 148 | 4,021 | 897 |

STUDENTS

STUDENT OUTCOMES BY GENDER AND BOGG Spring 2008 to Spring 2011

| | Spring 2008 | All Spring 2008 | Spring 2009 | All Spring 2009 | Spring 2010 | All Spring 2010 | Spring 2011 | All Spring 2011 |
|-------------------------|------------------------|----------------------------|------------------------|----------------------------|------------------------|----------------------------|------------------------|----------------------------|
| FEMALE | 46.19% | 2020 | 35.31% | 3013 | 29.61% | 3,462 | 25.34 % | 4,021 |
| Course Retention Rate | 85.47% | 85.98% | 85.97% | 86.00% | 85.47% | 88.95% | 87.83 % | 87.68 % |
| Course Success Rate | 68.84% | 70.03% | 65.72% | 69.34% | 73.67% | 73.36% | 70.46 % | 70.39 % |
| Transfer Ready Rate | 6.54% | 5.40% | 13.35% | 7.73% | 3.51% | 1.85% | 3.93 % | 1.44 % |
| Next Term Persistence F | 46.73% | 40.64% | 46.05% | 34.55% | 44.10% | 31.66% | 26.30 % | 25.99 % |
| Next Year Persistence | 42.12% | 38.47% | 16.26% | 18.50% | 38.83% | 37.84% | 0.00 % | 0.00 % |
| Avg. GPA | 2.93 | 2.90 | 2.86 | 2.90 | 2.95 | 3.04 | 2.84 | 2.85 |
| Avg. Units Enrolled | 6.7 | 6.7 | 6.7 | 5.5 | 6.3 | 5.1 | 6.9 | 5.5 |
| MALE | 53.76% | 2020 | 64.12% | 3013 | 70.34% | 3,462 | 74.66 % | 4,021 |
| Course Retention Rate | 86.73% | 85.98% | 86.05% | 86.00% | 85.83% | 88.95% | 87.61 % | 87.68 % |
| Course Success Rate | 70.93% | 70.03% | 71.75% | 69.34% | 73.33% | 73.36% | 70.37 % | 70.39 % |
| Transfer Ready Rate | 4.42% | 5.40% | 4.71% | 7.73% | 1.15% | 1.85% | 0.60 % | 1.44 % |
| Next Term Persistence F | 35.45% | 40.64% | 28.36% | 34.55% | 26.45% | 31.66% | 25.88 % | 25.99 % |
| Next Year Persistence | 35.36% | 38.47% | 7.76% | 18.50% | 37.45% | 37.84% | 0.00 % | 0.00 % |
| Avg. GPA | 2.88 | 2.90 | 2.93 | 2.90 | 3.08 | 3.04 | 2.85 | 2.85 |
| Avg. Units Enrolled | 6.8 | 6.7 | 4.8 | 5.5 | 4.6 | 5.1 | 5.0 | 5.5 |
| | Spring 2008 | All Spring 2008 | Spring 2009 | All Spring 2009 | Spring 2010 | All Spring 2010 | Spring 2011 | All Spring 2011 |
| BOGG Yes | 44.01% | 2020 | 36.54% | 3013 | 47.86% | 3,462 | 62.05% | 4,021 |
| Course Retention Rate | 83.70% | 85.98% | 80.52% | 86.00% | 79.98% | 88.95% | 85.22% | 87.68% |
| Course Success Rate | 64.37% | 70.03% | 61.17% | 69.34% | 67.14% | 73.36% | 65.25% | 70.39% |
| Transfer Ready Rate | 8.66% | 5.40% | 9.17% | 7.73% | 1.57% | 1.85% | 1.28% | 1.44% |
| Next Term Persistence F | 50.66% | 40.64% | 54.86% | 34.55% | 43.75% | 31.66% | 33.87% | 25.99% |
| Next Year Persistence | 43.98% | 38.47% | 18.17% | 18.50% | 38.68% | 37.84% | 0.00% | 0.00% |
| Avg. GPA | 2.78 | 2.90 | 2.80 | 2.90 | 2.40 | 3.04 | 2.43 | 2.85 |
| Avg. Units Enrolled | 9.2 | 6.7 | 9.3 | 5.5 | 7.4 | 5.1 | 6.7 | 5.5 |
| BOGG No | 55.99% | 2020 | 63.46% | 3013 | 52.14% | 3,462 | 37.95% | 4,021 |
| Course Retention Rate | 90.24% | 85.98% | 92.57% | 86.00% | 92.44% | 88.95% | 93.20% | 87.68% |
| Course Success Rate | 77.39% | 70.03% | 79.14% | 69.34% | 83.46% | 73.36% | 81.93% | 70.39% |
| Transfer Ready Rate | 2.83% | 5.40% | 6.90% | 7.73% | 2.11% | 1.85% | 1.70% | 1.44% |
| Next Term Persistence F | 33.24% | 40.64% | 22.86% | 34.55% | 20.55% | 31.66% | 13.11% | 25.99% |
| Next Year Persistence | 34.13% | 38.47% | 6.49% | 18.50% | 37.06% | 37.84% | 0.00% | 0.00% |
| Avg. GPA | 3.08 | 2.90 | 3.05 | 2.90 | 3.55 | 3.04 | 3.43 | 2.85 |
| Avg. Units Enrolled | 4.8 | 6.7 | 3.2 | 5.5 | 3.0 | 5.1 | 3.6 | 5.5 |

STUDENTS

STUDENT OUTCOMES BY AGE GROUP

Spring 2008 and Spring 2011

| | Spring 2008 | All Spring 2008 | Spring 2009 | All Spring 2009 | Spring 2010 | All Spring 2010 | Spring 2011 | All Spring 2011 |
|----------------------------|----------------|--------------------|----------------|--------------------|----------------|--------------------|----------------|--------------------|
| 17 and Under | 5.59% | 2020 | 4.38% | 3013 | 3.21 % | 3,462 | 2.46 % | 4,021 |
| Course Retention Rate | 89.85% | 85.98% | 89.73% | 86.00% | 87.25% | 88.95 % | 86.72 % | 87.68 % |
| Course Success Rate | 68.53% | 70.03% | 54.75% | 69.34% | 75.96 % | 73.36 % | 67.19 % | 70.39 % |
| Transfer Ready Rate | 0.00% | 5.40% | 6.06% | 7.73% | 0.00 % | 1.85 % | 0.00 % | 1.44 % |
| Next Term Persistence Rate | 47.79% | 40.64% | 40.91% | 34.55% | 47.75 % | 31.66 % | 26.26 % | 25.99 % |
| Next Year Persistence Rate | 42.48% | 38.47% | 15.15% | 18.50% | 41.44 % | 37.84 % | 0.00 % | 0.00 % |
| Avg. GPA | 2.94 | 2.90 | 2.64 | 2.90 | 2.93 | 3.04 | 2.77 | 2.85 |
| Avg. Units Enrolled | 4.2 | 6.7 | 3.7 | 5.5 | 2.6 | 5.1 | 3.7 | 5.5 |
| 18-20 | 18.02% | 2020 | 15.00% | 3013 | 12.97 % | 3,462 | 11.84 % | 4,021 |
| Course Retention Rate | 87.50% | 85.98% | 85.09% | 86.00% | 84.81% | 88.95 % | 88.60 % | 87.68 % |
| Course Success Rate | 70.63% | 70.03% | 62.59% | 69.34% | 67.38 % | 73.36 % | 66.82 % | 70.39 % |
| Transfer Ready Rate | 5.77% | 5.40% | 20.13% | 7.73% | 4.45 % | 1.85 % | 3.78 % | 1.44 % |
| Next Term Persistence Rate | 42.03% | 40.64% | 50.22% | 34.55% | 47.44 % | 31.66 % | 36.13 % | 25.99 % |
| Next Year Persistence Rate | 38.46% | 38.47% | 17.70% | 18.50% | 39.20 % | 37.84 % | 0.00 % | 0.00 % |
| Avg. GPA | 2.69 | 2.90 | 2.60 | 2.90 | 2.45 | 3.04 | 2.37 | 2.85 |
| Avg. Units Enrolled | 10.8 | 6.7 | 10.5 | 5.5 | 10.1 | 5.1 | 10.4 | 5.5 |
| 21-24 | 12.38% | 2020 | 9.96% | 3013 | 11.27 % | 3,462 | 12.34 % | 4,021 |
| Course Retention Rate | 82.14% | 85.98% | 81.84% | 86.00% | 81.36% | 88.95 % | 84.21 % | 87.68 % |
| Course Success Rate | 64.03% | 70.03% | 62.88% | 69.34% | 69.98 % | 73.36 % | 64.21 % | 70.39 % |
| Transfer Ready Rate | 20.00% | 5.40% | 18.00% | 7.73% | 3.59 % | 1.85 % | 2.42 % | 1.44 % |
| Next Term Persistence Rate | 36.40% | 40.64% | 41.67% | 34.55% | 36.15 % | 31.66 % | 21.57 % | 25.99 % |
| Next Year Persistence Rate | 34.40% | 38.47% | 10.67% | 18.50% | 33.85 % | 37.84 % | 0.00 % | 0.00 % |
| Avg. GPA | 2.72 | 2.90 | 2.72 | 2.90 | 2.68 | 3.04 | 2.39 | 2.85 |
| Avg. Units Enrolled | 8.4 | 6.7 | 8.2 | 5.5 | 7.2 | 5.1 | 6.8 | 5.5 |
| 25-34 | 21.63% | 2020 | 20.25% | 3013 | 23.28 % | 3,462 | 26.04 % | 4,021 |
| Course Retention Rate | 84.05% | 85.98% | 83.82% | 86.00% | 83.40% | 88.95 % | 86.98 % | 87.68 % |
| Course Success Rate | 69.23% | 70.03% | 69.39% | 69.34% | 70.82 % | 73.36 % | 69.41 % | 70.39 % |
| Transfer Ready Rate | 5.49% | 5.40% | 6.72% | 7.73% | 1.36 % | 1.85 % | 1.91 % | 1.44 % |
| Next Term Persistence Rate | 40.05% | 40.64% | 38.85% | 34.55% | 29.40 % | 31.66 % | 22.45 % | 25.99 % |
| Next Year Persistence Rate | 36.16% | 38.47% | 12.30% | 18.50% | 31.64 % | 37.84 % | 0.00 % | 0.00 % |
| Avg. GPA | 3.00 | 2.90 | 3.05 | 2.90 | 2.79 | 3.04 | 2.64 | 2.85 |
| Avg. Units Enrolled | 7.6 | 6.7 | 6.3 | 5.5 | 5.5 | 5.1 | 5.4 | 5.5 |
| 35-49 | 23.47% | 2020 | 24.73% | 3013 | 27.09 % | 3,462 | 29.27 % | 4,021 |
| Course Retention Rate | 86.13% | 85.98% | 85.71% | 86.00% | 85.68% | 88.95 % | 87.27 % | 87.68 % |
| Course Success Rate | 71.47% | 70.03% | 73.06% | 69.34% | 75.60 % | 73.36 % | 71.42 % | 70.39 % |
| Transfer Ready Rate | 2.11% | 5.40% | 4.43% | 7.73% | 1.81 % | 1.85 % | 0.34 % | 1.44 % |
| Next Term Persistence Rate | 36.50% | 40.64% | 30.47% | 34.55% | 31.24 % | 31.66 % | 32.29 % | 25.99 % |
| Next Year Persistence Rate | 38.82% | 38.47% | 11.41% | 18.50% | 38.38 % | 37.84 % | 0.00 % | 0.00 % |
| Avg. GPA | 3.06 | 2.90 | 3.10 | 2.90 | 3.13 | 3.04 | 2.96 | 2.85 |
| Avg. Units Enrolled | 5.9 | 6.7 | 4.7 | 5.5 | 4.3 | 5.1 | 5.0 | 5.5 |
| 50 and over | 18.91% | 2020 | 25.32% | 3013 | 22.18 % | 3,462 | 18.06 % | 4,021 |
| Course Retention Rate | 89.57% | 85.98% | 94.49% | 86.00% | 94.51% | 88.95 % | 92.90 % | 87.68 % |
| Course Success Rate | 76.16% | 70.03% | 85.47% | 69.34% | 87.19 % | 73.36 % | 84.39 % | 70.39 % |
| Transfer Ready Rate | 1.05% | 5.40% | 79.00% | 7.73% | 0.26 % | 1.85 % | 0.55 % | 1.44 % |
| Next Term Persistence Rate | 45.81% | 40.64% | 22.28% | 34.55% | 20.70 % | 31.66 % | 17.22 % | 25.99 % |
| Next Year Persistence Rate | 42.15% | 38.47% | 4.06% | 18.50% | 44.40 % | 37.84 % | 0.00 % | 0.00 % |
| Avg. GPA | 3.43 | 2.90 | 3.44 | 2.90 | 3.68 | 3.04 | 3.55 | 2.85 |
| Avg. Units Enrolled | 2.6 | 6.7 | 1.8 | 5.5 | 2.1 | 5.1 | 2.6 | 5.5 |

STUDENTS

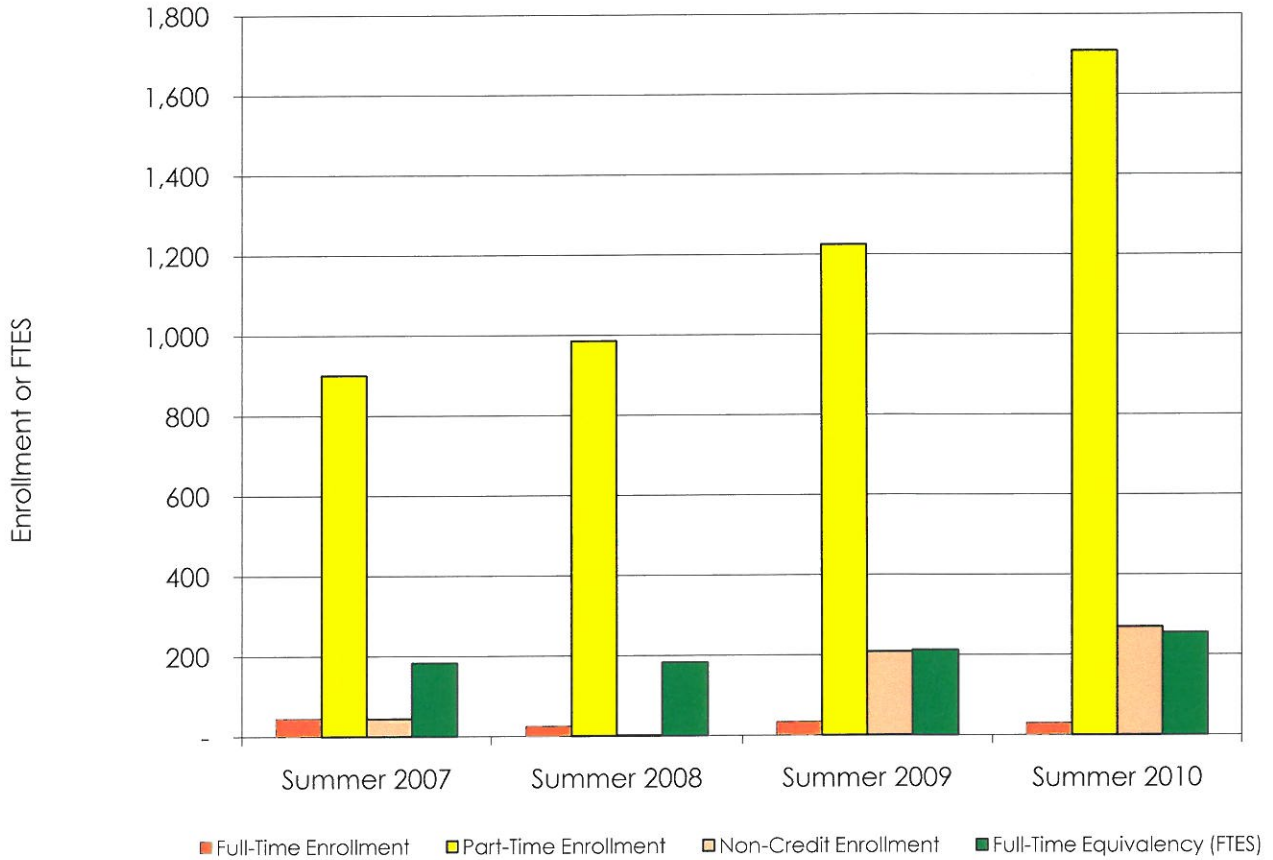
STUDENT OUTCOMES BY ENROLLMENT STATUS Spring 2008 and Spring 2011

| | Spring 2008 | All Spring 2008 | Spring 2009 | All Spring 2009 | Spring 2010 | All Spring 2010 | Spring 2011 | All Spring 2011 |
|----------------------------|---------------|--------------------|---------------|--------------------|----------------|--------------------|----------------|--------------------|
| CONTINUING | 49.60% | 2020 | 39.43% | 3013 | 37.06% | 3,462 | 39.02% | 4,021 |
| Course Retention Rate | 87.96% | 85.98% | 85.26% | 86.00% | 85.05% | 88.95% | 87.48% | 87.68% |
| Course Success Rate | 72.93% | 70.03% | 68.33% | 69.34% | 71.38% | 73.36% | 69.75% | 70.39% |
| Transfer Ready Rate | 8.28% | 5.40% | 15.07% | 7.73% | 3.35% | 1.85% | 2.61% | 1.44% |
| Next Term Persistence Rate | 55.39% | 40.64% | 58.92% | 34.55% | 55.42% | 31.66% | 45.25% | 25.99% |
| Next Year Persistence Rate | 48.10% | 38.47% | 20.03% | 18.50% | 47.08% | 37.84% | 0.00% | 0.00% |
| Avg. GPA | 2.92 | 2.90 | 2.87 | 2.90 | 2.69 | 3.04 | 2.65 | 2.85 |
| Avg. Units Enrolled | 8.5 | 6.7 | 9.4 | 5.5 | 8.9 | 5.1 | 8.7 | 5.5 |
| K-12 | 3.61% | 2020 | 3.42% | 3013 | 2.54% | 3,462 | 2.29% | 4,021 |
| Course Retention Rate | 91.49% | 85.98% | 88.89% | 86.00% | 85.60% | 88.95% | 95.89% | 87.68% |
| Course Success Rate | 64.89% | 70.03% | 47.95% | 69.34% | 80.82% | 73.36% | 71.23% | 70.39% |
| Transfer Ready Rate | 0.00% | 5.40% | 11.65% | 7.73% | 0.00% | 1.85% | 0.00% | 1.44% |
| Next Term Persistence Rate | 26.03% | 40.64% | 31.07% | 34.55% | 40.91% | 31.66% | 22.83% | 25.99% |
| Next Year Persistence Rate | 20.55% | 38.47% | 6.80% | 18.50% | 37.50% | 37.84% | 0.00% | 0.00% |
| Avg. GPA | 3.06 | 2.90 | 2.44 | 2.90 | 3.08 | 3.04 | 2.90 | 2.85 |
| Avg. Units Enrolled | 2.7 | 6.7 | 2.7 | 5.5 | 2.2 | 5.1 | 2.2 | 5.5 |
| NEW | 20.59% | 2020 | 29.87% | 3013 | 32.38% | 3,462 | 35.12% | 4,021 |
| Course Retention Rate | 81.91% | 85.98% | 86.31% | 86.00% | 85.69% | 88.95% | 86.86% | 87.68% |
| Course Success Rate | 64.56% | 70.03% | 71.42% | 69.34% | 70.98% | 73.36% | 68.75% | 70.39% |
| Transfer Ready Rate | 0.00% | 5.40% | 0.00% | 7.73% | 0.00% | 1.85% | 0.00% | 1.44% |
| Next Term Persistence Rate | 28.13% | 40.64% | 16.22% | 34.55% | 21.32% | 31.66% | 16.36% | 25.99% |
| Next Year Persistence Rate | 27.88% | 38.47% | 5.00% | 18.50% | 25.87% | 37.84% | 0.00% | 0.00% |
| Avg. GPA | 2.90 | 2.90 | 3.02 | 2.90 | 2.92 | 3.04 | 2.61 | 2.85 |
| Avg. Units Enrolled | 5.9 | 6.7 | 2.7 | 5.5 | 3.5 | 5.1 | 3.9 | 5.5 |
| RETURNING | 26.19% | 2020 | 27.28% | 3013 | 28.02% | 3,462 | 23.58% | 4,021 |
| Course Retention Rate | 82.32% | 85.98% | 87.85% | 86.00% | 87.69% | 88.95% | 89.20% | 87.68% |
| Course Success Rate | 65.46% | 70.03% | 73.35% | 69.34% | 82.58% | 73.36% | 75.16% | 70.39% |
| Transfer Ready Rate | 4.91% | 5.40% | 5.11% | 7.73% | 2.16% | 1.85% | 1.79% | 1.44% |
| Next Term Persistence Rate | 24.57% | 40.64% | 19.83% | 34.55% | 11.34% | 31.66% | 8.76% | 25.99% |
| Next Year Persistence Rate | 31.00% | 38.47% | 4.14% | 18.50% | 39.48% | 37.84% | 0.00% | 0.00% |
| Avg. GPA | 2.85 | 2.90 | 2.97 | 2.90 | 3.59 | 3.04 | 3.35 | 2.85 |
| Avg. Units Enrolled | 4.6 | 6.7 | 3.1 | 5.5 | 2.3 | 5.1 | 2.8 | 5.5 |

STUDENTS

TOTAL ENROLLMENT: FULL-TIME, PART-TIME, NON-CREDIT AND FTES

Summer 2007 to Summer 2010



| | Full-Time Enrollment | % | Part-Time Enrollment | % | Non-Credit Enrollment | Total Enrollment | Full-Time Equivalency (FTES) |
|-------------|----------------------|-------|----------------------|--------|-----------------------|------------------|------------------------------|
| Summer 2007 | 45 | 4.55% | 901 | 91.01% | 44 | 990 | 183 |
| Summer 2008 | 25 | 2.47% | 986 | 97.33% | 2 | 1,013 | 183 |
| Summer 2009 | 34 | 2.32% | 1,225 | 83.50% | 208 | 1,467 | 212 |
| Summer 2010 | 30 | 1.49% | 1,709 | 85.07% | 270 | 2,009 | 255 |

STUDENTS

STUDENT OUTCOMES BY GENDER Summer 2007 to Summer 2010

| | Summer 2007 | All Summer 2007 | Summer 2008 | All Summer 2008 | Summer 2009 | All Summer 2009 | Summer 2010 | All Summer 2010 |
|----------------------------|----------------|--------------------|----------------|--------------------|----------------|--------------------|----------------|--------------------|
| FEMALE | 40.10% | 990 | 33.07% | 1013 | 31.79% | 1469 | 76.75 % | 2,009 |
| Course Retention Rate | 93.91% | 94.50% | 92.24% | 93.54% | 91.68% | 87.02% | 91.02 % | 90.39 % |
| Course Success Rate | 76.72% | 82.34% | 77.41% | 82.48% | 60.75% | 65.43% | 79.58 % | 78.78 % |
| Transfer Ready Rate | 2.27% | 1.92% | 4.78% | 1.88% | 4.50% | 2.04% | 0.19 % | 0.60 % |
| Next Term Persistence Rate | 62.97% | 56.87% | 65.37% | 52.91% | 68.31% | 61.54% | 47.73 % | 53.51 % |
| Next Year Persistence Rate | 22.17% | 26.57% | 22.99% | 26.46% | NA | NA | 23.87 % | 23.49 % |
| Avg. GPA | 3.10 | 3.19 | 2.97 | 3.08 | 2.87 | 2.89 | 2.94 | 2.92 |
| Avg. Units Enrolled | 4.1 | 4.1 | 4.8 | 4.1 | 3.4 | 3.5 | 3.3 | 3.2 |
| MALE | 59.70% | 990 | 66.63% | 1013 | 67.26% | 1469 | 23.25 % | 2,009 |
| Course Retention Rate | 95.10% | 94.50% | 94.18% | 93.54% | 84.81% | 87.02% | 88.16 % | 90.39 % |
| Course Success Rate | 85.83% | 82.34% | 84.98% | 82.48% | 67.61% | 65.43% | 75.96 % | 78.78 % |
| Transfer Ready Rate | 1.69% | 1.92% | 44.00% | 1.88% | 91.00% | 2.04% | 1.93 % | 0.60 % |
| Next Term Persistence Rate | 52.79% | 56.87% | 46.96% | 52.91% | 58.20% | 61.54% | 72.59 % | 53.51 % |
| Next Year Persistence Rate | 29.61% | 26.57% | 28.30% | 26.46% | NA | NA | 22.27 % | 23.49 % |
| Avg. GPA | 3.26 | 3.19 | 3.15 | 3.08 | 2.90 | 2.89 | 2.86 | 2.92 |
| Avg. Units Enrolled | 4.0 | 4.1 | 3.8 | 4.1 | 3.5 | 3.5 | 3.1 | 3.2 |

STUDENTS

STUDENT OUTCOMES BY AGE GROUP Summer 2007 to Summer 2010

| | Summer 2007 | All Summer 2007 | Summer 2008 | All Summer 2008 | Summer 2009 | All Summer 2009 | Summer 2010 | All Summer 2010 |
|----------------------------|----------------|--------------------|----------------|--------------------|----------------|--------------------|----------------|--------------------|
| 17 and Under | 4.65% | 990 | 3.65% | 1013 | 6.26% | 1469 | 3.33% | 2,009 |
| Course Retention Rate | 94.81% | 94.50% | 85.94% | 93.54% | 94.21% | 87.02% | 86.54% | 90.39% |
| Course Success Rate | 86.61% | 82.34% | 68.75% | 82.48% | 48.76% | 65.43% | 71.15% | 78.78% |
| Transfer Ready Rate | 0.00% | 1.92% | 0.00% | 1.88% | 0.00% | 2.04% | 0.00% | 0.60% |
| Next Term Persistence Rate | 54.35% | 56.87% | 54.05% | 52.91% | 63.04% | 61.54% | 64.18% | 53.51% |
| Next Year Persistence Rate | 19.57% | 26.57% | 24.34% | 26.46% | NA | NA | 17.91% | 23.49% |
| Avg. GPA | 3.35 | 3.19 | 2.55 | 3.08 | 2.64 | 2.89 | 3.12 | 2.92 |
| Avg. Units Enrolled | 3.6 | 4.1 | 4.5 | 4.1 | 2.2 | 3.5 | 2.0 | 3.2 |
| 18-20 | 11.82% | 990 | 12.44% | 1013 | 15.72% | 1469 | 14.09% | 2,009 |
| Course Retention Rate | 91.07% | 94.50% | 93.27% | 93.54% | 90.16% | 87.02% | 86.48% | 90.39% |
| Course Success Rate | 78.57% | 82.34% | 75.78% | 82.48% | 48.36% | 65.43% | 70.90% | 78.78% |
| Transfer Ready Rate | 3.42% | 1.92% | 0.00% | 1.88% | 2.60% | 2.04% | 0.35% | 0.60% |
| Next Term Persistence Rate | 68.38% | 56.87% | 53.97% | 52.91% | 71.00% | 61.54% | 76.33% | 53.51% |
| Next Year Persistence Rate | 19.66% | 26.57% | 15.08% | 26.46% | NA | NA | 18.37% | 23.49% |
| Avg. GPA | 2.98 | 3.19 | 2.78 | 3.08 | 2.47 | 2.89 | 2.59 | 2.92 |
| Avg. Units Enrolled | 4.7 | 4.1 | 5.2 | 4.1 | 3.0 | 3.5 | 2.3 | 3.2 |
| 21-24 | 10.10% | 990 | 9.87% | 1013 | 10.14% | 1469 | 11.50% | 2,009 |
| Course Retention Rate | 95.29% | 94.50% | 93.40% | 93.54% | 87.50% | 87.02% | 87.58% | 90.39% |
| Course Success Rate | 78.01% | 82.34% | 81.73% | 82.48% | 61.40% | 65.43% | 73.15% | 78.78% |
| Transfer Ready Rate | 5.00% | 1.92% | 5.00% | 1.88% | 1.34% | 2.04% | 1.73% | 0.60% |
| Next Term Persistence Rate | 66.00% | 56.87% | 57.00% | 52.91% | 75.17% | 61.54% | 57.14% | 53.51% |
| Next Year Persistence Rate | 22.00% | 26.57% | 15.00% | 26.46% | NA | NA | 15.58% | 23.49% |
| Avg. GPA | 2.96 | 3.19 | 3.10 | 3.08 | 2.86 | 2.89 | 2.61 | 2.92 |
| Avg. Units Enrolled | 5.3 | 4.1 | 4.7 | 4.1 | 4.0 | 3.5 | 3.5 | 3.2 |
| 25-34 | 21.92% | 990 | 24.58% | 1013 | 22.53% | 1469 | 29.17% | 2,009 |
| Course Retention Rate | 94.78% | 94.50% | 93.18% | 93.54% | 82.18% | 87.02% | 89.95% | 90.39% |
| Course Success Rate | 85.59% | 82.34% | 80.17% | 82.48% | 65.05% | 65.43% | 77.25% | 78.78% |
| Transfer Ready Rate | 3.23% | 1.92% | 3.61% | 1.88% | 1.51% | 2.04% | 0.34% | 0.60% |
| Next Term Persistence Rate | 68.66% | 56.87% | 63.86% | 52.91% | 65.56% | 61.54% | 43.69% | 53.51% |
| Next Year Persistence Rate | 30.41% | 26.57% | 27.31% | 26.46% | NA | NA | 20.99% | 23.49% |
| Avg. GPA | 3.22 | 3.19 | 3.05 | 3.08 | 2.91 | 2.89 | 2.90 | 2.92 |
| Avg. Units Enrolled | 5.1 | 4.1 | 5.0 | 4.1 | 4.3 | 3.5 | 3.5 | 3.2 |
| 35-49 | 23.94% | 990 | 28.23% | 1013 | 27.09% | 1469 | 29.57% | 2,009 |
| Course Retention Rate | 92.53% | 94.50% | 91.87% | 93.54% | 84.14% | 87.02% | 91.35% | 90.39% |
| Course Success Rate | 80.54% | 82.34% | 81.98% | 82.48% | 69.36% | 65.43% | 80.28% | 78.78% |
| Transfer Ready Rate | 1.27% | 1.92% | 1.05% | 1.88% | 4.27% | 2.04% | 0.51% | 0.60% |
| Next Term Persistence Rate | 54.43% | 56.87% | 52.10% | 52.91% | 64.07% | 61.54% | 53.54% | 53.51% |
| Next Year Persistence Rate | 28.69% | 26.57% | 27.97% | 26.46% | NA | NA | 28.79% | 23.49% |
| Avg. GPA | 3.25 | 3.19 | 3.24 | 3.08 | 3.05 | 2.89 | 2.99 | 2.92 |
| Avg. Units Enrolled | 4.7 | 4.1 | 3.9 | 4.1 | 3.9 | 3.5 | 3.6 | 3.2 |
| 50 and over | 27.47% | 990 | 21.13% | 1013 | 18.04% | 1469 | 12.29% | 2,009 |
| Course Retention Rate | 97.79% | 94.50% | 98.77% | 93.54% | 93.30% | 87.02% | 94.74% | 90.39% |
| Course Success Rate | 86.73% | 82.34% | 94.77% | 82.48% | 83.51% | 65.43% | 89.75% | 78.78% |
| Transfer Ready Rate | 0.00% | 1.92% | 93.00% | 1.88% | 0.00% | 2.04% | 0.81% | 0.60% |
| Next Term Persistence Rate | 41.91% | 56.87% | 38.79% | 52.91% | 36.60% | 61.54% | 44.53% | 53.51% |
| Next Year Persistence Rate | 27.57% | 26.57% | 35.98% | 26.46% | NA | NA | 31.58% | 23.49% |
| Avg. GPA | 3.50 | 3.19 | 3.54 | 3.08 | 3.14 | 2.89 | 3.26 | 2.92 |
| Avg. Units Enrolled | 2.0 | 4.1 | 2.4 | 4.1 | 2.3 | 3.5 | 2.6 | 3.2 |

STUDENTS

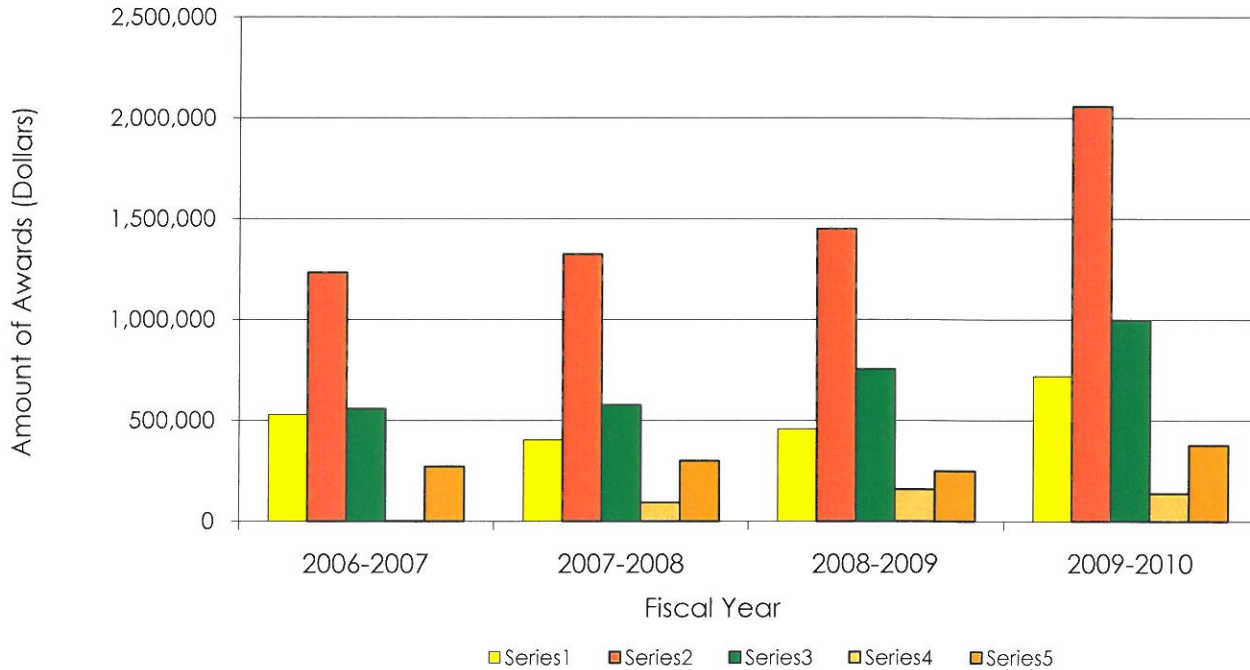
STUDENT OUTCOMES BY ENROLLMENT STATUS Summer 2007 to Summer 2010

| | Summer 2007 | All Summer 2007 | Summer 2008 | All Summer 2008 | Summer 2009 | All Summer 2009 | Summer 2010 | All Summer 2010 |
|----------------------------|------------------------|----------------------------|------------------------|----------------------------|------------------------|----------------------------|------------------------|----------------------------|
| CONTINUING | 43.74% | 990 | 50.84% | 1013 | 36.83% | 1469 | 36.29% | 2,009 |
| Course Retention Rate | 92.55% | 94.50% | 91.76% | 93.54% | 88.69% | 87.02% | 86.13% | 90.39% |
| Course Success Rate | 80.41% | 82.34% | 80.04% | 82.48% | 75.44% | 65.43% | 75.06% | 78.78% |
| Transfer Ready Rate | 3.23% | 1.92% | 1.36% | 1.88% | 3.70% | 2.04% | 0.96% | 0.60% |
| Next Term Persistence Rate | 78.52% | 56.87% | 73.79% | 52.91% | 83.18% | 61.54% | 81.21% | 53.51% |
| Next Year Persistence Rate | 33.26% | 26.57% | 30.87% | 26.46% | NA | NA | 38.68% | 23.49% |
| Avg. GPA | 3.18 | 3.19 | 3.10 | 3.08 | 3.05 | 2.89 | 2.95 | 2.92 |
| Avg. Units Enrolled | 5.3 | 4.1 | 4.9 | 4.1 | 5.0 | 3.5 | 4.6 | 3.2 |
| K-12 | 1.92% | 990 | 1.28% | 1013 | 3.20% | 1469 | 1.54% | 2,009 |
| Course Retention Rate | 100.00% | 94.50% | 100.00% | 93.54% | 96.55% | 87.02% | 84.21% | 90.39% |
| Course Success Rate | 92.31% | 82.34% | 77.27% | 82.48% | 62.07% | 65.43% | 71.05% | 78.78% |
| Transfer Ready Rate | 0.00% | 1.92% | 0.00% | 1.88% | 0.00% | 2.04% | 0.00% | 0.60% |
| Next Term Persistence Rate | 26.32% | 56.87% | 38.46% | 52.91% | 34.04% | 61.54% | 38.71% | 53.51% |
| Next Year Persistence Rate | 10.53% | 26.57% | 7.69% | 26.46% | NA | NA | 19.35% | 23.49% |
| Avg. GPA | 3.05 | 3.19 | 2.63 | 3.08 | 2.33 | 2.89 | 3.32 | 2.92 |
| Avg. Units Enrolled | 2.8 | 4.1 | 4.8 | 4.1 | 2.5 | 3.5 | 3.1 | 3.2 |
| NEW | 27.88% | 990 | 24.78% | 1013 | 38.19% | 1469 | 50.27% | 2,009 |
| Course Retention Rate | 96.58% | 94.50% | 95.17% | 93.54% | 79.81% | 87.02% | 95.77% | 90.39% |
| Course Success Rate | 88.58% | 82.34% | 85.02% | 82.48% | 48.42% | 65.43% | 82.41% | 78.78% |
| Transfer Ready Rate | 0.00% | 1.92% | 0.00% | 1.88% | 0.00% | 2.04% | 0.00% | 0.60% |
| Next Term Persistence Rate | 44.20% | 56.87% | 37.45% | 52.91% | 57.75% | 61.54% | 38.42% | 53.51% |
| Next Year Persistence Rate | 20.29% | 26.57% | 19.12% | 26.46% | NA | NA | 12.67% | 23.49% |
| Avg. GPA | 3.37 | 3.19 | 3.05 | 3.08 | 2.59 | 2.89 | 2.75 | 2.92 |
| Avg. Units Enrolled | 3.3 | 4.1 | 3.5 | 4.1 | 2.7 | 3.5 | 2.5 | 3.2 |
| RETURNING | 26.46% | 990 | 23.10% | 1013 | 21.78% | 1469 | 11.85% | 2,009 |
| Course Retention Rate | 96.07% | 94.50% | 96.02% | 93.54% | 94.85% | 87.02% | 92.47% | 90.39% |
| Course Success Rate | 79.12% | 82.34% | 86.36% | 82.48% | 73.82% | 65.43% | 84.25% | 78.78% |
| Transfer Ready Rate | 1.91% | 1.92% | 5.13% | 1.88% | 3.13% | 2.04% | 2.10% | 0.60% |
| Next Term Persistence Rate | 36.64% | 56.87% | 24.36% | 52.91% | 35.63% | 61.54% | 34.45% | 53.51% |
| Next Year Persistence Rate | 23.28% | 26.57% | 25.64% | 26.46% | NA | NA | 23.53% | 23.49% |
| Avg. GPA | 3.02 | 3.19 | 3.13 | 3.08 | 2.93 | 2.89 | 3.17 | 2.92 |
| Avg. Units Enrolled | 3.0 | 4.1 | 3.0 | 4.1 | 2.4 | 3.5 | 2.3 | 3.2 |

STUDENTS

STUDENT FINANCIAL AID

Fiscal Year 2003-2004 to 2009-2010



Amount of Awards (Dollars)

| | BOGW | Grants | Loans | Scholarships | Workstudy | Total | Yearly Percent Change in Total Award Amount |
|-----------|---------|-----------|---------|--------------|-----------|-----------|---|
| 2003-2004 | 285,987 | 1,282,256 | 501,195 | 9,877 | 385,180 | 2,464,495 | |
| 2004-2005 | 414,785 | 1,488,190 | 570,482 | 29,913 | 405,617 | 2,908,987 | 18.0% |
| 2005-2006 | 521,760 | 1,257,224 | 573,152 | 0 | 271,721 | 2,623,857 | -9.8% |
| 2006-2007 | 528,693 | 1,232,800 | 557,327 | 2,250 | 270,543 | 2,591,613 | -1.2% |
| 2007-2008 | 403,062 | 1,323,511 | 575,454 | 92,289 | 299,125 | 2,693,441 | 3.9% |
| 2008-2009 | 457,175 | 1,450,315 | 754,023 | 159,162 | 248,913 | 3,069,588 | 14.0% |
| 2009-2010 | 718,419 | 2,056,750 | 996,859 | 137,735 | 377,060 | 4,286,823 | 34.95% |

Number of Awards (Duplicated Headcount)

| | BOGW | Grants | Loans | Scholarships | Workstudy | Total | Yearly Percent Change in Total Awards |
|-----------|-------|--------|-------|--------------|-----------|-------|---------------------------------------|
| 2003-2004 | 1,119 | 800 | 179 | 10 | 184 | 2,292 | |
| 2004-2005 | 1,071 | 912 | 317 | 26 | 204 | 2,530 | 10.4% |
| 2005-2006 | 1,285 | 661 | 321 | 0 | 150 | 2,417 | -4.5% |
| 2006-2007 | 1,482 | 732 | 277 | 2 | 145 | 2,638 | 9.1% |
| 2007-2008 | 1,542 | 686 | 200 | 163 | 138 | 2,729 | 3.4% |
| 2008-2009 | 1,712 | 654 | 256 | 231 | 144 | 2,997 | 9.8% |
| 2009-2010 | 2541 | 773 | 340 | 204 | 172 | 4,030 | 30.55% |

STUDENTS

ENROLLMENT FEES/TUITION BY RESIDENCE STATUS

1996-1998 To 2010-2011

| | California Residents Enrollment Fee Per Unit | Non-Resident Tuition Per Unit Including Enrollment Fee* | Nevada Resident Good Neighbor Policy Fees Per Unit |
|-----------|---|---|---|
| 1996-1998 | \$13 | \$140 | \$42 |
| 1998-2000 | \$13 | \$144 | \$42 |
| 2000-2002 | \$11 | \$158 | \$42 |
| 2002-2004 | \$11 | \$164 | \$42 |
| 2004-2006 | \$18 | \$201 | \$42 |
| 2006-2007 | \$26 | \$209 | \$42 |
| 2007-2008 | \$20 | \$203 | \$42 |
| 2008-2009 | \$20 | \$203 | \$42 |
| 2009-2010 | \$26 | \$216 | \$42 |
| 2010-2011 | \$26 | \$216 | \$42 |

*See LCCD catalog for Non-Resident Fee Exemption AB540

STUDENTS

ENROLLMENT BY TERM: STATUS

Summer 2007 to Spring 2011

| | Continuing | K-12 | First-time Student | Returning | First-time Transfer | Total |
|--------------------|------------|------|--------------------|-----------|---------------------|-------|
| Summer 2007 | 420 | 18 | 206 | 260 | 85 | 989 |
| % | 42.5% | 1.8% | 20.8% | 26.3% | 8.6% | 100% |
| Fall 2007 | 764 | 75 | 485 | 474 | 136 | 1,934 |
| % | 39.5% | 3.9% | 25.1% | 24.5% | 7.0% | 100% |
| Spring 2008 | 995 | 71 | 269 | 521 | 157 | 2,013 |
| % | 49.4% | 3.5% | 13.4% | 25.9% | 7.8% | 100% |
| Summer 2008 | 515 | 13 | 149 | 226 | 108 | 1,011 |
| % | 50.9% | 1.3% | 14.7% | 22.4% | 10.7% | 100% |
| Fall 2008 | 786 | 49 | 454 | 399 | 163 | 1,851 |
| % | 42.5% | 2.6% | 24.5% | 21.6% | 8.8% | 100% |
| Spring 2009 | 1,187 | 104 | 696 | 803 | 219 | 3,009 |
| % | 39.4% | 3.5% | 23.1% | 26.7% | 7.3% | 100% |
| Summer 2009 | 539 | 47 | 367 | 310 | 202 | 1,465 |
| % | 36.8% | 3.2% | 25.1% | 21.2% | 13.8% | 100% |
| Fall 2009 | 964 | 83 | 668 | 401 | 225 | 2,341 |
| % | 41.2% | 3.5% | 28.5% | 17.1% | 9.6% | 100% |
| Spring 2010 | 1,283 | 88 | 799 | 970 | 322 | 3,462 |
| % | 37.1% | 2.5% | 23.1% | 28.0% | 9.3% | 100% |
| Summer 2010 | 729 | 31 | 732 | 238 | 278 | 2,008 |
| % | 36.3% | 1.5% | 36.5% | 11.9% | 13.8% | 100% |
| Fall 2010 | 1,082 | 55 | 1,198 | 358 | 336 | 3,029 |
| % | 35.7% | 1.8% | 39.6% | 11.8% | 11.1% | 100% |
| Spring 2011 | 1,569 | 92 | 1,015 | 948 | 397 | 4,021 |
| % | 39.0% | 2.3% | 25.2% | 23.6% | 9.9% | 100% |

STUDENTS

ENROLLMENT BY TERM: RESIDENT STATUS

Summer 2007 to Spring 2011

| | California Resident | Nevada Good Neighbor | Out-of-State Residents | International | 540 | Total |
|--------------------|---------------------|----------------------|------------------------|---------------|------|-------|
| Summer 2007 | 914 | 45 | 25 | 1 | 5 | 990 |
| % | 92.3% | 4.5% | 2.5% | 0.1% | 0.5% | 100% |
| Fall 2007 | 1,803 | 82 | 38 | 10 | 6 | 1,939 |
| % | 93.0% | 4.2% | 2.0% | 0.5% | 0.3% | 100% |
| Spring 2008 | 1,896 | 72 | 38 | 8 | 6 | 2,020 |
| % | 93.9% | 3.6% | 1.9% | 0.4% | 0.3% | 100% |
| Summer 2008 | 941 | 41 | 19 | 5 | 7 | 1,013 |
| % | 92.9% | 4.0% | 1.9% | 0.5% | 0.7% | 100% |
| Fall 2008 | 1,710 | 88 | 35 | 7 | 17 | 1,857 |
| % | 92.1% | 4.7% | 1.9% | 0.4% | 0.9% | 100% |
| Spring 2009 | 2,825 | 91 | 51 | 10 | 36 | 3,013 |
| % | 93.8% | 3.0% | 1.7% | 0.3% | 1.2% | 100% |
| Summer 2009 | 1,369 | 45 | 32 | 2 | 21 | 1,469 |
| % | 93.2% | 3.1% | 2.2% | 0.1% | 1.4% | 100% |
| Fall 2009 | 2,222 | 69 | 24 | 6 | 20 | 2,341 |
| % | 94.9% | 2.9% | 1.0% | 0.3% | 0.9% | 100% |
| Spring 2010 | 3,295 | 70 | 43 | 3 | 34 | 3,445 |
| % | 95.6% | 2.0% | 1.2% | 0.1% | 1.0% | 100% |
| Summer 2010 | 1,837 | 98 | 52 | 5 | 14 | 2,006 |
| % | 91.6% | 4.9% | 2.6% | 0.2% | 0.7% | 100% |
| Fall 2010 | 2,822 | 129 | 46 | 13 | 18 | 3,028 |
| % | 93.2% | 4.3% | 1.5% | 0.4% | 0.6% | 100% |
| Spring 2011 | 3,800 | 111 | 77 | 12 | 21 | 4,021 |
| % | 94.5% | 2.8% | 1.9% | 0.3% | 0.5% | 100% |

STUDENTS

ENROLLMENT BY TERM: GENDER

Summer 2007 to Spring 2011

| | Female | Male | Unknown | Total |
|--------------------|--------|-------|---------|-------|
| Summer 2007 | 397 | 591 | 2 | 990 |
| % | 40.1% | 59.7% | 0.2% | 100% |
| Fall 2007 | 924 | 1,010 | 5 | 1,939 |
| % | 47.7% | 52.1% | 0.3% | 100% |
| Spring 2008 | 933 | 1,086 | 1 | 2,020 |
| % | 46.2% | 53.8% | 0.0% | 100% |
| Summer 2008 | 335 | 675 | 3 | 1,013 |
| % | 33.1% | 66.6% | 0.3% | 100% |
| Fall 2008 | 903 | 954 | | 1,857 |
| % | 48.6% | 51.4% | | 100% |
| Spring 2009 | 1,064 | 1,932 | 17 | 3,013 |
| % | 35.3% | 64.1% | 0.6% | 100% |
| Summer 2009 | 467 | 988 | 14 | 1,469 |
| % | 31.8% | 67.3% | 1.0% | 100% |
| Fall 2009 | 915 | 1,414 | 16 | 2,345 |
| % | 39.0% | 60.3% | 0.7% | 100% |
| Spring 2010 | 1,025 | 2,435 | 2 | 3,462 |
| % | 29.6% | 70.3% | 0.1% | 100% |
| Summer 2010 | 467 | 1,542 | | 2,009 |
| % | 23.2% | 76.8% | | 100% |
| Fall 2010 | 922 | 2,107 | | 3,029 |
| % | 30.4% | 69.6% | | 100% |
| Spring 2011 | 1,019 | 3,002 | | 4,021 |
| % | 25.3% | 74.7% | | 100% |

STUDENTS

ENROLLMENT BY TERM: ETHNICITY

Summer 2007 to Spring 2011

| | African American | American Indian/ Alaskan Native | Asian | Hispanic | Other Non- White | Pacific Islander | White Non- Hispanic | Unknown | Total |
|--------------------|---------------------|--|-------|----------|---------------------|---------------------|------------------------|---------|-------|
| Summer 2007 | 67 | 32 | 20 | 126 | 2 | 22 | 663 | 58 | 990 |
| % | 6.8% | 3.2% | 2.0% | 12.7% | 0.2% | 2.2% | 67.0% | 5.9% | 100% |
| Fall 2007 | 151 | 80 | 32 | 238 | 13 | 33 | 1,319 | 73 | 1,939 |
| % | 7.8% | 4.1% | 1.7% | 12.3% | 0.7% | 1.7% | 68.0% | 3.8% | 100% |
| Spring 2008 | 115 | 75 | 28 | 222 | 18 | 42 | 1,438 | 82 | 2,020 |
| % | 5.7% | 3.7% | 1.4% | 11.0% | 0.9% | 2.1% | 71.2% | 4.1% | 100% |
| Summer 2008 | 78 | 38 | 18 | 126 | 8 | 12 | 689 | 44 | 1,013 |
| % | 7.7% | 3.8% | 1.8% | 12.4% | 0.8% | 1.2% | 68.0% | 4.3% | 100% |
| Fall 2008 | 114 | 80 | 25 | 237 | 21 | 41 | 1,281 | 58 | 1,857 |
| % | 6.1% | 4.3% | 1.3% | 12.8% | 1.1% | 2.2% | 69.0% | 3.1% | 100% |
| Spring 2009 | 120 | 94 | 28 | 322 | 26 | 46 | 2,242 | 135 | 3,013 |
| % | 4.0% | 3.1% | 0.9% | 10.7% | 0.9% | 1.5% | 74.4% | 4.5% | 100% |
| Summer 2009 | 129 | 42 | 22 | 197 | 4 | 21 | 1,003 | 51 | 1,469 |
| % | 8.8% | 2.9% | 1.5% | 13.4% | 0.3% | 1.4% | 68.3% | 3.5% | 100% |
| Fall 2009 | 246 | 92 | 35 | 320 | 12 | 33 | 1,529 | 78 | 2,345 |
| % | 10.5% | 3.9% | 1.5% | 13.6% | 0.5% | 1.4% | 65.2% | 3.3% | 100% |
| Spring 2010 | 390 | 118 | 61 | 330 | 330 | 35 | 2,096 | 102 | 3,462 |
| % | 11.3% | 3.4% | 1.8% | 9.5% | 9.5% | 1.0% | 60.5% | 2.9% | 100% |
| Summer 2010 | 365 | 87 | 61 | 211 | 146 | 17 | 972 | 150 | 2,009 |
| % | 18.2% | 4.3% | 3.0% | 10.5% | 7.3% | 0.8% | 48.4% | 7.5% | 100% |
| Fall 2010 | 551 | 115 | 74 | 488 | 200 | 37 | 1,488 | 76 | 3,029 |
| % | 18.2% | 3.8% | 2.4% | 16.1% | 6.6% | 1.2% | 49.1% | 2.5% | 100% |
| Spring 2011 | 650 | 125 | 104 | 576 | 255 | 38 | 2,185 | 88 | 4,021 |
| % | 16.2% | 3.1% | 2.6% | 14.3% | 6.3% | 0.9% | 54.3% | 2.2% | 100% |

STUDENTS

ENROLLMENT BY TERM: AGE GROUP, AVERAGE AGE

Summer 2007 to Spring 2011

| | 17 and Under | 18-20 | 21-24 | 25-34 | 35-49 | 50 and Over | Unknown | Total | Average Age |
|--------------------|--------------|-------|-------|-------|-------|-------------|---------|-------|--------------------|
| Summer 2007 | 46 | 117 | 100 | 217 | 237 | 272 | 1 | 990 | 38.61 years |
| % | 4.6% | 11.8% | 10.1% | 21.9% | 23.9% | 27.5% | <0.05% | 100% | |
| Fall 2007 | 151 | 363 | 207 | 404 | 453 | 361 | - | 1,939 | 34.54 years |
| % | 7.8% | 18.7% | 10.7% | 20.8% | 23.4% | 18.6% | <0.05% | 100% | |
| Spring 2008 | 113 | 364 | 250 | 437 | 474 | 382 | - | 2,020 | 34.65 years |
| % | 5.6% | 18.0% | 12.4% | 21.6% | 23.5% | 18.9% | <0.05% | 100% | |
| Summer 2008 | 37 | 126 | 100 | 249 | 286 | 214 | 1 | 1,013 | 36.61 years |
| % | 3.7% | 12.4% | 9.9% | 24.6% | 28.2% | 21.1% | 0% | 100% | |
| Fall 2008 | 118 | 395 | 224 | 395 | 416 | 308 | 1 | 1,857 | 33.45 years |
| % | 6.4% | 21.3% | 12.1% | 21.3% | 22.4% | 16.6% | 0% | 100% | |
| Spring 2009 | 132 | 452 | 300 | 610 | 745 | 763 | 11 | 3,013 | 37.23 years |
| % | 4.4% | 15.0% | 10.0% | 20.2% | 24.7% | 25.3% | <0.05% | 100% | |
| Summer 2009 | 92 | 231 | 149 | 331 | 398 | 265 | 3 | 1,469 | 34.84 years |
| % | 6.3% | 15.7% | 10.1% | 22.5% | 27.1% | 18.0% | 0.2% | 100% | |
| Fall 2009 | 127 | 456 | 285 | 525 | 604 | 346 | 2 | 2,345 | 33.49 years |
| % | 5.4% | 19.4% | 12.2% | 22.4% | 25.8% | 14.8% | 0.1% | 100% | |
| Spring 2010 | 111 | 449 | 390 | 806 | 938 | 768 | | 3,462 | 36.91 years |
| % | 3.2% | 13.0% | 11.3% | 23.3% | 27.1% | 22.2% | | 100% | |
| Summer 2010 | 67 | 283 | 231 | 586 | 594 | 247 | 1 | 2,009 | 33.83 years |
| % | 3.3% | 14.1% | 11.5% | 29.2% | 29.6% | 12.3% | 0.0% | 100% | |
| Fall 2010 | 92 | 523 | 421 | 830 | 832 | 331 | | 3,029 | 32.7 years |
| % | 3.0% | 17.3% | 13.9% | 27.4% | 27.5% | 10.9% | 0.0% | 100% | |
| Spring 2011 | 99 | 476 | 496 | 1,047 | 1,177 | 726 | | 4,021 | 35.89 years |
| % | 2.5% | 11.8% | 12.3% | 26.0% | 29.3% | 18.1% | 0.0% | 100% | |

SUBJECTS AND FTES

FOUR ACADEMIC YEAR COMPARISON

2007-08 to 2010-11

| Subject | FTES 2007-08 | FTES 2008-09 | % Change from Prior Year | FTES 2009-10 | % Change from Prior Year | FTES 2010-11 | % Change from Prior Year |
|--------------------------------|-----------------|-----------------|--------------------------------|-----------------|--------------------------------|-----------------|--------------------------------|
| AERO - Aviation | 2.2 | 1.2 | 53.0% | 1.8 | 35.2% | 2.1 | 14.3% |
| AGR - Agriculture | 30.8 | 28.8 | -7.1% | 42.9 | 33.0% | 41.7 | -2.9% |
| AJ - Administration of Justice | 47.1 | 48.9 | 3.7% | 53.4 | 8.5% | 50.9 | -4.9% |
| ANTH - Anthropology | 17.2 | 22.8 | 24.7% | 14.9 | -53.0% | 18.0 | 17.2% |
| ART - Art | 107.6 | 137.2 | 21.6% | 119.8 | -14.5% | 145.0 | 17.4% |
| ASTR - Astronomy | 5.0 | 9.0 | 44.4% | 4.2 | -114.3% | 0.0 | NA |
| AT - Automotive Technology | 12.9 | 21.7 | 40.7% | 29.9 | 27.4% | 24.0 | -24.7% |
| BIOL - Biology | 29.9 | 24.5 | -22.2% | 39.1 | 37.3% | 33.4 | -17.1% |
| BUS - Business | 21.2 | 39.1 | 45.7% | 30.4 | -28.4% | 32.4 | 6.1% |
| CA - Computer Applications | 8.9 | 13.1 | 31.9% | 7.3 | -79.2% | 10.9 | 33.0% |
| CARS - Careers | 6.3 | 2.3 | -171.5% | 1.8 | -31.4% | 2.2 | 19.5% |
| CD - Child Development | 23.4 | 18.0 | -30.0% | 25.9 | 30.6% | 26.8 | 3.2% |
| CG - Counseling/Guidance | | 7.5 | NA | 57.8 | 86.9% | 95.5 | 39.4% |
| CHEM - Chemistry | 5.8 | 12.4 | 53.2% | 11.1 | -11.7% | 16.6 | 33.1% |
| CORS - Correctional Science | 17.0 | 16.0 | -6.3% | 15.4 | -3.7% | 8.4 | -83.3% |
| COS - Cosmetology | 50.1 | 14.0 | NA | | NA | 5.5 | 100.0% |
| COT - Computer Office Tech | 9.2 | 7.7 | -19.0% | 7.9 | 2.5% | 0.0 | NA |
| CS - Computer Science | 2.3 | 6.5 | 64.1% | 1.5 | -333.3% | 3.8 | 60.5% |
| CT - Construction Technology | 7.7 | 2.8 | -175.3% | 2.0 | -39.8% | 0.0 | NA |
| DS - Developmental Studies | 25.5 | 41.2 | 38.1% | 35.0 | -17.8% | 57.0 | 38.6% |
| ECON - Economics | 2.2 | 3.6 | 38.9% | 10.5 | 65.7% | 10.0 | -5.0% |
| EMT - Emergency Medical Tech | 12.7 | 11.4 | -11.8% | 4.8 | -138.8% | 9.3 | 48.7% |
| ENGL - English | 85.7 | 89.3 | 4.0% | 119.8 | 25.5% | 148.8 | 19.5% |
| ES - Ethnic Studies | 24.5 | 24.8 | 1.2% | 13.9 | -78.4% | 6.1 | -127.9% |
| FILM - Film | 14.9 | 13.1 | -14.1% | 12.9 | -1.6% | 11.8 | -9.3% |
| FS - Fire Science | 22.4 | 37.5 | 40.4% | 27.4 | -37.3% | 189.9 | 85.6% |
| GEOG - Geography | 5.3 | 4.6 | -15.2% | | NA | 0.0 | NA |
| GEOL - Geology | 6.2 | 3.8 | -64.4% | 7.8 | 51.6% | 9.0 | 13.3% |
| GSS - Gunsmithing | 105.3 | 97.5 | -8.0% | 106.5 | 8.4% | 103.0 | -3.4% |
| HIST - History | 37.0 | 58.9 | 37.2% | 65.7 | 10.3% | 63.0 | -4.3% |
| HLTH - Health | 55.5 | 52.8 | -5.2% | 44.7 | -18.1% | 62.6 | 28.6% |
| HO - Health Occupations | 7.1 | 11.9 | 40.2% | 6.8 | -74.7% | 16.5 | 58.8% |
| HUM - Humanities | 19.4 | 28.9 | 32.9% | 21.0 | -37.6% | 30.1 | 30.2% |

SUBJECTS AND FTES

FOUR ACADEMIC YEAR COMPARISON 2007-08 to 2010-11

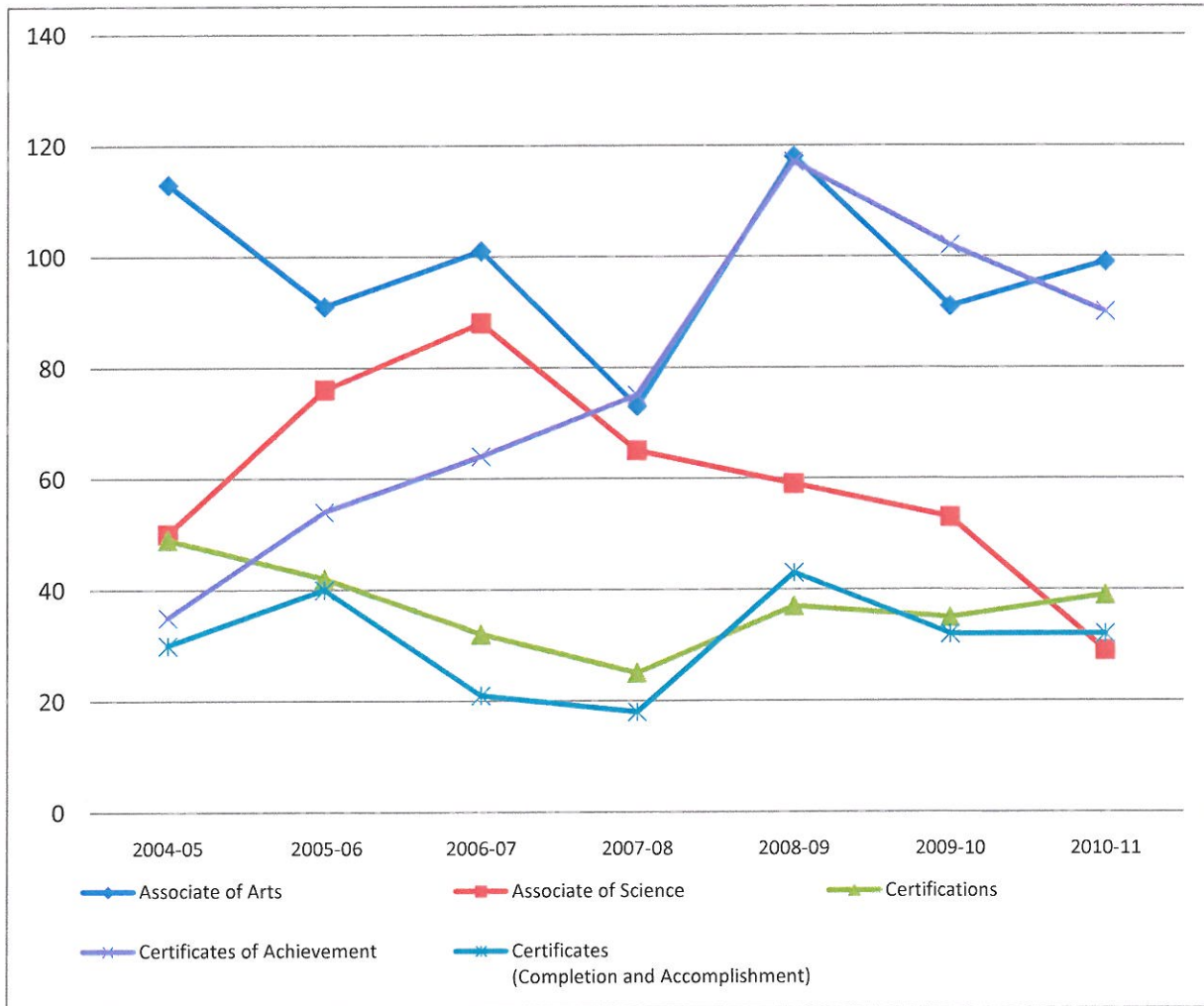
| Subject | FTES 2007-08 | FTES 2008-09 | % Change from Prior Year | FTES 2009-10 | % Change from Prior Year | FTES 2010-11 | % Change from Prior Year |
|--------------------------------|-----------------|-----------------|--------------------------------|-----------------|--------------------------------|-----------------|--------------------------------|
| HUS - Human Services | 58.3 | 49.0 | -18.9% | 62.7 | 21.8% | 103.0 | 39.1% |
| IT - Industrial Technology | 1.1 | 3.1 | 64.6% | 3.9 | 20.0% | 7.3 | 46.8% |
| JOUR - Journalism | 6.3 | 7.2 | 12.4% | 5.1 | -41.9% | 3.5 | -44.9% |
| MATH - Mathematics | 126.3 | 161.4 | 21.7% | 199.0 | 18.9% | 204.2 | 2.6% |
| MUS - Music | 9.0 | 10.8 | 16.5% | 9.8 | -10.1% | 29.6 | 66.9% |
| PE - Physical Education | 7.1 | 1.6 | | 0.0 | | 5.9 | 99.5% |
| PEAC - PE Activity | 134.2 | 108.1 | -24.1% | 117.7 | 8.2% | 107.5 | -9.5% |
| PEP - Power Generation Tech | 1.2 | 0.4 | -224.0% | 0.7 | 49.0% | 0.5 | -48.0% |
| PHIL - Philosophy | 22.0 | 14.9 | -47.7% | 9.0 | -65.6% | 23.6 | 61.9% |
| PHSC - Physical Science | 3.6 | 1.3 | -176.9% | 2.1 | 38.1% | 1.7 | -23.5% |
| PHYS - Physics | | 2.0 | | | | 3.2 | 100.0% |
| PLSC - Political Science | 22.8 | 25.3 | 9.9% | 20.0 | -26.5% | 23.0 | 13.0% |
| PSY - Psychology | 93.7 | 95.6 | 2.0% | 85.6 | -11.7% | 87.9 | 2.6% |
| READ - Reading | 9.7 | 15.5 | 37.6% | 12.7 | -22.4% | 15.8 | 19.9% |
| SOC - Sociology | 34.4 | 36.0 | 4.4% | 67.5 | 46.7% | 104.5 | 35.5% |
| SPAN - Spanish | | 5.1 | | 7.7 | 33.1% | 4.0 | -91.8% |
| SPCH - Speech | 11.0 | 11.6 | 5.3% | 11.6 | -0.2% | 12.5 | 7.4% |
| TUTR - Tutoring | | 0.1 | | 0.1 | -18.5% | 1.2 | 92.5% |
| VN - Vocational Nursing | 55.0 | 35.7 | -53.8% | 39.8 | 10.3% | 42.7 | 6.8% |
| WE - Work Experience | 9.0 | 11.7 | 23.3% | 14.4 | 18.3% | 14.1 | -1.9% |
| WT - Welding Technology | 48.9 | 64.1 | 23.6% | 49.2 | -30.2% | 31.9 | -54.3% |
| Grand Total | 1483.4 | 1573.5 | 5.7% | 1662.4 | 5.3% | 2033.0 | 18.2% |

AWARDS

AWARDS

NUMBER AWARDED BY AWARD LEVEL

AY 2004-2005 TO 2010-2011



| | 2004-05 | 2005-06 | 2006-07 | 2007-08 | 2008-09 | 2009-10 | 2010-11 |
|--|------------|------------|------------|------------|------------|------------|------------|
| Associate of Arts | 113 | 91 | 101 | 73 | 118 | 91 | 99 |
| Associate of Science | 50 | 76 | 88 | 65 | 59 | 53 | 29 |
| Certifications | 49 | 42 | 32 | 25 | 37 | 35 | 39 |
| Certificates of Achievement | 35 | 54 | 64 | 75 | 117 | 102 | 90 |
| Certificates (Completion and Accomplishment) | 30 | 40 | 21 | 18 | 43 | 32 | 32 |
| Total | 277 | 303 | 306 | 256 | 374 | 313 | 289 |

| | | | | | | | |
|-------------------------------------|--|------|------|--------|-------|--------|-------|
| Academic Year Percent Change | | 9.4% | 1.0% | -16.3% | 46.1% | -16.3% | -7.7% |
|-------------------------------------|--|------|------|--------|-------|--------|-------|

Source: LCCD Transfer Center

AWARDS

PERCENTAGE AWARDS TO HEADCOUNT AND TOP 10 PROGRAMS FOR LOCAL STUDENTS

AY 2004-2005 TO 2009-10

| | 2004-05 | 2005-06 | 2006-07 | 2007-08 | 2008-09 | 2009-10 | 2010-11 |
|---------------------------------|---------|---------|---------|---------|---------|---------|---------|
| Award Count | 208 | 277 | 147 | 195 | 365 | 313 | 289 |
| Headcount (Unduplicated) | 5422 | 3807 | 3334 | 3062 | 3881 | 4485 | NA |
| Percentage Awards to Enrollment | 3.84% | 7.28% | 4.41% | 6.37% | 9.40% | 6.98% | NA |

Top Academic Programs For Local Students Graduated (duplicated)

| 2008-09 | Grads |
|--|-------|
| CSU General Education Certificate of Achievement | 14 |
| CSU General Education Certification | 14 |
| University Studies: CSU A.A. Degree | 14 |
| Liberal Arts A.A. Degree | 8 |
| AA University Studies: Emphasis in Social Science | 5 |
| Vocational Nursing Certificate of Achievement | 3 |
| AA General Studies: Emphasis in Social Science | 3 |
| Child Development Certificate of Achievement | 3 |
| Child Development Certificate of Completion | 3 |
| U.A. Administration of Justice | 3 |
| Administration of Justice Certificate of Achievement | 3 |

| 2009-10 | Grads |
|--|-------|
| CSU General Education Certificate of Achievement | 19 |
| CSU General Education Certification | 18 |
| University Studies: CSU A.A. Degree | 8 |
| AA University Studies: Emphasis in Social Science | 8 |
| Vocational Nursing Certificate of Achievement | 8 |
| A.S. Vocational Nursing | 7 |
| AA General Studies: Emphasis in Social Science | 5 |
| AA University Studies: Emphasis in Natural Science | 3 |
| Fire Technology Certificate of Achievement | 3 |
| Associate in Science Degree - Fire Technology | 3 |

| 2010-11 | Grads |
|--|-------|
| CSU General Education Certification | 23 |
| CSU General Education Certificate of Achievement | 23 |
| AA University Studies: Emphasis in Social Science | 10 |
| AA General Studies: Emphasis in Social Science | 5 |
| AA University Studies: Emphasis in Allied Health | 4 |
| University Studies: CSU A.A. Degree | 3 |
| AA University Studies: Business Administration | 2 |
| Administration of Justice Certificate of Achievement | 2 |
| A.S. Vocational Nursing | 2 |
| Vocational Nursing Certificate of Achievement | 2 |

SECTIONS

SECTIONS

SECTIONS BY MODALITY AND DAY/EVENING AY 2007-2008 to 2010-2011

All Sections

| | 2007-08 | 2008-09 | 2009-10 | 2010-11 |
|-----------------------------|------------|------------|------------|-------------|
| Traditional | 703 | 722 | 725 | 755 |
| Correspondence | 163 | 171 | 238 | 260 |
| Online | 10 | 24 | 34 | 32 |
| Total Credit Courses | 876 | 917 | 997 | 1047 |

Traditional Sections by Day/Evening

| | 2007-08 | 2008-09 | 2009-10 | 2010-11 |
|---------------------------------|------------|------------|------------|------------|
| Day | 531 | 552 | 564 | 609 |
| Evening | 172 | 170 | 161 | 146 |
| Total Non-Credit Courses | 703 | 722 | 725 | 755 |

FTES by Modality by Academic Year

| | 2007-08 | 2008-09 | 2009-10 | 2010-11 |
|-----------------------|---------------|---------------|---------------|---------------|
| Traditional | 984.6 | 1043.9 | 1093.1 | 1270.8 |
| Correspondence | 419.1 | 423.7 | 560.0 | 661.1 |
| Online | 19.5 | 54.5 | 54.4 | 71.4 |
| Total FTES | 1423.2 | 1522.1 | 1707.5 | 2003.3 |

SECTIONS

SECTION DAYS BY ACADEMIC YEAR 2008-2009 to 2010-2011

| Days | 2008-09 | 2009-10 | 2010-11 | Grand Total |
|--------------------|------------|------------|------------|-------------|
| F | 17 | 10 | 13 | 40 |
| FS | | 1 | 2 | 3 |
| FSSu | 1 | 1 | 1 | 3 |
| M | 25 | 25 | 26 | 76 |
| MF | | 1 | | 1 |
| MS | | | 1 | 1 |
| MT | 2 | 2 | 2 | 6 |
| MTh | 5 | 1 | | 6 |
| MTTh | 3 | 2 | 2 | 7 |
| MTThF | | 2 | 1 | 3 |
| MTW | 1 | | | 1 |
| MTWF | 1 | | 2 | 3 |
| MTWSSu | 1 | | | 1 |
| MTWTh | 27 | 28 | 26 | 81 |
| MTWThF | 118 | 120 | 120 | 358 |
| MTWThFS | | | 3 | 3 |
| MTWThFSSu | 1 | 8 | 12 | 21 |
| MW | 83 | 94 | 91 | 268 |
| MWF | 63 | 57 | 62 | 182 |
| MWS | 1 | 1 | | 2 |
| MWTh | | | 1 | 1 |
| MWThF | 4 | 8 | 6 | 18 |
| S | 36 | 26 | 18 | 80 |
| SSu | 3 | 3 | 1 | 7 |
| Su | 2 | 4 | 5 | 11 |
| T | 37 | 43 | 39 | 119 |
| TBA | 100 | 90 | 108 | 298 |
| Th | 24 | 32 | 32 | 88 |
| ThF | 1 | 1 | 2 | 4 |
| ThFS | | 1 | | 1 |
| ThS | 5 | 5 | 4 | 14 |
| TTh | 101 | 108 | 90 | 299 |
| TThF | | | 1 | 1 |
| TThS | 3 | 1 | | 4 |
| TW | 9 | 4 | 2 | 15 |
| TWTh | 11 | 7 | 6 | 24 |
| TWThF | 7 | 7 | 42 | 56 |
| TWThFS | | | 3 | 3 |
| TWThFSSu | | | 1 | 1 |
| W | 26 | 31 | 27 | 84 |
| WF | | 1 | 1 | 2 |
| WS | 1 | | | 1 |
| WSSu | | | 1 | 1 |
| WTh | 3 | | | 3 |
| WThF | | | 1 | 1 |
| Grand Total | 722 | 725 | 755 | |

SECTIONS

SECTION MODALITY BY TERM Fall 2007 to Fall 2010

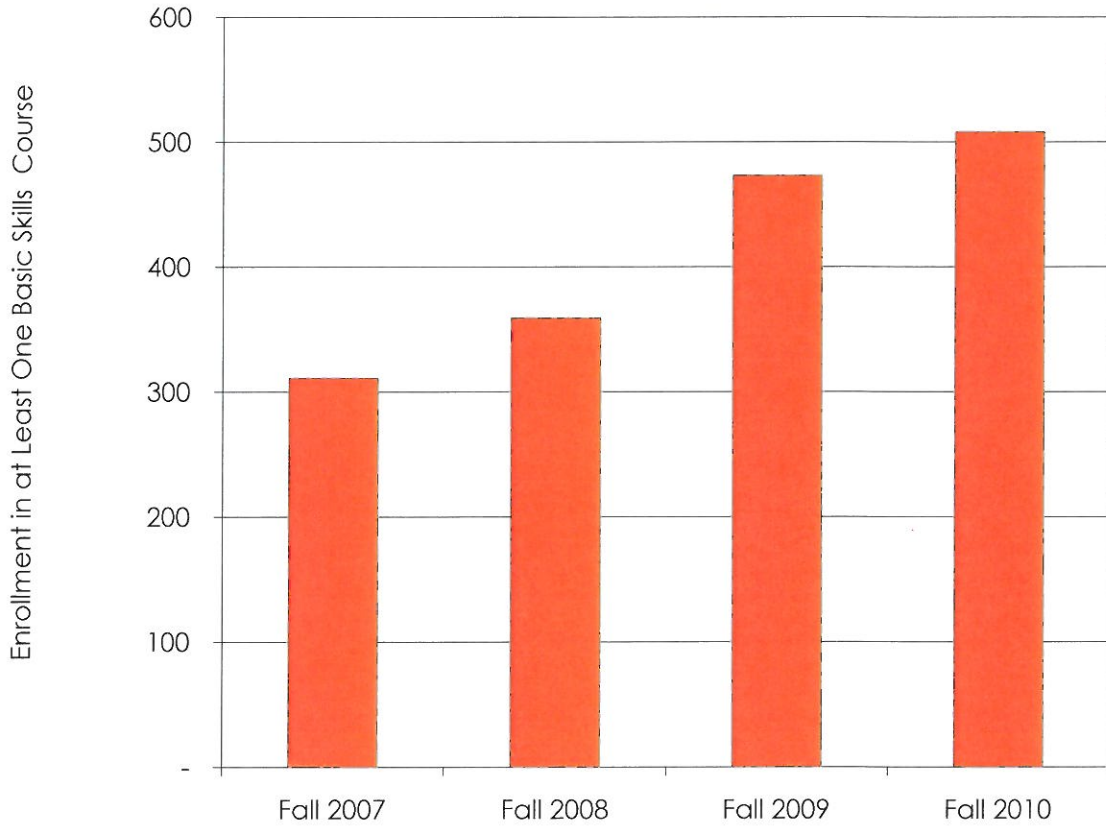
| | Traditional | | Distance Learning | | Grand Total |
|--------------------|---------------------|--------------------|------------------------|-----------------|-------------|
| | Main Campus Courses | Off-Campus Courses | Correspondence Courses | On-line Courses | |
| Fall 2007 | 300 | 28 | 71 | 4 | 403 |
| % | 74.4% | 6.9% | 17.6% | 1.0% | 100% |
| Spring 2008 | 289 | 28 | 55 | 4 | 376 |
| % | 76.9% | 7.4% | 14.6% | 1.1% | 100% |
| Summer 2008 | 82 | 12 | 36 | 1 | 131 |
| % | 62.6% | 9.2% | 27.5% | 0.8% | 100% |
| Fall 2008 | 307 | 22 | 65 | 7 | 401 |
| % | 76.6% | 5.5% | 16.2% | 1.7% | 100% |
| Spring 2009 | 321 | 25 | 71 | 16 | 433 |
| % | 74.1% | 5.8% | 16.4% | 3.7% | 100% |
| Summer 2009 | 110 | 6 | 51 | 4 | 171 |
| % | 64.3% | 3.5% | 29.8% | 2.3% | 100% |
| Fall 2009 | 290 | 10 | 100 | 12 | 412 |
| % | 70.4% | 2.4% | 24.3% | 2.9% | 100% |
| Spring 2010 | 310 | 16 | 86 | 18 | 430 |
| % | 72.1% | 3.7% | 20.0% | 4.2% | 100% |
| Summer 2010 | 109 | 2 | 51 | 4 | 166 |
| % | 65.7% | 1.2% | 30.7% | 2.4% | 100% |
| Fall 2010 | 312 | 10 | 97 | 13 | 432 |
| % | 72.2% | 2.3% | 22.5% | 3.0% | 100% |

BASIC SKILLS

BASIC SKILLS ENROLLMENT

TOTAL ENROLLMENT

Fall 2007 to Fall 2010



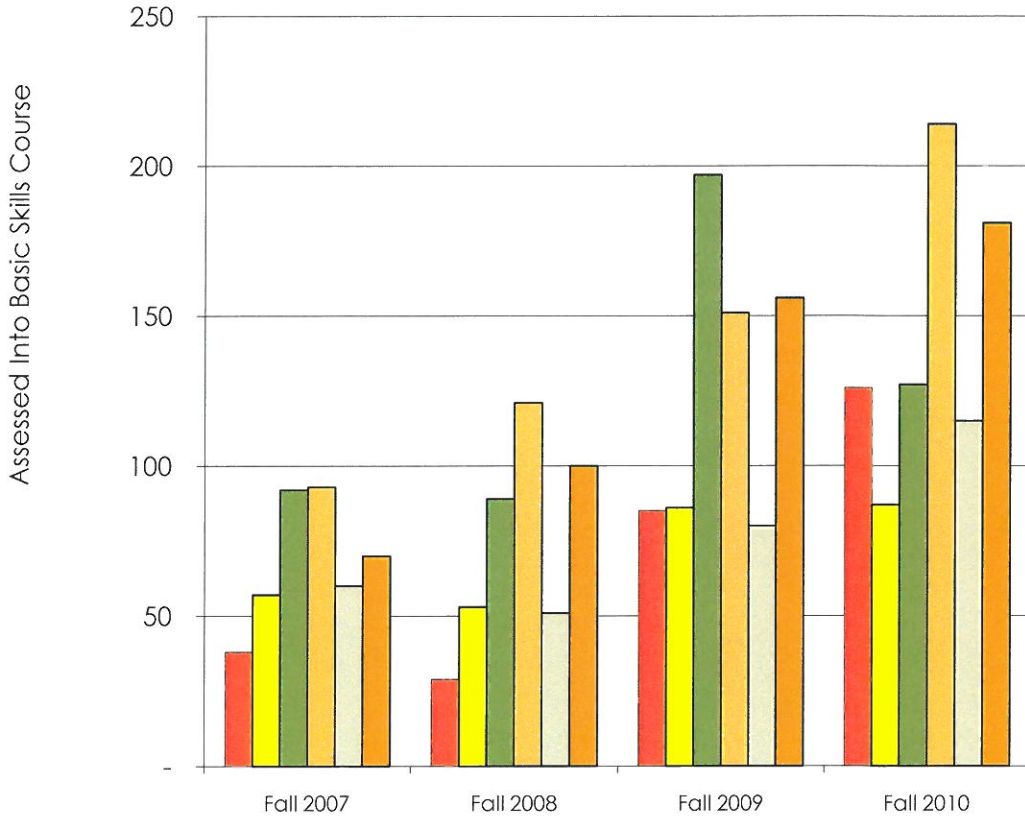
| | Number of Students Enrolled in at Least One Basic Skills Course | Yearly Percent Change |
|------------------|--|-----------------------------|
| Fall 2007 | 311 | |
| Fall 2008 | 359 | 15.4% |
| Fall 2009 | 473 | 31.8% |
| Fall 2010 | 508 | 7.4% |

This is an unduplicated count of students

BASIC SKILLS ASSESSMENT

TOTAL NEW STUDENTS ASSESSED AS REQUIRING BASIC SKILLS COURSEWORK

Fall 2007 to Fall 2010



| NUMBER | Fall 2007 | Fall 2008 | Fall 2009 | Fall 2010 |
|-------------|-----------|-----------|-----------|-----------|
| English 102 | 38 | 29 | 85 | 126 |
| English 103 | 57 | 53 | 86 | 87 |
| Math 101 | 92 | 89 | 197 | 127 |
| Math 102 | 93 | 121 | 151 | 214 |
| Reading 101 | 60 | 51 | 80 | 115 |
| Reading 51 | 70 | 100 | 156 | 181 |

| % | Fall 2007 | Fall 2008 | Fall 2009 | Fall 2010 |
|---------------------------|------------|------------|------------|-------------|
| English 102 | 7.8% | 6.4% | 12.7% | 10.5% |
| English 103 | 11.8% | 11.7% | 12.9% | 7.3% |
| Math 101 | 19.0% | 19.6% | 29.5% | 10.6% |
| Math 102 | 19.2% | 26.7% | 22.6% | 17.9% |
| Reading 101 | 12.4% | 11.2% | 12.0% | 9.6% |
| Reading 51 | 14.4% | 22.0% | 23.4% | 15.1% |
| Total New Students | 485 | 454 | 668 | 1198 |

LCCD EMPLOYEES

LCCD EMPLOYEES

EMPLOYEE JOB CATEGORY BY POSITIONS

Headcount Fall 2005 to Fall 2010

| | Exec/ Admin/ Managerial | Tenured/ Tenure Track | Academic Temporary | Professional, Other | Clerical/ Secretary | Technical Paraprofessional | Skilled Crafts | Service / Maintenance | Total |
|------------------|----------------------------|--------------------------|-----------------------|------------------------|------------------------|-------------------------------|-------------------|--------------------------|-------|
| Fall 2005 | 9 | 42 | 82 | 4 | 18 | 32 | 6 | 8 | 201 |
| % | 4.5% | 20.9% | 40.8% | 2.0% | 9.0% | 15.9% | 3.0% | 4.0% | 100% |
| Fall 2006 | 13 | 40 | 93 | 2 | 18 | 33 | 6 | 9 | 214 |
| % | 6.1% | 18.7% | 43.5% | 0.9% | 8.4% | 15.4% | 2.8% | 4.2% | 100% |
| Fall 2007 | 10 | 38 | 88 | 10 | 15 | 35 | 5 | 9 | 210 |
| % | 4.8% | 18.1% | 41.9% | 4.8% | 7.1% | 16.7% | 2.4% | 4.3% | 100% |
| Fall 2008 | 15 | 38 | 81 | 7 | 15 | 34 | 5 | 8 | 203 |
| % | 7.4% | 18.7% | 39.9% | 3.4% | 7.4% | 16.7% | 2.5% | 3.9% | 100% |
| Fall 2009 | 12 | 38 | 92 | 8 | 12 | 31 | 5 | 7 | 205 |
| % | 5.9% | 18.5% | 44.9% | 3.9% | 5.9% | 15.1% | 2.4% | 3.4% | 100% |
| Fall 2010 | 11 | 41 | 96 | 7 | 11 | 33 | 6 | 7 | 212 |
| % | 5.2% | 19.3% | 45.3% | 3.3% | 5.2% | 15.6% | 2.8% | 3.3% | 100% |

EMPLOYEES

LCCD EMPLOYEES: GENDER, AGE, YEARS OF SERVICE

Fall 2010

| | | Female | Male | Total |
|-------------------------|---|--------|-------|--------|
| Fall 2010 Gender | | 68 | 49 | 117 |
| | % | 58.1% | 41.9% | 100.0% |

| | | 27-39 years | 40-49 years | 50-59 years | 60-68 years | Total |
|----------------------|---|-------------|-------------|-------------|-------------|--------|
| Fall 2010 Age | | 14 | 32 | 47 | 24 | 117 |
| | % | 12.0% | 27.4% | 40.2% | 20.5% | 100.0% |

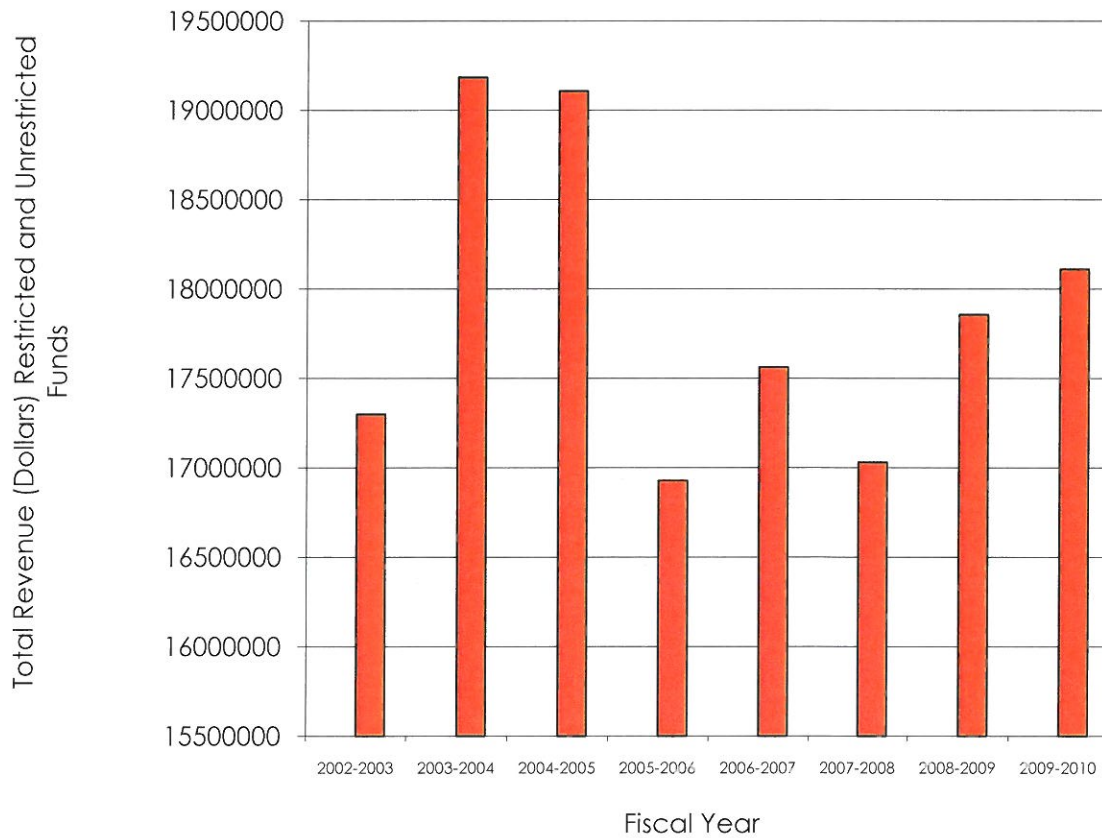
| | | 0-3 years | 4-9 years | 10-14 years | 15-23 years | 24-36 years | Total | Average Years Service |
|-----------------------------------|---|-----------|-----------|-------------|-------------|-------------|--------|-----------------------------|
| Fall 2010 Years of Service | | 24 | 28 | 30 | 24 | 11 | 117 | 11.4 |
| | % | 20.5% | 23.9% | 25.6% | 20.5% | 9.4% | 100.0% | |

REVENUES AND EXPENDITURES

REVENUES

ACTUAL REVENUES: RESTRICTED AND UNRESTRICTED

Fiscal Years 2003 to 2010

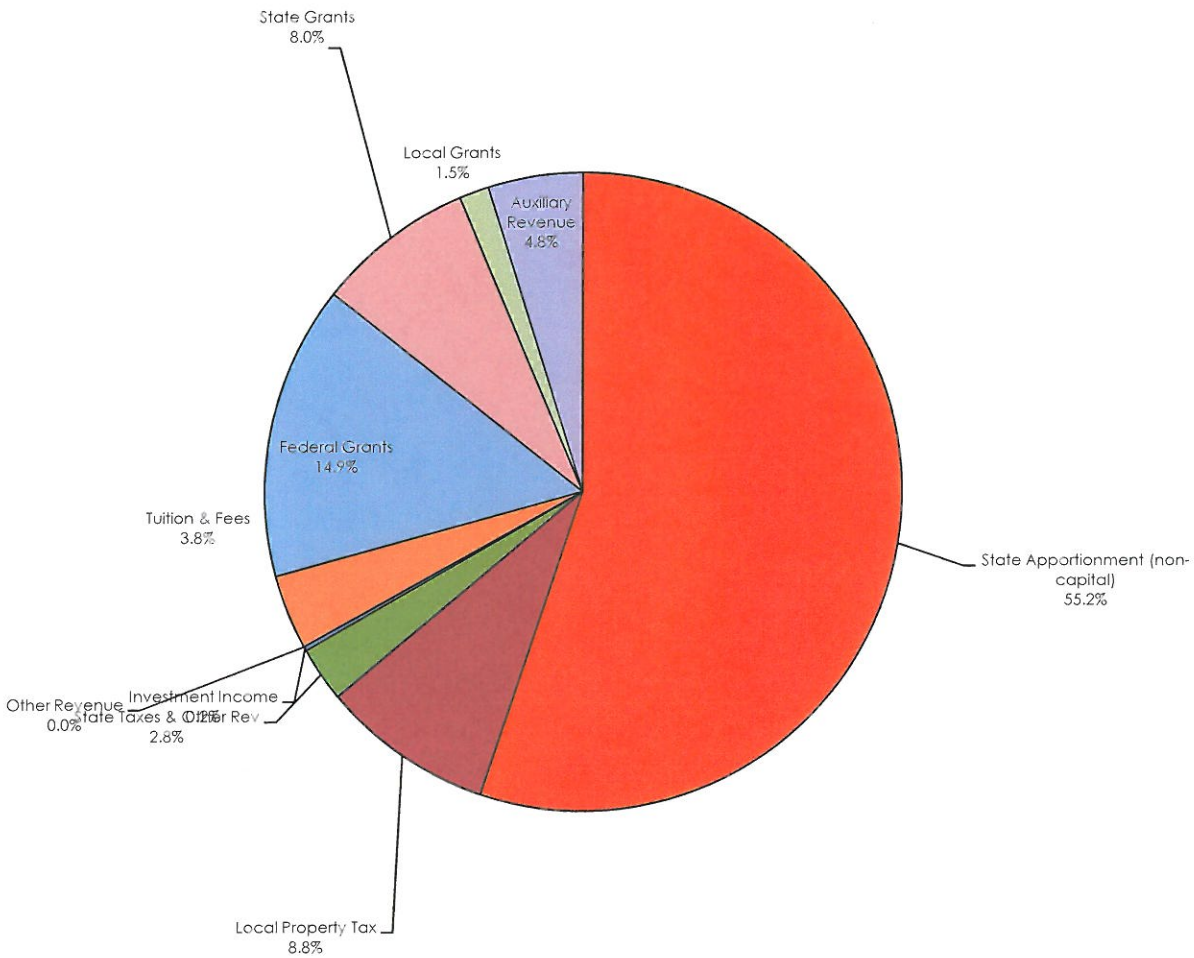


| Fiscal Year | Total Revenues: Restricted and Unrestricted Funds | Yearly Percent Change |
|-------------|--|--------------------------|
| 2002-2003 | 17,299,019 | |
| 2003-2004 | 19,185,230 | 9.8% |
| 2004-2005 | 19,106,674 | -0.4% |
| 2005-2006 | 16,927,663 | -12.9% |
| 2006-2007 | 17,562,178 | 3.6% |
| 2007-2008 | 17,030,541 | -3.1% |
| 2008-2009 | 17,857,016 | 4.6% |
| 2009-2010 | 18,110,692 | 1.4% |

Source: LCCD Administrative Services: Audit Reports

REVENUES

ACTUAL REVENUES: RESTRICTED AND UNRESTRICTED Fiscal Year 209-2010



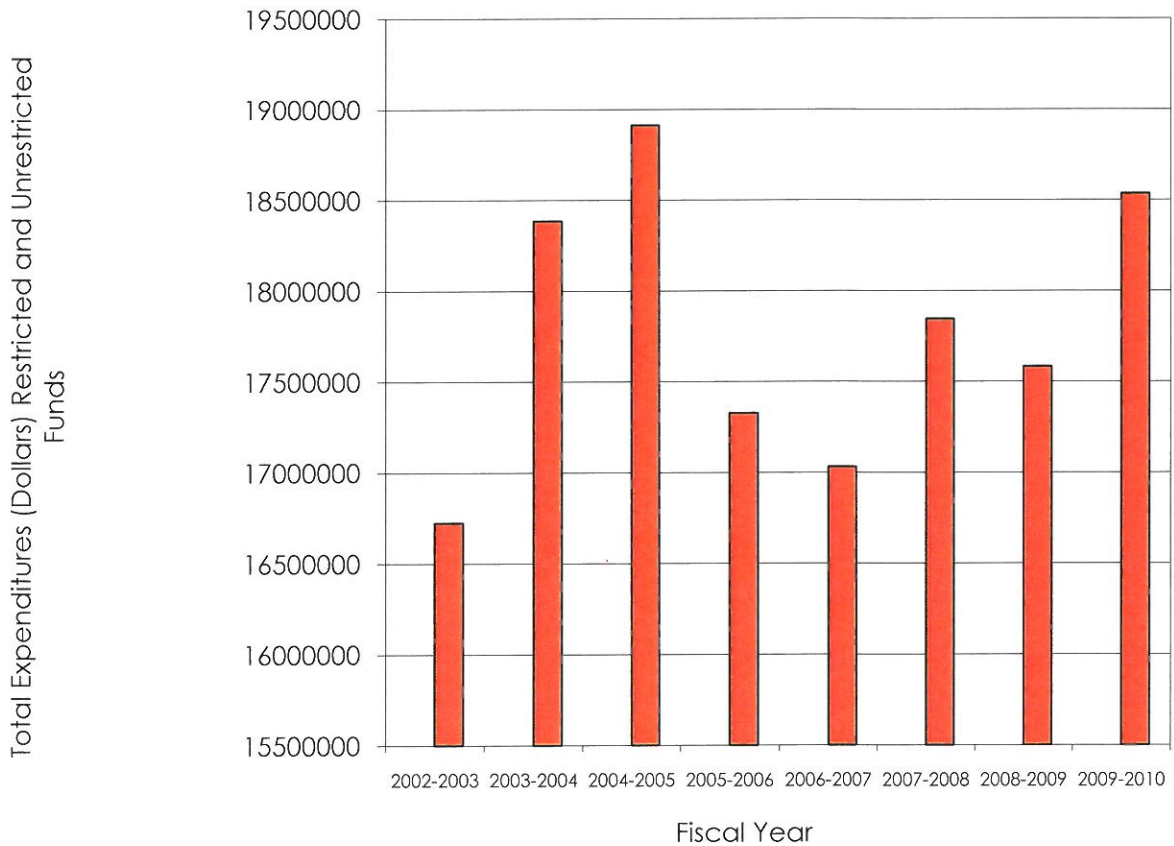
| Revenues: Restricted and Unrestricted | Amount | Percent of Total Revenues |
|---------------------------------------|-------------------|---------------------------|
| State Apportionment (non-capital) | 9,996,218 | 55.2% |
| Local Property Tax | 1,585,235 | 8.8% |
| State Taxes & Other Rev | 506,443 | 2.8% |
| Investment Income | 40,323 | 0.2% |
| Other Revenue | 682 | 0.0% |
| Tuition & Fees | 685,775 | 3.8% |
| Federal Grants | 2,698,925 | 14.9% |
| State Grants | 1,449,307 | 8.0% |
| Local Grants | 273,138 | 1.5% |
| Auxiliary Revenue | 874,646 | 4.8% |
| Total Revenue | 18,110,692 | 100% |

Source: LCCD Administrative Services: Audit Reports

EXPENDITURES

ACTUAL EXPENDITURES: RESTRICTED AND UNRESTRICTED

Fiscal Years 2003-2004 to 2009-2010



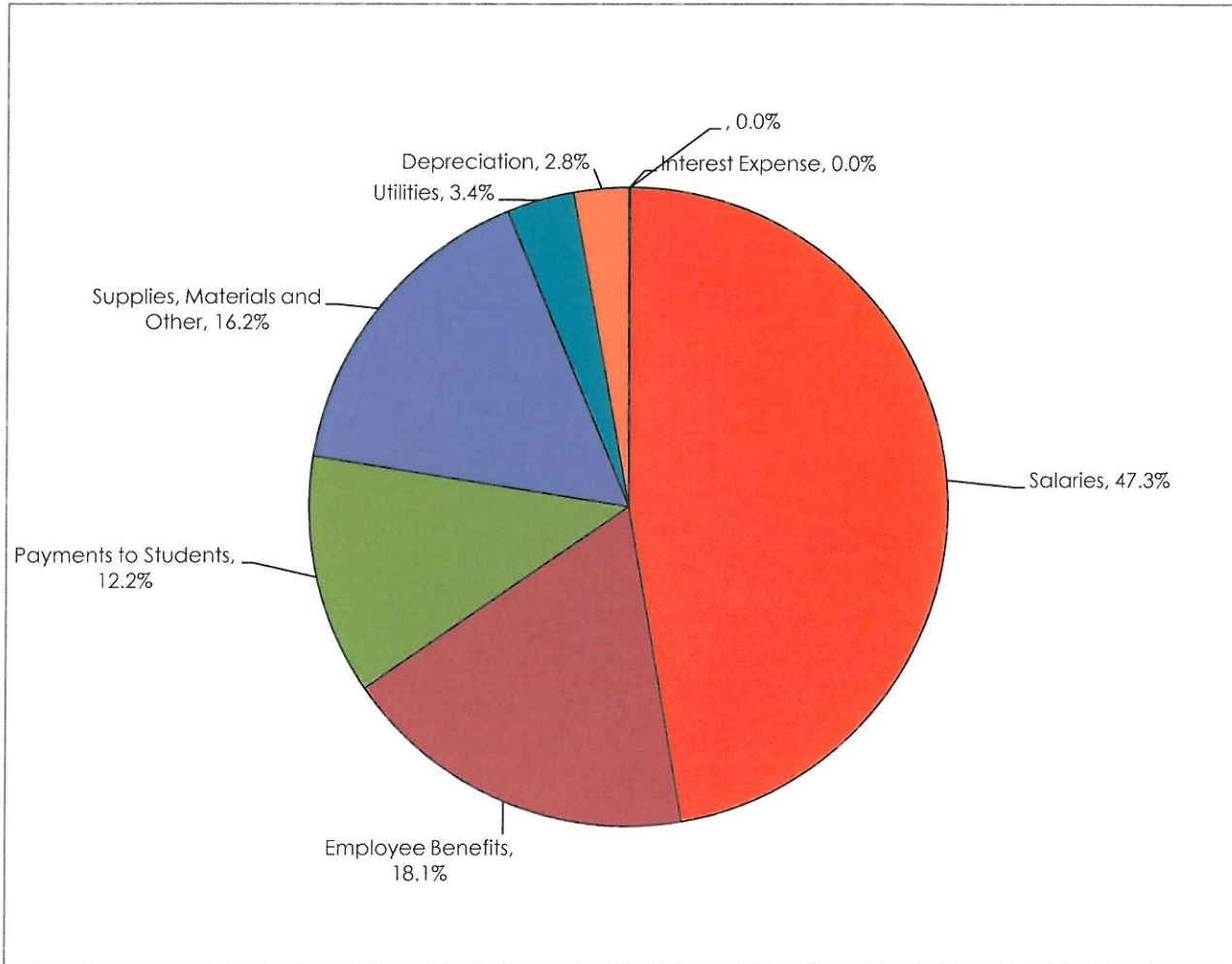
| Fiscal Year | Total Expenditures: Restricted and Unrestricted Funds | Yearly Percent Change |
|-------------|--|--------------------------|
| 2002-2003 | 16,724,816 | |
| 2003-2004 | 18,385,585 | 9.0% |
| 2004-2005 | 18,912,796 | 2.8% |
| 2005-2006 | 17,327,302 | -9.2% |
| 2006-2007 | 17,030,565 | -1.7% |
| 2007-2008 | 17,846,556 | 4.6% |
| 2008-2009 | 17,582,741 | -1.5% |
| 2009-2010 | 18,534,424 | 5.1% |

Source: LCCD Administrative Services: Audit Reports

EXPENDITURES

ACTUAL EXPENDITURES: RESTRICTED AND UNRESTRICTED

Fiscal Year 2009-2010



| Expenditures: Restricted and Unrestricted | Amount | Percent of Total Expenditures |
|---|-------------------|-------------------------------|
| Salaries | 8,770,396 | 47.3% |
| Employee Benefits | 3,345,960 | 18.1% |
| Payments to Students | 2,254,193 | 12.2% |
| Supplies, Materials and Other | 3,011,741 | 16.2% |
| Utilities | 627,868 | 3.4% |
| Depreciation | 515,896 | 2.8% |
| Interest Expense | 8,370 | 0.0% |
| Total Expenditures | 18,534,424 | 100% |

PROGRAM SPECIFIC DATA

STUDENTS

STUDENT OUTCOMES BY MODALITY

Fall 2008 to Fall 2010

| | Fall 2008 | All Fall 2008 | Fall 2009 | All Fall 2009 | Fall 2010 | All Fall 2010 |
|---|---------------|-------------------|---------------|-------------------|---------------|-------------------|
| Incarcerated Correspondence Students | 17.28% | 1,852 | 29.56% | 2,341 | 27.57% | 3,029 |
| Course Retention Rate | 81.48% | 86.16% | 81.48% | 83.48% | 80.00% | 84.89% |
| Course Success Rate | 65.49% | 71.49% | 53.14% | 66.11% | 60.74% | 68.64% |
| Transfer Ready Rate | 0.00% | 1.84% | 0.00% | 1.67% | 0.00% | 1.16% |
| Next Term Persistence Rate | 66.25% | 63.39% | 40.61% | 53.52% | 66.71% | 51.54% |
| Next Year Persistence Rate | 41.25% | 39.09% | 27.31% | 34.86% | 51.74% | 25.62% |
| Avg. GPA | 2.77 | 2.84 | 2.37 | 2.62 | 2.55 | 2.63 |
| Avg. Units Enrolled | 8.5 | 7.6 | 6.5 | 7.3 | 6.3 | 6.7 |
| Non-Incarcerated Correspondence Students | 19.38% | 1,852 | 20.76% | 2,341 | 14.96% | 3,029 |
| Course Retention Rate | 85.35% | 86.16% | 85.35% | 83.48% | 78.92% | 84.89% |
| Course Success Rate | 68.50% | 71.49% | 62.49% | 66.11% | 58.95% | 68.64% |
| Transfer Ready Rate | 3.62% | 1.84% | 2.67% | 1.67% | 3.09% | 1.16% |
| Next Term Persistence Rate | 64.35% | 63.39% | 59.88% | 53.52% | 58.50% | 51.54% |
| Next Year Persistence Rate | 33.70% | 39.09% | 43.62% | 34.86% | 23.62% | 25.62% |
| Avg. GPA | 2.59 | 2.84 | 2.41 | 2.62 | 2.40 | 2.63 |
| Avg. Units Enrolled | 10.4 | 7.6 | 10.7 | 7.3 | 10.5 | 6.7 |
| | 2008FA | All 2008FA | 2009FA | All 2009FA | 2010FA | All 2010FA |
| All Other Students | 63.28% | 1,852 | 49.68% | 2,341 | 57.48% | 3,029 |
| Course Retention Rate | 87.82% | 86.16% | 87.82% | 83.48% | 89.46% | 84.89% |
| Course Success Rate | 74.41% | 71.49% | 74.53% | 66.11% | 76.03% | 68.64% |
| Transfer Ready Rate | 1.79% | 1.84% | 2.24% | 1.67% | 1.21% | 1.16% |
| Next Term Persistence Rate | 62.37% | 63.39% | 58.56% | 53.52% | 42.45% | 51.54% |
| Next Year Persistence Rate | 40.19% | 39.09% | 35.68% | 34.86% | 13.61% | 25.62% |
| Avg. GPA | 2.97 | 2.84 | 2.91 | 2.62 | 2.81 | 2.63 |
| Avg. Units Enrolled | 6.5 | 7.6 | 6.3 | 7.3 | 5.9 | 6.7 |

STUDENTS

STUDENT OUTCOMES BY MODALITY

Spring 2009 to Spring 2011

| | Spring 2009 | All Spring 2009 | Spring 2010 | All Spring 2010 | Spring 2011 | All Spring 2011 |
|---|----------------|--------------------|----------------|--------------------|----------------|--------------------|
| Incarcerated Correspondence Students | 12.19% | 3,010 | 19.24% | 3,462 | 26.31% | 4,021 |
| Course Retention Rate | 74.09% | 85.64% | 74.09% | 88.95% | 82.42% | 87.62% |
| Course Success Rate | 64.35% | 73.16% | 55.01% | 73.36% | 60.47% | 70.41% |
| Transfer Ready Rate | 0.00% | 2.26% | 0.00% | 1.85% | 0.00% | 1.44% |
| Next Term Persistence Rate | 50.14% | 32.39% | 49.40% | 31.66% | 56.05% | 26.24% |
| Next Year Persistence Rate | 23.43% | 38.07% | 43.99% | 37.84% | 0.00% | 0.00% |
| Avg. GPA | 3.05 | 3.23 | 2.27 | 3.04 | 2.47 | 2.85 |
| Avg. Units Enrolled | 8.8 | 5.5 | 6.4 | 5.1 | 6.3 | 5.5 |
| Non-Incarcerated Correspondence Students | 14.19% | 3,010 | 13.46% | 3,462 | 11.02% | 4,021 |
| Course Retention Rate | 83.87% | 85.64% | 83.87% | 88.95% | 84.78% | 87.62% |
| Course Success Rate | 66.09% | 73.16% | 66.55% | 73.36% | 61.00% | 70.41% |
| Transfer Ready Rate | 4.45% | 2.26% | 4.51% | 1.85% | 3.61% | 1.44% |
| Next Term Persistence Rate | 50.12% | 32.39% | 50.43% | 31.66% | 32.28% | 26.24% |
| Next Year Persistence Rate | 35.83% | 38.07% | 40.13% | 37.84% | 0.00% | 0.00% |
| Avg. GPA | 2.61 | 3.23 | 2.50 | 3.04 | 2.33 | 2.85 |
| Avg. Units Enrolled | 10.7 | 5.5 | 10.6 | 5.1 | 10.6 | 5.5 |
| | 2008FA | All 2008FA | 2009FA | All 2009FA | 2010FA | All 2010FA |
| All Other Students | 73.59% | 3,010 | 67.30% | 3,462 | 62.67% | 4,021 |
| Course Retention Rate | 89.18% | 85.64% | 89.18% | 88.95% | 91.04% | 87.62% |
| Course Success Rate | 78.01% | 73.16% | 82.00% | 73.36% | 78.33% | 70.41% |
| Transfer Ready Rate | 2.21% | 2.26% | 1.85% | 1.85% | 1.67% | 1.44% |
| Next Term Persistence Rate | 26.00% | 32.39% | 22.83% | 31.66% | 12.66% | 26.24% |
| Next Year Persistence Rate | 40.90% | 38.07% | 35.62% | 37.84% | 0.00% | 0.00% |
| Avg. GPA | 3.39 | 3.23 | 3.44 | 3.04 | 3.24 | 2.85 |
| Avg. Units Enrolled | 3.9 | 5.5 | 3.7 | 5.1 | 4.3 | 5.5 |

STUDENTS

STUDENT OUTCOMES BY MODALITY

Summer 2008 to Summer 2010

| | Summer 2008 | All SpAll Summer 2008 | Summer 2009 | All Summer 2009 | Summer 2010 | All Summer 2010 |
|---|----------------|-----------------------------|----------------|--------------------|----------------|--------------------|
| Incarcerated Correspondence Students | 24.28% | 1,013 | 29.45% | 1,467 | 30.86% | 2,009 |
| Course Retention Rate | 89.44% | 93.49% | 89.44% | 85.80% | 85.30% | 90.39% |
| Course Success Rate | 77.23% | 83.15% | 59.43% | 74.16% | 70.15% | 78.78% |
| Transfer Ready Rate | 0.00% | 1.28% | 0.00% | 1.16% | 0.00% | 0.60% |
| Next Term Persistence Rate | 64.23% | 48.96% | 67.13% | 57.33% | 74.84% | 53.51% |
| Next Year Persistence Rate | 30.89% | 25.17% | 18.29% | 20.65% | 41.45% | 23.15% |
| Avg. GPA | 3.11 | 3.15 | 2.69 | 2.93 | 2.84 | 2.92 |
| Avg. Units Enrolled | 5.2 | 4.1 | 5.0 | 3.5 | 4.3 | 3.2 |
| Non-Incarcerated Correspondence Students | 25.86% | 1,013 | 19.84% | 1,467 | 11.10% | 2,009 |
| Course Retention Rate | 89.66% | 93.49% | 89.66% | 85.80% | 81.51% | 90.39% |
| Course Success Rate | 70.50% | 83.15% | 67.34% | 74.16% | 65.07% | 78.78% |
| Transfer Ready Rate | 3.05% | 1.28% | 2.41% | 1.16% | 3.14% | 0.60% |
| Next Term Persistence Rate | 64.12% | 48.96% | 69.42% | 57.33% | 69.51% | 53.51% |
| Next Year Persistence Rate | 21.76% | 25.17% | 23.37% | 20.65% | 17.49% | 23.15% |
| Avg. GPA | 2.61 | 3.15 | 2.64 | 2.93 | 2.77 | 2.92 |
| Avg. Units Enrolled | 6.0 | 4.1 | 5.6 | 3.5 | 5.7 | 3.2 |
| All Other Students | 49.65% | 1,013 | 50.58% | 1,467 | 57.99% | 2,009 |
| Course Retention Rate | 98.31% | 93.49% | 98.31% | 85.80% | 97.60% | 90.39% |
| Course Success Rate | 95.07% | 83.15% | 93.27% | 74.16% | 90.50% | 78.78% |
| Transfer Ready Rate | 0.99% | 1.28% | 1.35% | 1.16% | 0.43% | 0.60% |
| Next Term Persistence Rate | 33.40% | 48.96% | 47.04% | 57.33% | 39.06% | 53.51% |
| Next Year Persistence Rate | 23.86% | 25.17% | 20.89% | 20.65% | 14.51% | 23.15% |
| Avg. GPA | 3.66 | 3.15 | 3.40 | 2.93 | 3.17 | 2.92 |
| Avg. Units Enrolled | 2.6 | 4.1 | 1.8 | 3.5 | 2.2 | 3.2 |

COURSE OUTCOMES BY MODALITY

STUDENT OUTCOMES BY MODALITY

Summer 2007 to Spring 2011

| Term | Main Campus Courses | Main Campus Retention | Main Campus Success | Off Campus Courses | Off Campus Retention | Off Campus Success | Total Face to Face Courses | Face to Face Retention | Face to Face Success |
|--------|---------------------|-----------------------|---------------------|--------------------|----------------------|--------------------|----------------------------|------------------------|----------------------|
| 2007SU | 85 | 95.8% | 91.8% | 15 | 97.6% | 94.1% | 100 | 96.0% | 92.0% |
| 2007FA | 276 | 88.9% | 78.4% | 28 | 93.9% | 89.8% | 304 | 89.2% | 79.0% |
| 2008SP | 273 | 87.4% | 76.2% | 26 | 91.7% | 85.9% | 299 | 87.7% | 76.9% |
| 2008SU | 76 | 97.6% | 94.2% | 12 | 100.0% | 95.3% | 88 | 98.1% | 94.5% |
| 2008FA | 287 | 87.4% | 74.3% | 21 | 91.6% | 84.4% | 308 | 87.6% | 74.7% |
| 2009SP | 304 | 88.6% | 76.9% | 22 | 98.0% | 96.1% | 326 | 89.6% | 79.0% |
| 2009SU | 94 | 96.6% | 91.8% | 5 | 100.0% | 100.0% | 99 | 96.7% | 92.2% |
| 2009FA | 290 | 87.8% | 74.4% | 10 | 88.4% | 88.4% | 300 | 87.9% | 74.5% |
| 2010SP | 310 | 91.8% | 81.1% | 16 | 99.3% | 95.7% | 326 | 92.2% | 81.9% |
| 2010SU | 109 | 96.7% | 89.2% | 2 | 100.0% | 100.0% | 111 | 96.7% | 89.5% |
| 2010FA | 312 | 88.4% | 74.5% | 10 | 87.9% | 81.8% | 322 | 88.4% | 74.6% |
| 2011SP | 309 | 89.9% | 76.4% | 13 | 98.8% | 98.0% | 322 | 90.3% | 77.4% |

| Term | Correspondence Courses | Correspondence Retention | Correspondence Success | On-line Courses | On-line Retention | On-line Success |
|--------|------------------------|--------------------------|------------------------|-----------------|-------------------|-----------------|
| 2007SU | 38 | 92.5% | 80.1% | 2 | 90.9% | 54.5% |
| 2007FA | 71 | 71.8% | 53.3% | 4 | 73.2% | 39.0% |
| 2008SP | 54 | 81.4% | 63.2% | 4 | 74.0% | 41.1% |
| 2008SU | 36 | 89.0% | 72.2% | 1 | 85.7% | 71.4% |
| 2008FA | 64 | 83.5% | 65.3% | 7 | 73.6% | 48.1% |
| 2009SP | 71 | 76.5% | 62.4% | 16 | 73.9% | 39.0% |
| 2009SU | 52 | 78.0% | 61.4% | 4 | 86.0% | 72.1% |
| 2009FA | 100 | 76.5% | 53.2% | 12 | 76.3% | 46.2% |
| 2010SP | 86 | 81.9% | 55.1% | 18 | 79.7% | 48.1% |
| 2010SU | 51 | 84.2% | 67.9% | 4 | 81.8% | 71.2% |
| 2010FA | 97 | 78.2% | 58.3% | 13 | 81.9% | 51.5% |
| 2011SP | 112 | 82.8% | 59.6% | 15 | 85.7% | 45.5% |

COURSE OUTCOMES BY MODALITY

STUDENT OUTCOMES BY MODALITY
Academic Year 2007-08 to 2010-11

| Year | Main Campus Courses | Main Campus Retention | Main Campus Success | Off Campus Courses | Off Campus Retention | Off Campus Success | Total Face to Face Courses | Face to Face Retention | Face to Face Success |
|---------|---------------------|-----------------------|---------------------|--------------------|----------------------|--------------------|----------------------------|------------------------|----------------------|
| 2007-08 | 634 | 88.9% | 78.8% | 69 | 93.5% | 88.7% | 703 | 89.2% | 79.4% |
| 2008-09 | 667 | 88.8% | 77.1% | 55 | 97.2% | 93.8% | 722 | 89.6% | 78.7% |
| 2009-10 | 694 | 90.6% | 79.2% | 31 | 98.1% | 95.3% | 725 | 90.9% | 79.8% |
| 2010-11 | 730 | 90.0% | 77.0% | 25 | 96.8% | 95.1% | 755 | 90.2% | 77.5% |

| Term | Correspondence Courses | Correspondence Retention | Correspondence Success | On-line Courses | On-line Retention | On-line Success |
|---------|------------------------|--------------------------|------------------------|-----------------|-------------------|-----------------|
| 2007-08 | 163 | 79.2% | 61.9% | 10 | 74.7% | 41.0% |
| 2008-09 | 171 | 81.7% | 65.5% | 24 | 74.0% | 42.3% |
| 2009-10 | 238 | 78.8% | 55.7% | 34 | 78.9% | 49.6% |
| 2010-11 | 260 | 81.3% | 60.6% | 32 | 83.8% | 50.8% |

CATEGORICAL PROGRAM STUDENTS

NUMBER AND PERCENTAGE OF STUDENTS IN CATEGORICAL PROGRAMS 2007-08 to 2010-11

Categorical Programs (unduplicated)

| 2007-08 | Headcount | EOPS | % | CARE | % | DSPS* | % | CalWORKs | % |
|----------------|------------------|-------------|--------------|-------------|-------------|--------------|-------------|-----------------|-------------|
| Female | 1,479 | 209 | 14.1% | 38 | 2.6% | - | 0.0% | 94 | 6.4% |
| Male | 1,887 | 307 | 16.3% | 2 | 0.1% | - | 0.0% | 17 | 0.9% |
| Unknown | 8 | 1 | 12.5% | - | 0.0% | - | 0.0% | - | 0.0% |
| Total | 3,374 | 517 | 15.3% | 40 | 1.2% | 0 | 0.0% | 111 | 3.3% |
| 2008-09 | Headcount | EOPS | % | CARE | % | DSPS | % | CalWORKs | % |
| Female | 1,495 | 210 | 14.0% | 29 | 1.9% | 118 | 7.9% | 78 | 5.2% |
| Male | 2,638 | 232 | 8.8% | 1 | 0.0% | 81 | 3.1% | 17 | 0.6% |
| Unknown | 13 | 1 | 7.7% | - | 0.0% | - | 0.0% | 1 | 7.7% |
| Total | 4,146 | 443 | 10.7% | 30 | 0.7% | 199 | 4.8% | 96 | 2.3% |
| 2009-10 | Headcount | EOPS | % | CARE | % | DSPS | % | CalWORKs | % |
| Female | 1,529 | 157 | 10.3% | 18 | 1.2% | 134 | 8.8% | 81 | 5.3% |
| Male | 3,581 | 93 | 2.6% | 3 | 0.1% | 83 | 2.3% | 26 | 0.7% |
| Unknown | 5 | 1 | 20.0% | - | 0.0% | - | 0.0% | - | 0.0% |
| Total | 5,115 | 251 | 4.9% | 21 | 0.4% | 217 | 4.2% | 107 | 2.1% |
| 2010-11 | Headcount | EOPS | % | CARE | % | DSPS | % | CalWORKs | % |
| Female | 1,475 | 151 | 10.2% | 21 | 1.4% | 118 | 8.0% | 82 | 5.6% |
| Male | 4,862 | 103 | 2.1% | 2 | 0.0% | 79 | 1.6% | 18 | 0.4% |
| Total | 6,337 | 254 | 4.0% | 23 | 0.4% | 197 | 3.1% | 100 | 1.6% |

*NOTE: DSPS information not available for 07/08

ATHLETES BY SPORT

2007-08 to 2010-11

| 2007-08 | Students |
|-----------------------------|-----------------|
| Varsity Baseball | 37 |
| Varsity Wrestling | 23 |
| Men's Varsity Soccer | 15 |
| Women's Varsity Soccer | 14 |
| Women's Varsity Softball | 14 |
| Women's Varsity Volleyball | 14 |
| Women's Varsity Basketball | 13 |
| Intercollegiate Men's Rodeo | 11 |
| Men's Varsity Basketball | 11 |
| Total (unduplicated) | 151 |

| 2008-09 | Students |
|-----------------------------|-----------------|
| Varsity Wrestling | 29 |
| Varsity Baseball | 28 |
| Intercollegiate Rodeo | 17 |
| Women's Varsity Basketball | 15 |
| Men's Varsity Basketball | 14 |
| Women's Varsity Softball | 10 |
| Women's Varsity Volleyball | 9 |
| Total (unduplicated) | 118 |

| 2009-10 | Students |
|-----------------------------|-----------------|
| Rodeo Team Roping | 38 |
| Intercollegiate Rodeo | 21 |
| Varsity Baseball | 20 |
| Men's Varsity Basketball | 18 |
| Women's Varsity Softball | 15 |
| Varsity Wrestling | 14 |
| Women's Varsity Soccer | 13 |
| Women's Varsity Volleyball | 9 |
| Women's Varsity Basketball | 8 |
| Total (unduplicated) | 155 |

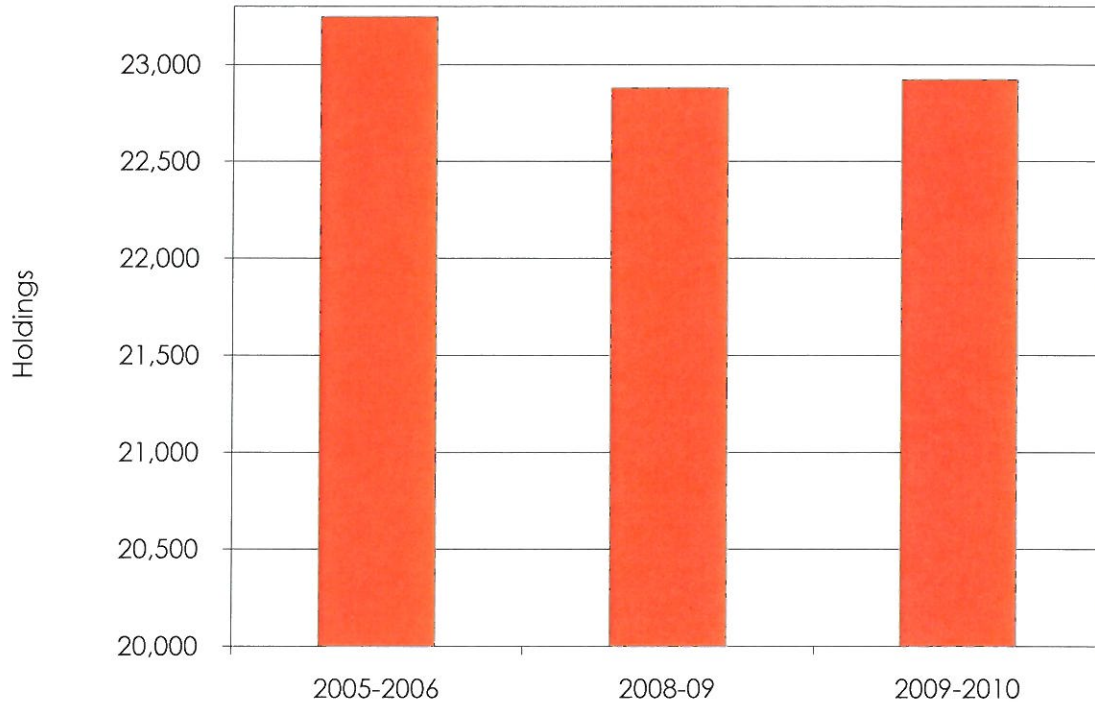
| 2010-11 | Students |
|-----------------------------|-----------------|
| Men's Varsity Soccer | 28 |
| Varsity Baseball | 22 |
| Intercollegiate Rodeo | 20 |
| Women's Varsity Softball | 16 |
| Men's Varsity Basketball | 15 |
| Women's Varsity Soccer | 15 |
| Women's Varsity Basketball | 13 |
| Women's Varsity Volleyball | 11 |
| Rodeo Team Roping | 10 |
| Varsity Wrestling | 9 |
| Total (unduplicated) | 154 |

LIBRARY

LIBRARIES

LIBRARY HOLDINGS

Fiscal Year 2003-2004 to 2009-2010



LCCD Library Holdings

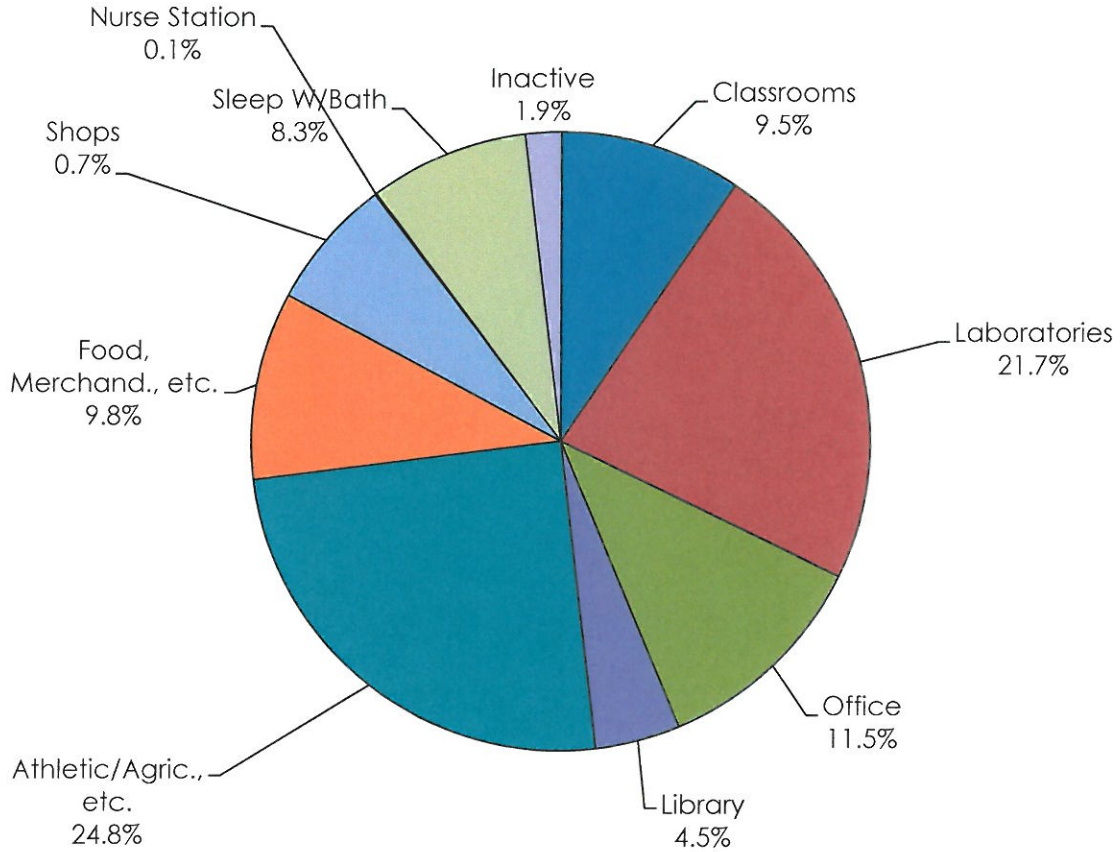
| | Baseline 2005-2006 | 2008-09 | 2009-2010 |
|--|-----------------------|---------|-----------|
| Holdings* | 23,245 | 22,879 | 22,921 |
| Fiscal Year Percent Change from baseline 2005-2006 | | -1.57% | -1.39% |
| Number of current serials | | | |
| Number of electronic books | | 19,625 | 20,662 |
| Library Services 2007-2008 | | | |
| Number of reference transactions | | 78 | 64 |
| Total number of filled requests received from other libraries or provide | | 60 | 51 |
| Participants who received Library Instruction | | 339 | 199 |
| Number of Items checked out from LCC Campus Library | | 2,470 | 3,707 |

Source: LCCD Library

PHYSICAL FACILITIES

PHYSICAL FACILITIES

NET SQUARE FOOTAGE BY TYPE



| | Net Square Feet | Percent of Total |
|---------------------------|------------------------|-------------------------|
| 100 Classrooms | 16,362 | 9.5% |
| 200 Laboratories | 38,993 | 22.7% |
| 300 Office | 19,825 | 11.5% |
| 400 Library | 7,659 | 4.5% |
| 500 Athletic/Agric., etc. | 42,754 | 24.8% |
| 600 Food, Merchand., etc. | 16,898 | 9.8% |
| 700 Shops etc. | 11,796 | 6.9% |
| 800 Nurse Station | 162 | 0.1% |
| 900 Sleep W/Bath | 14,336 | 8.3% |
| 000 Inactive | 3,266 | 1.9% |
| Total | 172,051 | 100% |

Source: California Community Colleges - Fusion - Report 17
Space Inventory Report

ANNUAL CAMPUS SECURITY REPORT

| OFFENSE | Year | On campus Property | Residential Housing | Public Property |
|--|------|-----------------------|------------------------|--------------------|
| Murder/Non-Negligent Manslaughter | 2008 | 0 | 0 | 0 |
| | 2009 | 0 | 0 | 0 |
| | 2010 | 0 | 0 | 0 |
| Negligent Manslaughter | 2008 | 0 | 0 | 0 |
| | 2009 | 0 | 0 | 0 |
| | 2010 | 0 | 0 | 0 |
| Sex Offenses, Forcible | 2008 | 0 | 0 | 0 |
| | 2009 | 0 | 0 | 0 |
| | 2010 | 0 | 0 | 0 |
| Sex Offenses, Non-Forcible | 2008 | 0 | 0 | 0 |
| | 2009 | 0 | 0 | 0 |
| | 2010 | 0 | 0 | 0 |
| Robbery | 2008 | 0 | 0 | 0 |
| | 2009 | 0 | 0 | 0 |
| | 2010 | 0 | 0 | 0 |
| Aggravated Assault | 2008 | 0 | 0 | 0 |
| | 2009 | 0 | 0 | 0 |
| | 2010 | 0 | 0 | 0 |
| Burglary | 2008 | 0 | 2 | 0 |
| | 2009 | 0 | 1 | 0 |
| | 2010 | 3 | 0 | 0 |
| Motor Vehicle Theft | 2008 | 0 | 0 | 0 |
| | 2009 | 1 | 0 | 0 |
| | 2010 | 0 | 0 | 0 |
| Arson | 2008 | 0 | 0 | 0 |
| | 2009 | 1 | 0 | 0 |
| | 2010 | 0 | 0 | 0 |
| Arrests for Illegal Weapons Possessions | 2008 | 0 | 0 | 0 |
| | 2009 | 0 | 0 | 0 |
| | 2010 | 0 | 0 | 0 |
| Arrests for Drug Law Violations | 2008 | 0 | 0 | 0 |
| | 2009 | 0 | 0 | 0 |
| | 2010 | 0 | 0 | 0 |
| Arrests for Liquor Law Violations | 2008 | 0 | 1 | 0 |
| | 2009 | 0 | 0 | 0 |
| | 2010 | 0 | 0 | 0 |
| Persons Referred for disciplinary action for Illegal Weapons | 2008 | 0 | 0 | 0 |
| | 2009 | 0 | 1 | 0 |
| | 2010 | 0 | 0 | 0 |
| Persons Referred for disciplinary action for Drug Law Violations | 2008 | 0 | 4 | 0 |
| | 2009 | 0 | 3 | 0 |
| | 2010 | 0 | 0 | 0 |
| Persons Referred for disciplinary action for Liquor Law Violations | 2008 | 0 | 5 | 0 |
| | 2009 | 0 | 23 | 0 |
| | 2010 | 0 | 1 | 0 |

*No Hate Crimes were reported in 2005, 2006, 2007, 2008, 2009, 2010

OUTREACH

REGIONAL HIGH SCHOOL GRADUATES

STUDENTS AND AWARDS 2008-09 to 2010-11

Data for Local High School Students (unduplicated)

| 2008-09 | Students | % | CA | % | AA/AS | % |
|---|--------------|--------------|-----------|-------------|-----------|-------------|
| Almanor High School (Chester) | 2 | 50.0% | - | 0.0% | - | 0.0% |
| Big Valley High School (Bieber) | 33 | 9.1% | - | 0.0% | - | 0.0% |
| Chester Jr-Sr Hs Career Ctr (Chester) | 45 | 15.6% | 1 | 2.2% | 1 | 2.2% |
| Cornerstone Christian School (Susanville) | 1 | 0.0% | - | 0.0% | - | 0.0% |
| Credence High School (Susanville) | 58 | 29.3% | - | 0.0% | 1 | 1.7% |
| Greenville High School (Greenville) | 30 | 16.7% | - | 0.0% | - | 0.0% |
| Herlong High School (Herlong) | 36 | 44.4% | 1 | 2.8% | 1 | 2.8% |
| Indian Valley High School (Greenville) | 1 | 0.0% | - | 0.0% | - | 0.0% |
| Lassen High School (Susanville) | 724 | 27.9% | 22 | 3.0% | 23 | 3.2% |
| Plumas Charter School (Quincy) | 3 | 33.3% | 1 | 33.3% | 1 | 33.3% |
| Plumas Christian School (Quincy) | 1 | 0.0% | - | 0.0% | - | 0.0% |
| Portola Jr-Sr High School (Portola) | 6 | 16.7% | - | 0.0% | - | 0.0% |
| Quincy Senior High School (Quincy) | 18 | 5.6% | - | 0.0% | - | 0.0% |
| Rocky Ridge High (Susanville) | 1 | 0.0% | - | 0.0% | - | 0.0% |
| Westwood High School (Westwood) | 82 | 29.3% | 2 | 2.4% | 2 | 2.4% |
| Total | 1,041 | 26.7% | 27 | 2.6% | 29 | 2.8% |

| 2009-10 | Students | % | CA | % | AA/AS | % |
|---|--------------|--------------|-----------|-------------|-----------|-------------|
| Almanor High School (Chester) | 5 | 20.0% | - | 0.0% | - | 0.0% |
| Big Valley High School (Bieber) | 39 | 7.7% | - | 0.0% | - | 0.0% |
| Chester Jr-Sr Hs Career Ctr (Chester) | 49 | 20.4% | 1 | 2.0% | 1 | 2.0% |
| Cornerstone Christian School (Susanville) | 3 | 33.3% | - | 0.0% | - | 0.0% |
| Credence High School (Susanville) | 37 | 51.4% | 2 | 5.4% | 1 | 2.7% |
| Diamond Mountain Charter High School (Susanville) | 4 | 0.0% | - | 0.0% | - | 0.0% |
| Greenville High School (Greenville) | 22 | 18.2% | - | 0.0% | - | 0.0% |
| Herlong High School (Herlong) | 45 | 35.6% | 1 | 2.2% | 1 | 2.2% |
| Lassen High School (Susanville) | 739 | 32.5% | 30 | 4.1% | 37 | 5.0% |
| Plumas Charter School (Quincy) | 7 | 28.6% | - | 0.0% | - | 0.0% |
| Portola Jr-Sr High School (Portola) | 14 | 28.6% | - | 0.0% | - | 0.0% |
| Quincy Senior High School (Quincy) | 23 | 8.7% | - | 0.0% | - | 0.0% |
| Rocky Ridge High (Susanville) | 7 | 0.0% | - | 0.0% | - | 0.0% |
| Westwood High School (Westwood) | 107 | 40.2% | 1 | 0.9% | 1 | 0.9% |
| Total | 1,101 | 31.3% | 35 | 3.2% | 41 | 3.7% |
| Total | 961 | 31.1% | 29 | 3.0% | 31 | 3.2% |

REGIONAL HIGH SCHOOL GRADUATES (CONT.)

STUDENTS AND AWARDS 2008-09 to 2010-11

| 2010-11 | Students | % | CA | % | AA/AS | % |
|---|------------|--------------|-----------|-------------|-----------|-------------|
| 3 Oaks Academy (Janesville) | 1 | 0.0% | - | 0.0% | - | 0.0% |
| Almanor High School (Chester) | 5 | 20.0% | - | 0.0% | - | 0.0% |
| Bernard-Mariposa Private School (Janesville) | 1 | 0.0% | - | 0.0% | - | 0.0% |
| Big Valley High School (Bieber) | 20 | 15.0% | - | 0.0% | - | 0.0% |
| Chester Jr-Sr Hs Career Ctr (Chester) | 45 | 17.8% | - | 0.0% | - | 0.0% |
| Credence High School (Susanville) | 37 | 45.9% | 1 | 2.7% | 1 | 2.7% |
| Diamond Mountain Charter High School (Susanville) | 6 | 0.0% | - | 0.0% | - | 0.0% |
| Greenville High School (Greenville) | 11 | 45.5% | - | 0.0% | - | 0.0% |
| Herlong High School (Herlong) | 35 | 20.0% | - | 0.0% | - | 0.0% |
| Lassen High School (Susanville) | 642 | 32.7% | 26 | 4.0% | 27 | 4.2% |
| Plumas Charter School (Quincy) | 4 | 25.0% | - | 0.0% | - | 0.0% |
| Portola Jr-Sr High School (Portola) | 10 | 40.0% | - | 0.0% | - | 0.0% |
| Quincy Senior High School (Quincy) | 21 | 9.5% | - | 0.0% | - | 0.0% |
| Rocky Ridge High (Susanville) | 23 | 0.0% | - | 0.0% | - | 0.0% |
| Westwood High School (Westwood) | 100 | 41.0% | 2 | 2.0% | 3 | 3.0% |
| Total | 961 | 31.1% | 29 | 3.0% | 31 | 3.2% |