



# FACT BOOK

LASSEN COMMUNITY COLLEGE

*Serving the Future*





# FACT BOOK

## TABLE OF CONTENTS

<b>GENERAL INFORMATION</b>	<b>3</b>
Lassen Community College Profile and Student Snapshot	4
History of Lassen Community College, Accreditation and Vision	5
LCC Mission, Values, Strategic Goals and Institutional Student Learning Outcomes Programs	6
	7
<b>LCCD Organizational Charts</b>	<b>10</b>
LCCD Board of Trustees	11
President/Superintendent's Office	12
Academic Services	13
Administrative Services	14
Student Services	15
<b>STUDENTS</b>	<b>15</b>
Total Enrollment: Full-Time, Part-Time and FTE/Fall 2007 to Fall 2011	16
Student Outcomes by Gender and BOGG/Fall 2007 to Fall 2011	17
Student Outcomes by Age Group/Fall 2007 to Fall 2011	18
Student Outcomes by Enrollment Status/Fall 2007 to Fall 2011	19
Total Enrollment: Full-Time, Part-Time and FTE/Spring 2008 to Spring 2012	20
Student Outcomes by Gender and BOGG/Spring 2008 and Spring 2012	21
Student Outcomes by Age Group/ Spring 2008 and Spring 2012	22
Student Outcomes by Enrollment Status/Spring 2008 and Spring 2012	23
Total Enrollment: Full-Time, Part-Time and FTES/Summer 2007 to Summer 2011	24
Student Outcomes by Gender/Summer 2007 to Summer 2011	25
Student Outcomes by Age Group/Summer 2007 to Summer 2011	26
Student Outcomes by Enrollment Status/ Summer 2007 to Summer 2011	27
Student Financial Aid Fiscal Year 2003-2004 to 2010-2011	28
Enrollment Fees/Tuition by Residence Status	29
Enrollment by Term: Status	30
Enrollment by Term: Resident Status	31
Enrollment by Term: Gender	32
Enrollment by Term: Ethnicity	33
Enrollment by Term: Age Group, Average Age	34
FTES by Subject: Three Year Comparison	35
<b>AWARDS</b>	<b>37</b>
Degrees/Certificates Awarded AY 2004-2005 to 2011-2012	38
Awards by Award Level	39
<b>SECTIONS</b>	<b>40</b>
Sections by Modality and Day/Evening for AY 2007-2008 to 2011-2012	41
Sections: Days by Academic Year	42
Sections by Modality/Fall 2007 to Spring 2012	43
<b>BASIC SKILLS</b>	<b>44</b>
Basic Skills Total Enrollment	45
Basic Skills Assessment Fall 2007-2011	46

# FACT BOOK

## TABLE OF CONTENTS

<b>LCCD EMPLOYEES</b>	<b>47</b>
Employee Job Category by Position	48
LCCD Employees: Gender, Age, Years of Service Fall	49
<b>REVENUES AND EXPENDITURES</b>	<b>50</b>
Actual Revenues: Restricted and Unrestricted	51
Revenue by Source	52
Actual Expenditures: Restricted and Unrestricted	53
Expenditure by Category	54
<b>PROGRAM SPECIFIC DATA</b>	<b>55</b>
Fall Outcomes by Modality	56
Spring Outcomes by Modality	57
Summer Outcomes by Modality	58
Categorical Programs - Student Numbers	59
Athletes by Sport	60
<b>LIBRARY</b>	<b>61</b>
Library Holdings and Services	62
<b>PHYSICAL FACILITIES</b>	<b>63</b>
Net Square Footage by Type	64
Annual Campus Security Report	65
<b>OUTREACH</b>	<b>66</b>
Regional High School Graduates - Students and Awards 2008-09 to 2011-12	67
General Services	65

# GENERAL INFORMATION



## GENERAL INFORMATION

---

---

### PROFILE

Lassen Community College (LCC), in the high mountain lake country of northeastern California, looks out over Susanville to the Sierra Nevada Mountains. With a dedicated faculty and an average class size of 20 students, LCC offers over 60 degree and certificate programs in arts and sciences, in business, and in vocational fields. LCC is committed to helping students transfer to four-year colleges and universities. The College offers basic skills instruction, evening and weekend classes, support services that help students succeed at all levels, adult non-credit education, intercollegiate athletics, and community service courses and programs.

The College serves inmate populations at state and federal prison facilities located in the area. The college-operated Coppervale Ski Hill is just 14 miles from campus; the College's Eagle Lake Marina is 20 miles away. Lassen College is truly a community college - open to everyone.

Funding for LCC's programs and most construction and equipment comes from California state appropriations.

Tuition and fees are moderate, and financial aid is available to those who qualify.

LCC's academic year is divided into two primary terms: fall (begins in August), spring (begins in January), and a summer term (begins in May). Short sessions, non-traditional schedules and correspondence delivery are available for many programs and courses.

---

---

### STUDENT SNAPSHOT - Fall 2011

Official headcount in Fall 2011 is 2,503.

Students enrolled full-time represent 23.8 percent of the student population.

Students coming from California represent 96.1 percent of the student population.

Males are a majority at LCC, accounting for 72.3 percent of the Fall 2011 enrollment.

Minority students represent 49 percent of the college's enrollment.

The average age of the total student body during Fall 2011 is 32.4 years of age.

---

---

## GENERAL INFORMATION

---

---

### HISTORY OF LASSEN COMMUNITY COLLEGE

The forerunner of Lassen Community College began on May 4, 1925, when the Junior College department of the Lassen Union High School District was established and began conducting classes on the Lassen High School Campus.

A separate facility was created in 1941 with the remodeling of a Main Street garage into a classroom building. In 1945, because of increasing enrollment, a new building was built adjacent to the high school. The modern era of LCC began in March 1965 with the establishment of the Lassen Community College District and the separation from the high school district. A separate Board of Trustees was elected and planning began for a new campus.

The new campus, located on Highway 139, today consists of 165 acres and 42 structures, including 19 main buildings. The new campus dedicated in May, 1973, includes classrooms, laboratories, and offices, LCC has a dormitory with a capacity of 124, a library, college union, computer rooms, a large gymnasium and outdoor recreation facilities.

Lassen Community College is located in Susanville in the high mountain lake country of northeastern California. The campus looks out over the city to Diamond Mountain and the Sierra Nevada Mountains. Eagle Lake, the third largest lake wholly contained in California, is only 20 miles away. The college-operated Coppervale Ski Hill is just 14 miles from the campus.

---

---

### INSTITUTIONAL ACCREDITATION

Lassen Community College is accredited by Western Association of Schools and Colleges (WASC) through the Accrediting Commission for Community and Junior Colleges. WASC is recognized by the California Post Secondary Education Commission and the U.S. Department of Education.

LCC is accredited to award certificates and associate in science (AS) and associate in arts (AA) degrees.

---

---

### LASSEN COMMUNITY COLLEGE VISION

#### **The Governing Board's Vision for Lassen Community College is to:**

- Be the **Academic Leader** by ensuring Quality and Student Success
- Be the **Educational Leader** by expanding Outreach and Student Access
- Be a **Trusted Steward** by providing capable Leadership and Accountability
- Be the **Economic and Workforce Development Leader** for the Community
- Be the **Cultural Leader** in the Community
- Be the **Civic and Social Leader** in the Community
- Become a **model for a highly efficient self-sustaining rural community college**



# GENERAL INFORMATION

## MISSION, VALUES, GOALS AND STUDENT LEARNING OUTCOMES

### LCC- KEEPING AN EYE ON THE FUTURE

#### MISSION

Lassen Community College provides outstanding programs for all pursuing higher education goals. The core programs offer a wide range of educational opportunities including transfer degrees and certificates, economic and workforce development and basic skills instruction. The college serves students, both on campus and in outreach areas in its effort to build intellectual growth, human perspective and economic potential.

#### VALUES

Educational Excellence, Student Focus, Honesty/Integrity, Student Success, Dignity/Respect

#### STRATEGIC GOALS

- 1 Student Success:** Enable students' attainment of educational goals, including degrees and certificates, transfer, job placement and advancement, basic skills and lifelong learning.
- 2 Responsive Curricula:** Develop and implement curricula that are responsive to changing student learning needs, to changing economic and workforce development needs, and to community cultural, social and civic interests.
- 3 Student Access:** Provide a college environment that reaches-out-to and supports students, minimizes barriers, increases opportunity, and increases success through access and retention.
- 4 Resource Development:** Develop and manage human, physical, technological and financial resources to promote growth and to effectively support the learning environment.
- 5 Organizational Effectiveness:** Enhance organizational function in leadership, interaction, planning, and accountability to ensure responsive stewardship of public trust and resources.
- 6 Community Leadership:** Provide an environment that supports, partners and leads in the development and implementation of community initiatives.

#### INSTITUTIONAL STUDENT LEARNING OUTCOMES

- 1 Communication:** Ability to listen and read with comprehension and the ability to write and speak effectively
- 2 Critical Thinking:** Ability to analyze a situation, identify and research a problem, propose a solution or desired outcome, implement a plan to address the problem, evaluate progress and adjust the plan as appropriate to arrive at the solution or desired outcome
- 3 Life Long Learning:** Ability to engage in independent acquisition of knowledge; ability to access information including use of current technology; ability to use the Internet and/or library to access and analyze information for relevance and accuracy; ability to navigate systems
- 4 Personal/Interpersonal Responsibility:** Ability to develop and apply strategies to set realistic goals for personal, educational, career, and community development; ability to apply standards of personal and professional integrity; ability to cooperate with others in a collaborative environment for accomplishment of goals; ability to interact successfully with other cultures

# GENERAL INFORMATION

## LCCD PROGRAMS

2011-2012

### Administration of Justice/Correctional Science

Associate in Science Degree in Administrations of Justice for Transfer  
Associate in Arts Degree in Administration of Justice  
Certificate of Achievement in Administration of Justice  
Certificate of Accomplishment in Administration of Justice Reserve Office Training  
Level III, Safety & Security Personnel  
Associate in Science Degree in Correctional Science  
Certificate of Achievement in Correctional Science



### Agriculture

Associate in Arts Degree University Studies: Emphasis in Agriculture Sciences  
Associate in Science Degree in Agriculture Science and Technology  
Certificate of Achievement in Agriculture Science and Technology  
Certificate of Accomplishment in Animal Science  
Certificate of Accomplishment in Horsemanship  
Certificate of Accomplishment in Horticulture  
Certificate of Accomplishment in Agriculture Business

### Automotive Technology

Associate in Science Degree in Automotive Technology  
Certificate of Achievement in General Mechanics  
Certificate of Achievement in Tune-Up



### Business

Associate in Science in Business Administration for Transfer  
Associate in Science Degree in Accounting  
Associate in Science Degree in Office Administrative Assistant  
Certificate of Achievement in Office Administrative Assistant



### Child Development

Associate in Science Degree in Child Development for Transfer  
Associate in Arts Degree in Child Development  
Certificate of Achievement in Child Development  
Certificate of Achievement in Child Development Associate Teacher



### Fine Art/Humanities

Associate in Arts Degree in Art History for Transfer  
Associate in Arts Degree in Studio Art for Transfer  
Certificate of Accomplishment in Graphic Design  
Associate in Arts Degree University Studies: Emphasis in Humanities





# GENERAL INFORMATION

---

## LCCD PROGRAMS

2011-2012

### **Fire Technology**

Associate in Science Degree in Fire Technology  
Certificate of Achievement in Fire Technology

### **Gunsmithing**

Associate in Science Degree in Firearms Repair  
Associate in Science Degree in General Gunsmithing  
Certificate of Accomplishment in Gunsmith Machinist and Metal Finishing  
Certificate of Accomplishment in Long Guns  
Certificate of Accomplishment in Pistolsmith  
Certificate of Accomplishment in Riflesmith  
Certificate of Achievement Firearms Repair  
Certificate of Achievement General Gunsmithing

### **Human Services**

Associate in Science Degree in Drug and Alcohol Paraprofessional  
Associate in Science Degree in Human Services  
Certificate of Achievement in Drug and Alcohol Paraprofessional  
Certificate of Achievement in Human Services

### **Social Science**

Associate in Arts Degree University Studies: Emphasis in Social Sciences  
Associate in Arts Degree General Studies: Emphasis in Social Sciences  
California State University General Education Certificate of Achievement  
Intersegmental General Education Transfer Curriculum Certificate of Achievement

### **Journalism**

Associate in Science Degree in Journalism  
Certificate of Achievement in Journalism

### **Mathematics/Natural Science**

Associate in Arts Degree University Studies: Emphasis in Allied Health  
Associate in Science Degree University Studies: Biological Science Major Preparation  
Associate in Science Degree University Studies: Emphasis in Mathematics/Physical Science  
Associate in Arts Degree University Studies: Emphasis in Natural Sciences  
Associate in Arts Degree General Studies: Emphasis in Natural Sciences

### **Nursing**

Associate in Science Degree in Vocational Nursing  
Certificate of Achievement in Vocation Nursing

# GENERAL INFORMATION

---

## LCCD PROGRAMS

2011-2012

### Physical Education

Associate in Arts Degree University Studies: Emphasis in Physical Education

Associate in Arts Degree General Studies: Emphasis in Physical Education

### Welding Technology

Associate in Science Degree in Welding Technology

Two-Year Certificate of Achievement in Welding Technology

One-Year Certificate of Achievement in Welding Technology

Certificate of Accomplishment in Welding Technology

### Special Instructional Programs

Basic Skills (including English as a Second Language)

Developmental Studies

Work Experience

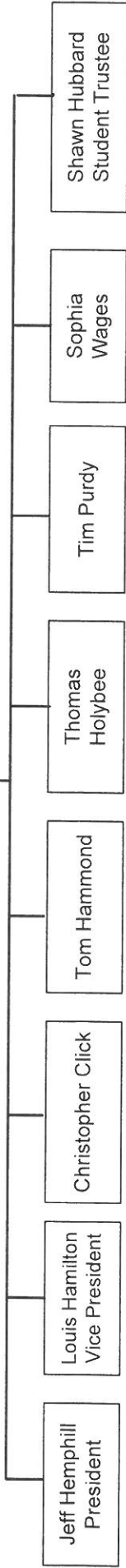


LCCD  
ORGANIZATIONAL CHARTS

Last Edited  
2011-2012  
3/12/12

LASSEN COMMUNITY COLLEGE  
DISTRICT  
BOARD OF TRUSTEES

Secretary to the Board  
Superintendent/President  
Bill Studt, Interim



2011-2012  
3/12/12

LASSEN COMMUNITY COLLEGE DISTRICT  
BOARD OF TRUSTEES

Interim Superintendent/President  
Bill Studd

Executive Assistant  
Julie Johnston

PIO/PR

Foundation

Foundation Assistant

Accreditation Liaison  
Sue Mouck

Consultation Council Chair  
Sue Mouck

Vice President Academic Services  
Vacant

Dean of Academic Services  
Dr. Kayleigh Carabajal

- Athletic Director
- Fire Science Director
- POST Program Director
- Career & Technical Education/  
Physical Education
- Humanities/Social Science
- Business/The Sciences
- Math/English

- Institutional Research
- Information Technology
- Planning and Reporting
- Grant Development
- Distance Education/  
Correspondence
- Library
- Learning Center
- Basic Skills
- Contract Ed.  
Workforce Development
- Community Service

Dean of Student Services  
Cary Templeton

- Marketing & Advertising
- Counseling, Matriculation & Assessment
- Admissions & Records
- Financial Aid
- EOPS
- DSPS
- CalWorks
- Student Recruitment & Outreach
- Student Health Services
- Student Life
- Kinship Care
- Independent Living Program
- Child Development

Human Resources

- HR Manager  
Vickie Ramsey
- HR Tech  
Susie Hart

Dean of Administrative Services  
Dave Clausen

- Business Office Supervisor/  
Comptroller  
Terry Bartley
- Auxiliary Services  
Bookstore Manager  
Coppervale Manager
- Maintenance/  
Custodial  
Director  
Eric Rubelsson

**LEGEND**

- Program
- Classified Administrator
- Classified
- Confidential
- Educational Administrator
- Management
- Faculty
- Adjunct Faculty



Last Edited  
2011-2012  
3/12/12

GSS/NRA Coor 49%  
Kelton Freitas

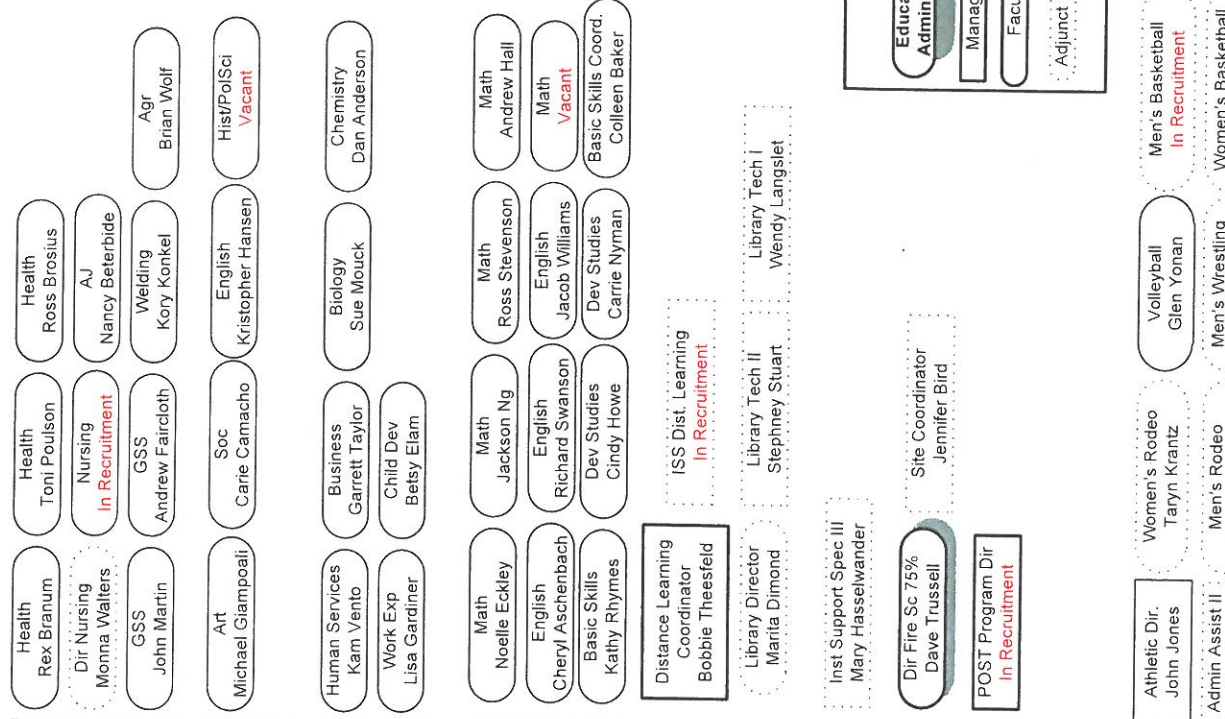
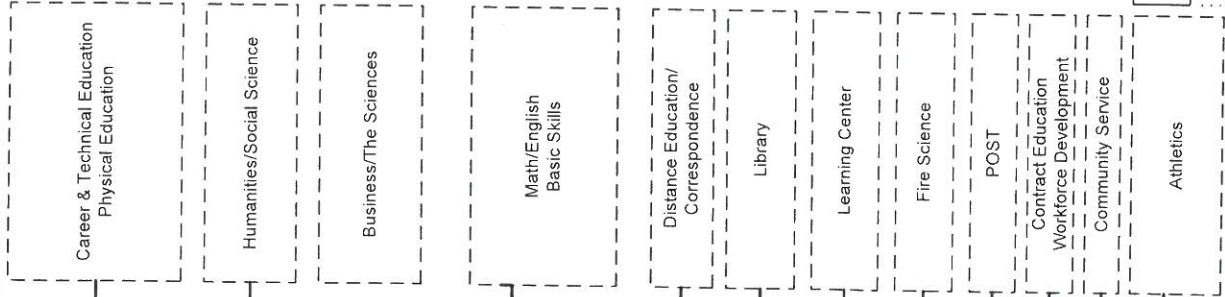
Vice President of Academic Services  
Vacant

Dean of Academic Services  
Dr. Kayleigh Carabajal

Executive Assistant I  
Fran Oberg

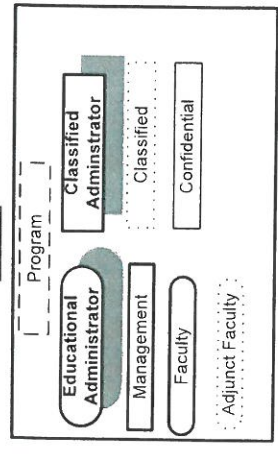
Admin Assistant III  
In Recruitment

Admin Assistant III  
In Recruitment



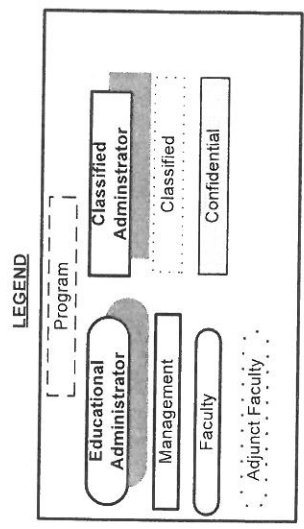
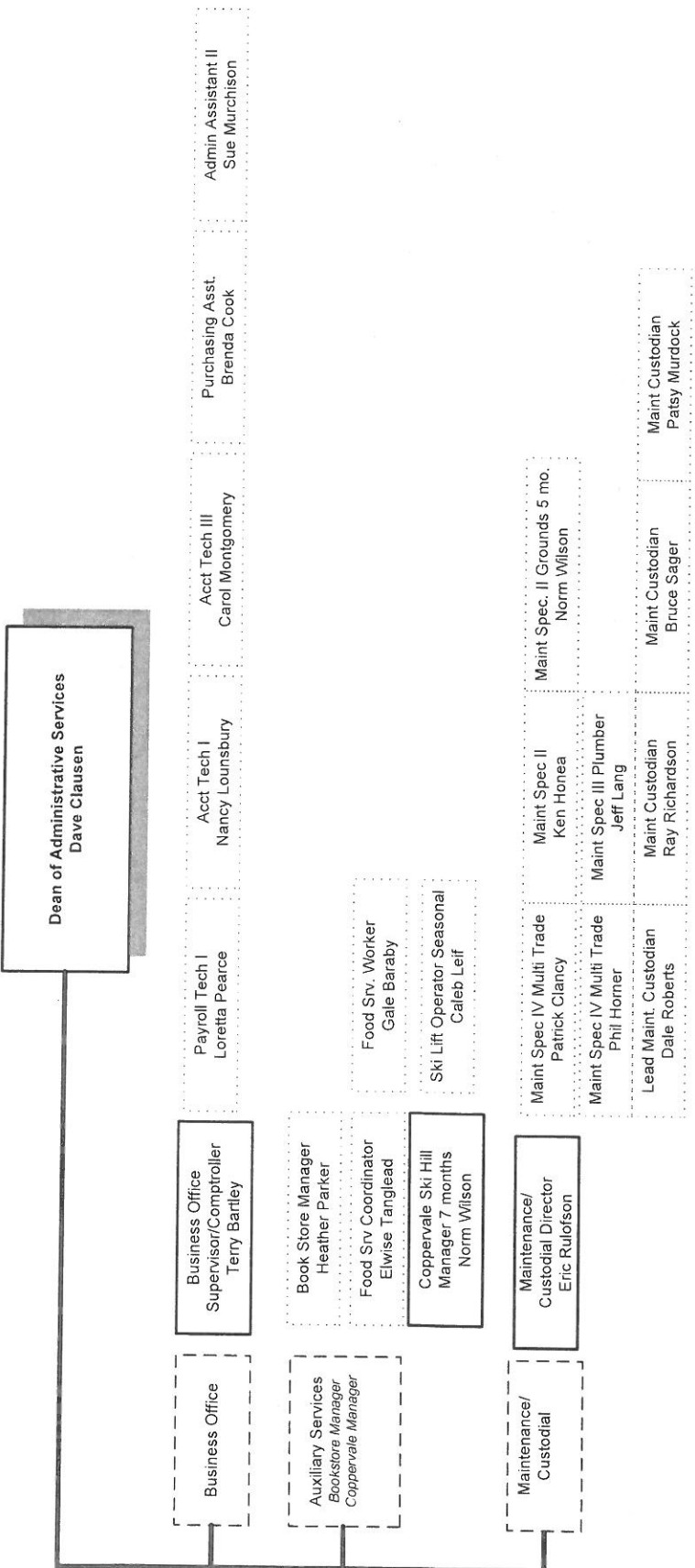
- Inst Sppt Spec I DSPS  
Julie Kerby
- Inst Sppt Spec I Math/Science  
Crystal Baker
- Inst Sppt Spec I Basic Skills  
Patrick Walton
- Inst Sppt Spec I Nur 26.7%  
Caryn Nobles
- Inst Sppt Spec I Auto 53.4%  
Rocky Kotaro
- Inst Sppt Spec I WT 46.6%  
Rocky Kotaro
- Inst Sppt Spec I GSS 53.4%  
Justin Deal
- Inst Asst II Agr 53.4%  
Mike Bartley

LEGEND

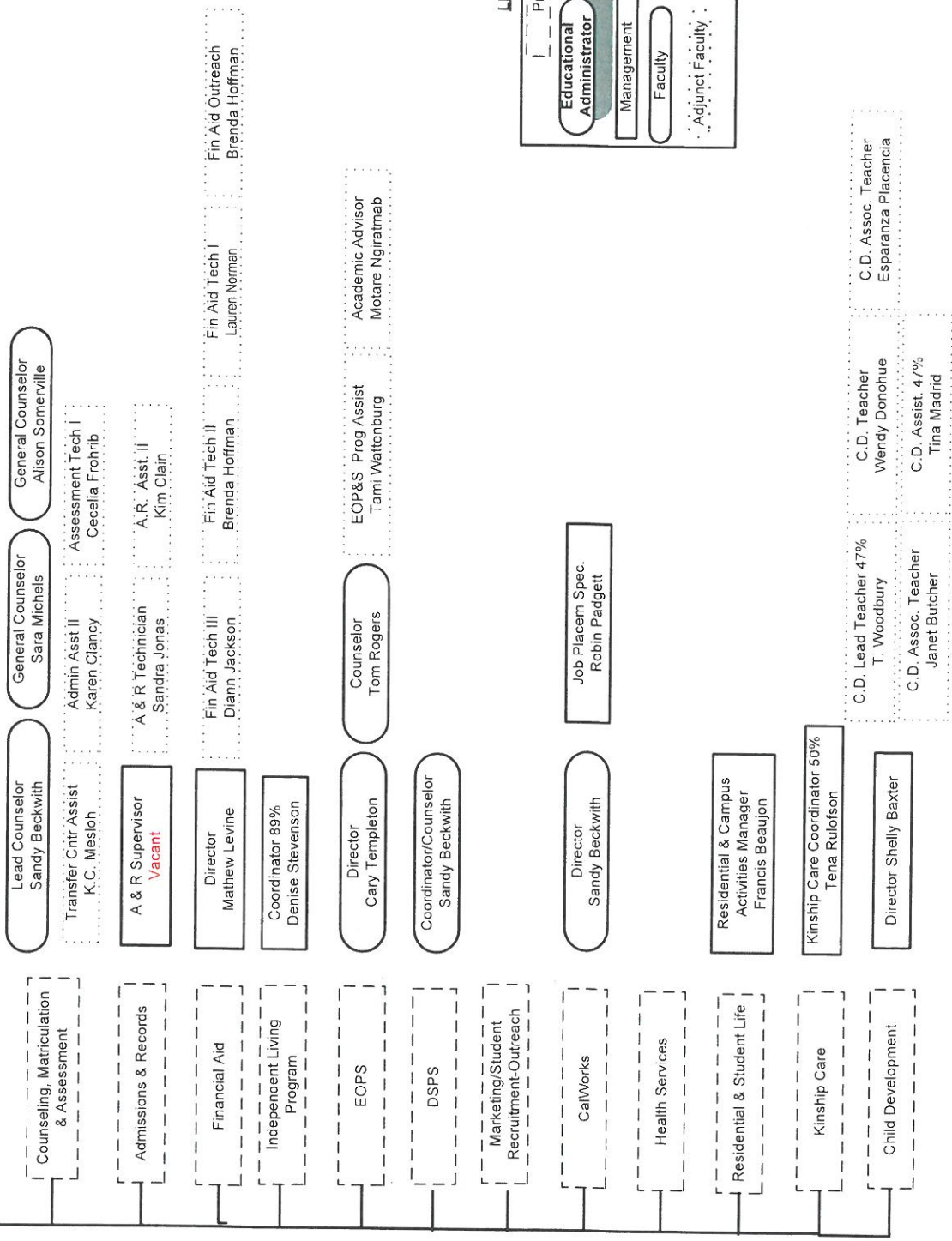


- Athletic Dir. John Jones
- Admin Assist II Heather DelCarlo
- Women's Rodeo Taryn Krantz
- Men's Rodeo Colby Camacho
- Volleyball Glen Yonan
- Men's Wrestling Dusty Vaughn
- Women's Basketball Dorinda Shaffer
- Men's Basketball Frank Avilla
- Women's Softball Glen Yonan
- Men's Soccer Ben Wade
- Women's Soccer John Roy

- Data Systems Analyst  
Janna Sandahl
- Info Tech Spec. II Elaine Theobald
- Info Tech Spec. II Logan Merchant
- Info Tech Spec. II Jacob Freitas



Dean Student Services  
Cary Templeton



**LEGEND**

- Program
- Educational Administrator
- Classified Administrator
- Management
- Classified
- Faculty
- Confidential
- Adjunct Faculty

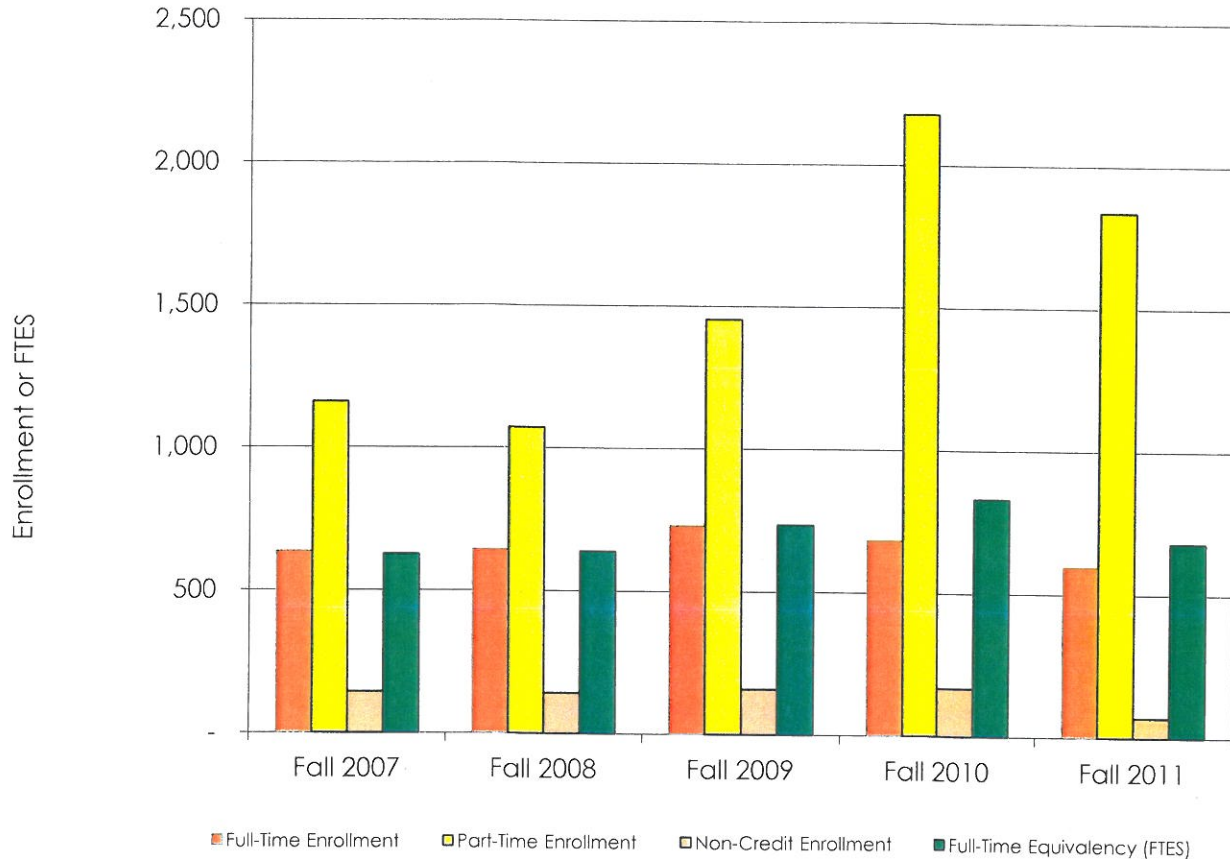


# STUDENTS

# STUDENTS

TOTAL ENROLLMENT: FULL-TIME, PART-TIME, NON-CREDIT AND FTES

Fall 2007 to Fall 2011



	Full-Time Enrollment	%	Part-Time Enrollment	%	Non-Credit Enrollment	Total Enrollment	Full-Time Equivalency (FTES)
<b>Fall 2007</b>	635	32.75%	1,160	59.82%	144	1,939	627
<b>Fall 2008</b>	642	34.57%	1,073	57.78%	142	1,857	638
<b>Fall 2009</b>	729	31.14%	1,454	62.11%	158	2,341	735
<b>Fall 2010</b>	682	22.50%	2,179	71.90%	168	3,029	831
<b>Fall 2011</b>	595	23.77%	1,838	73.43%	70	2503	680



# STUDENTS

## STUDENT OUTCOMES BY GENDER AND BOGG

Fall 2007 to Fall 2011

	Fall 2007	All Fall 2007	Fall 2008	All Fall 2008	Fall 2009	All Fall 2009	Fall 2010	All Fall 2010	Fall 2011	All Fall 2011
<b>FEMALE</b>	<b>47.65%</b>	<b>1939</b>	<b>48.63%</b>	<b>1857</b>	<b>39.02%</b>	<b>2345</b>	<b>30.44%</b>	<b>3029</b>	<b>27.49%</b>	<b>2503</b>
Course Retention Rate	87.78%	83.71%	85.98%	86.38%	86.50%	83.72%	84.95%	84.89%	89.42%	91.89%
Course Success Rate	66.19%	66.68%	67.11%	67.94%	65.16%	61.57%	68.75%	68.64%	71.93%	73.11%
Transfer Ready Rate	5.84%	5.57%	8.97%	5.06%	6.45%	4.14%	3.15%	1.16%	2.76%	1.16%
Next Term Persistence Rate	57.90%	53.69%	65.56%	65.48%	61.31%	53.94%	62.58%	51.54%	67.01%	52.38%
Next Year Persistence Rate	39.18%	33.99%	41.64%	42.00%	NA	NA	21.37%	25.35%	27.33%	16.30%
Avg. GPA	2.80	2.81	2.88	2.86	2.78	2.67	2.69	2.63	2.66	2.64
Avg. Units Enrolled	6.7	7.2	7.3	7.6	7.2	7.3	7.7	6.7	8.4	6.5
<b>MALE</b>	<b>52.09%</b>	<b>1939</b>	<b>51.37%</b>	<b>1857</b>	<b>60.30%</b>	<b>2345</b>	<b>69.56%</b>	<b>3029</b>	<b>72.27%</b>	<b>2503</b>
Course Retention Rate	80.82%	83.71%	86.71%	86.38%	82.07%	83.72%	84.86%	84.89%	93.15%	91.89%
Course Success Rate	67.22%	66.68%	68.66%	67.94%	59.43%	61.57%	68.58%	68.64%	73.70%	73.11%
Transfer Ready Rate	5.35%	5.57%	1.36%	5.06%	2.69%	4.14%	0.28%	1.16%	0.55%	1.16%
Next Term Persistence Rate	50.10%	53.69%	65.41%	65.48%	49.22%	53.94%	46.70%	51.54%	46.99%	52.38%
Next Year Persistence Rate	29.41%	33.99%	42.35%	42.00%	NA	NA	27.10%	25.35%	12.16%	16.30%
Avg. GPA	2.83	2.81	2.84	2.86	2.59	2.67	2.60	2.63	2.63	2.64
Avg. Units Enrolled	7.8	7.2	7.8	7.6	7.3	7.3	6.2	6.7	5.8	6.5
	Fall 2007	All Fall 2007	Fall 2008	All Fall 2008	Fall 2009	All Fall 2009	Fall 2010	All Fall 2010	Fall 2011	All Fall 2011
<b>BOGG Yes</b>	<b>49.56%</b>	<b>1939</b>	<b>54.12%</b>	<b>1857</b>	<b>62.09%</b>	<b>2345</b>	<b>72.53%</b>	<b>3029</b>	<b>75.39%</b>	<b>2503</b>
Course Retention Rate	78.33%	83.71%	83.76%	86.38%	80.60%	83.72%	82.76%	84.89%	90.74%	91.89%
Course Success Rate	61.33%	66.68%	63.31%	67.94%	58.02%	61.57%	65.97%	68.64%	70.59%	73.11%
Transfer Ready Rate	7.08%	5.57%	5.67%	5.06%	2.68%	4.14%	0.77%	1.16%	0.79%	1.16%
Next Term Persistence Rate	59.00%	53.69%	70.15%	65.48%	55.22%	53.94%	51.80%	51.54%	51.14%	52.38%
Next Year Persistence Rate	36.32%	33.99%	45.57%	42.00%	NA	NA	28.54%	25.35%	16.53%	16.30%
Avg. GPA	2.75	2.81	2.77	2.86	2.57	2.67	2.53	2.63	2.57	2.64
Avg. Units Enrolled	9.1	7.2	8.8	7.6	8.3	7.3	6.8	6.7	6.3	6.5
<b>BOGG No</b>	<b>50.44%</b>	<b>1939</b>	<b>45.88%</b>	<b>1857</b>	<b>37.91%</b>	<b>2345</b>	<b>27.47%</b>	<b>3029</b>	<b>24.61%</b>	<b>2503</b>
Course Retention Rate	91.45%	83.71%	90.37%	86.38%	90.31%	83.72%	90.45%	84.89%	94.91%	91.89%
Course Success Rate	74.38%	66.68%	75.01%	67.94%	69.07%	61.57%	75.58%	68.64%	79.70%	73.11%
Transfer Ready Rate	4.09%	5.57%	4.34%	5.06%	6.52%	4.14%	2.16%	1.16%	2.27%	1.16%
Next Term Persistence Rate	48.47%	53.69%	59.98%	65.48%	51.86%	53.94%	50.84%	51.54%	56.17%	52.38%
Next Year Persistence Rate	31.70%	33.99%	37.91%	42.00%	NA	NA	16.95%	25.35%	15.58%	16.30%
Avg. GPA	2.91	2.81	3.00	2.86	2.87	2.67	2.86	2.63	2.83	2.64
Avg. Units Enrolled	5.4	7.2	6.1	7.6	5.6	7.3	6.3	6.7	7.2	6.5



# STUDENTS

## STUDENT OUTCOMES BY AGE GROUP Fall 2007 to Fall 2011

	Fall 2007	All Fall 2007	Fall 2008	All Fall 2008	Fall 2009	All Fall 2009	Fall 2010	All Fall 2010	Fall 2011	All Fall 2011
<b>17 and Under</b>	<b>7.79%</b>	<b>1939</b>	<b>6.35%</b>	<b>1857</b>	<b>5.42%</b>	<b>2345</b>	<b>3.04%</b>	<b>3,029</b>	<b>4.04%</b>	<b>2,503</b>
Course Retention Rate	88.68%	83.71%	85.58%	86.38%	89.79%	83.72%	90.63%	84.89%	90.96%	91.89%
Course Success Rate	67.30%	66.68%	63.64%	67.94%	57.69%	61.57%	77.08%	68.64%	69.68%	73.11%
Transfer Ready Rate	0.00%	5.57%	0.00%	5.06%	0.00%	4.14%	0.00%	1.16%	0.00%	1.16%
Next Term Persistence Rate	64.90%	53.69%	66.95%	65.48%	54.33%	53.94%	64.13%	51.54%	63.37%	52.38%
Next Year Persistence Rate	37.09%	33.99%	36.44%	42.00%	NA	NA	20.65%	25.35%	23.76%	16.30%
Avg. GPA	2.89	2.81	2.69	2.86	2.69	2.67	2.86	2.63	2.62	2.64
Avg. Units Enrolled	5.1	7.2	6.7	7.6	6.3	7.3	6.1	6.7	5.5	6.5
<b>18-20</b>	<b>18.72%</b>	<b>1939</b>	<b>21.27%</b>	<b>1857</b>	<b>19.45%</b>	<b>2345</b>	<b>17.27%</b>	<b>3,029</b>	<b>17.86%</b>	<b>2,503</b>
Course Retention Rate	86.81%	83.71%	86.27%	86.38%	86.14%	83.72%	87.52%	84.89%	92.33%	91.89%
Course Success Rate	70.42%	66.68%	67.52%	67.94%	63.89%	61.57%	67.19%	68.64%	72.22%	73.11%
Transfer Ready Rate	6.06%	5.57%	7.34%	5.06%	4.61%	4.14%	1.34%	1.16%	0.89%	1.16%
Next Term Persistence Rate	61.98%	53.69%	76.96%	65.48%	64.91%	53.94%	63.29%	51.54%	68.90%	52.38%
Next Year Persistence Rate	34.99%	33.99%	44.81%	42.00%	NA	NA	26.20%	25.35%	25.06%	16.30%
Avg. GPA	2.59	2.81	2.71	2.86	2.57	2.67	2.32	2.63	2.38	2.64
Avg. Units Enrolled	11.7	7.2	11.7	7.6	10.7	7.3	11.0	6.7	11.3	6.5
<b>21-24</b>	<b>10.68%</b>	<b>1939</b>	<b>12.06%</b>	<b>1857</b>	<b>12.15%</b>	<b>2345</b>	<b>13.90%</b>	<b>3,029</b>	<b>12.74%</b>	<b>2,503</b>
Course Retention Rate	83.90%	83.71%	84.97%	86.38%	82.52%	83.72%	80.56%	84.89%	89.60%	91.89%
Course Success Rate	68.98%	66.68%	67.23%	67.94%	62.60%	61.57%	63.30%	68.64%	71.02%	73.11%
Transfer Ready Rate	19.81%	5.57%	8.04%	5.06%	10.88%	4.14%	1.90%	1.16%	3.45%	1.16%
Next Term Persistence Rate	59.90%	53.69%	61.16%	65.48%	56.14%	53.94%	48.46%	51.54%	45.77%	52.38%
Next Year Persistence Rate	31.88%	33.99%	40.63%	42.00%	NA	NA	17.34%	25.35%	12.23%	16.30%
Avg. GPA	2.77	2.81	2.81	2.86	2.63	2.67	2.47	2.63	2.42	2.64
Avg. Units Enrolled	9.0	7.2	8.2	7.6	8.7	7.3	7.2	6.7	7.7	6.5
<b>25-34</b>	<b>20.84%</b>	<b>1939</b>	<b>21.27%</b>	<b>1857</b>	<b>22.39%</b>	<b>2345</b>	<b>27.40%</b>	<b>3,029</b>	<b>26.41%</b>	<b>2,503</b>
Course Retention Rate	76.84%	83.71%	83.71%	86.38%	79.59%	83.72%	82.98%	84.89%	91.50%	91.89%
Course Success Rate	60.86%	66.68%	64.83%	67.94%	57.10%	61.57%	69.06%	68.64%	71.59%	73.11%
Transfer Ready Rate	4.70%	5.57%	7.09%	5.06%	3.05%	4.14%	1.08%	1.16%	1.36%	1.16%
Next Term Persistence Rate	49.75%	53.69%	63.54%	65.48%	49.14%	53.94%	41.33%	51.54%	40.09%	52.38%
Next Year Persistence Rate	29.95%	33.99%	40.25%	42.00%	NA	NA	22.29%	25.35%	11.95%	16.30%
Avg. GPA	2.85	2.81	2.90	2.86	2.63	2.67	2.62	2.63	2.56	2.64
Avg. Units Enrolled	8.1	7.2	7.9	7.6	7.4	7.3	5.7	6.7	5.4	6.5
<b>35-49</b>	<b>23.36%</b>	<b>1939</b>	<b>22.40%</b>	<b>1857</b>	<b>25.76%</b>	<b>2345</b>	<b>27.47%</b>	<b>3,029</b>	<b>28.65%</b>	<b>2,503</b>
Course Retention Rate	81.01%	83.71%	88.64%	86.38%	82.72%	83.72%	84.94%	84.89%	92.34%	91.89%
Course Success Rate	66.41%	66.68%	70.36%	67.94%	60.46%	61.57%	68.75%	68.64%	75.60%	73.11%
Transfer Ready Rate	5.08%	5.57%	2.64%	5.06%	4.30%	4.14%	1.08%	1.16%	0.70%	1.16%
Next Term Persistence Rate	45.47%	53.69%	62.26%	65.48%	49.67%	53.94%	52.64%	51.54%	52.16%	52.38%
Next Year Persistence Rate	31.57%	33.99%	41.11%	42.00%	NA	NA	32.57%	25.35%	14.78%	16.30%
Avg. GPA	2.99	2.81	3.01	2.86	2.70	2.67	2.69	2.63	2.91	2.64
Avg. Units Enrolled	6.5	7.2	6.6	7.6	6.2	7.3	5.8	6.7	5.1	6.5
<b>50 and over</b>	<b>18.62%</b>	<b>1939</b>	<b>16.59%</b>	<b>1857</b>	<b>14.75%</b>	<b>2345</b>	<b>10.93%</b>	<b>3,029</b>	<b>10.31%</b>	<b>2,503</b>
Course Retention Rate	91.50%	83.71%	90.47%	86.38%	86.87%	83.72%	87.88%	84.89%	94.92%	91.89%
Course Success Rate	65.83%	66.68%	74.82%	67.94%	67.18%	61.57%	80.38%	68.64%	79.07%	73.11%
Transfer Ready Rate	83.00%	5.57%	2.60%	5.06%	87.00%	4.14%	0.60%	1.16%	0.00%	1.16%
Next Term Persistence Rate	51.80%	53.69%	60.06%	65.48%	52.60%	53.94%	56.19%	51.54%	59.69%	52.38%
Next Year Persistence Rate	40.44%	33.99%	44.81%	42.00%	NA	NA	25.08%	25.35%	18.60%	16.30%
Avg. GPA	3.34	2.81	3.29	2.86	3.10	2.67	3.26	2.63	2.89	2.64
Avg. Units Enrolled	2.6	7.2	3.2	7.6	3.8	7.3	3.9	6.7	4.2	6.5

# STUDENTS

## STUDENT OUTCOMES BY ENROLLMENT STATUS Fall 2007 to Fall 2011

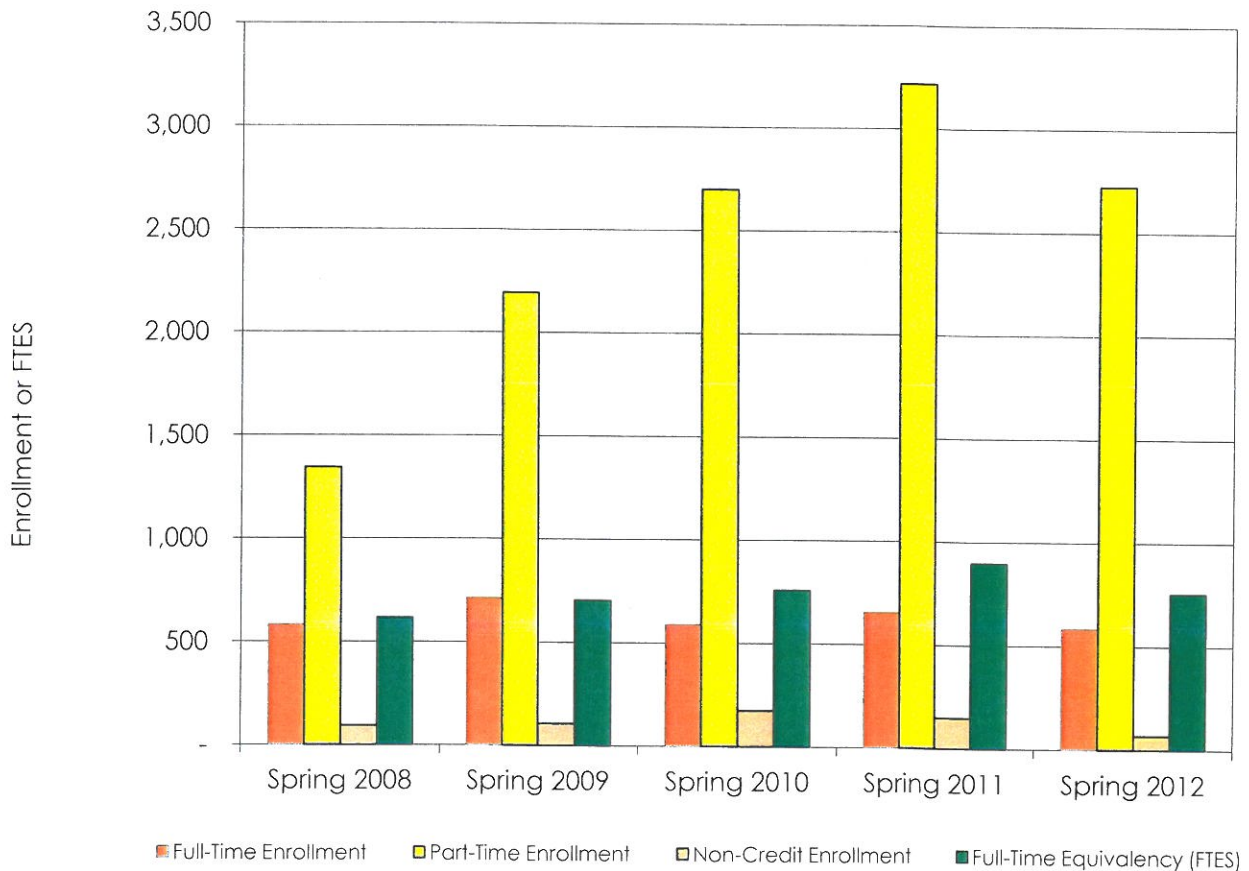
	Fall 2007	All Fall 2007	Fall 2008	All Fall 2008	Fall 2009	All Fall 2009	Fall 2010	All Fall 2010	Fall 2011	All Fall 2011
<b>CONTINUING</b>	<b>39.76%</b>	<b>1939</b>	<b>42.49%</b>	<b>1857</b>	<b>41.11%</b>	<b>2345</b>	<b>35.72%</b>	<b>3,029</b>	<b>49.34%</b>	<b>2,503</b>
Course Retention Rate	85.06%	83.71%	88.44%	86.38%	85.90%	83.72%	84.60%	84.89%	92.12%	91.89%
Course Success Rate	70.31%	66.68%	73.11%	67.94%	67.49%	61.57%	69.31%	68.64%	74.23%	73.11%
Transfer Ready Rate	11.93%	5.57%	8.24%	5.06%	6.74%	4.14%	2.03%	1.16%	1.54%	1.16%
Next Term Persistence Rate	63.04%	53.69%	72.12%	65.48%	63.80%	53.94%	69.50%	51.54%	71.01%	52.38%
Next Year Persistence Rate	40.73%	33.99%	44.74%	42.00%	NA	NA	31.98%	25.35%	20.40%	16.30%
Avg. GPA	2.91	2.81	3.00	2.86	2.79	2.67	2.71	2.63	2.69	2.64
Avg. Units Enrolled	8.6	7.2	8.2	7.6	8.6	7.3	8.3	6.7	7.2	6.5
<b>K-12</b>	<b>3.82%</b>	<b>1939</b>	<b>2.69%</b>	<b>1857</b>	<b>3.80%</b>	<b>2345</b>	<b>1.82%</b>	<b>3,029</b>	<b>2.84%</b>	<b>2,503</b>
Course Retention Rate	92.63%	83.71%	88.41%	86.38%	90.98%	83.72%	96.77%	84.89%	95.59%	91.89%
Course Success Rate	58.95%	66.68%	50.72%	67.94%	43.44%	61.57%	90.32%	68.64%	77.94%	73.11%
Transfer Ready Rate	0.00%	5.57%	0.00%	5.06%	0.00%	4.14%	0.00%	1.16%	0.00%	1.16%
Next Term Persistence Rate	55.41%	53.69%	52.00%	65.48%	43.82%	53.94%	54.55%	51.54%	57.75%	52.38%
Next Year Persistence Rate	20.27%	33.99%	22.00%	42.00%	NA	NA	14.55%	25.35%	21.13%	16.30%
Avg. GPA	2.97	2.81	2.61	2.86	2.83	2.67	3.11	2.63	2.74	2.64
Avg. Units Enrolled	2.5	7.2	2.8	7.6	2.4	7.3	1.6	6.7	2.9	6.5
<b>NEW</b>	<b>31.15%</b>	<b>1939</b>	<b>31.99%</b>	<b>1857</b>	<b>37.27%</b>	<b>2345</b>	<b>50.64%</b>	<b>3,029</b>	<b>37.91%</b>	<b>2,503</b>
Course Retention Rate	80.42%	83.71%	84.79%	86.38%	80.90%	83.72%	86.42%	84.89%	91.37%	91.89%
Course Success Rate	65.59%	66.68%	63.49%	67.94%	54.80%	61.57%	69.74%	68.64%	71.33%	73.11%
Transfer Ready Rate	0.00%	5.57%	0.00%	5.06%	11.00%	4.14%	0.00%	1.16%	0.00%	1.16%
Next Term Persistence Rate	48.18%	53.69%	66.33%	65.48%	49.89%	53.94%	39.83%	51.54%	28.35%	52.38%
Next Year Persistence Rate	29.64%	33.99%	43.77%	42.00%	NA	NA	23.01%	25.35%	11.06%	16.30%
Avg. GPA	2.77	2.81	2.69	2.86	2.45	2.67	2.52	2.63	2.51	2.64
Avg. Units Enrolled	7.8	7.2	7.9	7.6	6.8	7.3	5.9	6.7	5.9	6.5
<b>RETURNING</b>	<b>25.27%</b>	<b>1939</b>	<b>22.83%</b>	<b>1857</b>	<b>17.83%</b>	<b>2345</b>	<b>11.82%</b>	<b>3,029</b>	<b>9.91%</b>	<b>2,503</b>
Course Retention Rate	85.66%	83.71%	84.22%	86.38%	82.50%	83.72%	79.61%	84.89%	91.99%	91.89%
Course Success Rate	60.21%	66.68%	64.82%	67.94%	60.55%	61.57%	60.57%	68.64%	72.28%	73.11%
Transfer Ready Rate	3.27%	5.57%	6.84%	5.06%	7.42%	4.14%	3.63%	1.16%	4.03%	1.16%
Next Term Persistence Rate	45.51%	53.69%	53.54%	65.48%	41.87%	53.94%	46.93%	51.54%	50.00%	52.38%
Next Year Persistence Rate	30.82%	33.99%	36.79%	42.00%	NA	NA	17.04%	25.35%	14.52%	16.30%
Avg. GPA	2.64	2.81	2.82	2.86	2.73	2.67	2.64	2.63	2.52	2.64
Avg. Units Enrolled	5.2	7.2	6.5	7.6	6.2	7.3	5.9	6.7	6.2	6.5



# STUDENTS

TOTAL ENROLLMENT: FULL-TIME, PART-TIME, NON-CREDIT AND FTES

Spring 2008 to Spring 2012



	Full-Time Enrollment	%	Part-Time Enrollment	%	Non-Credit Enrollment	Total Enrollment	Full-Time Equivalency (FTES)
Spring 2008	581	28.79%	1,344	66.60%	93	2,018	616
Spring 2009	711	23.60%	2,193	72.78%	106	3,013	703
Spring 2010	588	16.98%	2,699	77.96%	175	3,462	758
Spring 2011	654	16.26%	3,219	80.05%	148	4,021	897
Spring 2012	584	17.28%	2,726	80.67%	69	3,379	754



# STUDENTS

## STUDENT OUTCOMES BY GENDER AND BOGG Spring 2008 to Spring 2012

	Spring 2008	All Spring 2008	Spring 2009	All Spring 2009	Spring 2010	All Spring 2010	Spring 2011	All Spring 2011	Spring 2012	All Spring 2012
<b>FEMALE</b>	<b>46.19%</b>	<b>2020</b>	<b>35.31%</b>	<b>3013</b>	<b>29.61%</b>	<b>3,462</b>	<b>25.34 %</b>	<b>4,021</b>	<b>22.91%</b>	<b>3379</b>
Course Retention Rate	85.47%	85.98%	85.97%	86.00%	85.47%	88.95%	87.83 %	87.68 %	87.80%	89.28%
Course Success Rate	68.84%	70.03%	65.72%	69.34%	73.67%	73.36%	70.46 %	70.39 %	68.83%	73.18%
Transfer Ready Rate	6.54%	5.40%	13.35%	7.73%	3.51%	1.85%	3.93 %	1.44 %	5.68%	1.92%
Next Term Persistence Rate	46.73%	40.64%	46.05%	34.55%	44.10%	31.66%	26.30 %	25.99 %	27.78%	14.95%
Next Year Persistence Rate	42.12%	38.47%	16.26%	18.50%	38.83%	37.84%	0.00 %	0.00 %	0.00%	0.00%
Avg. GPA	2.93	2.90	2.86	2.90	2.95	3.04	2.84	2.85	2.64	2.73
Avg. Units Enrolled	6.7	6.7	6.7	5.5	6.3	5.1	6.9	5.5	7.8	5.7
<b>MALE</b>	<b>53.76%</b>	<b>2020</b>	<b>64.12%</b>	<b>3013</b>	<b>70.34%</b>	<b>3,462</b>	<b>74.66 %</b>	<b>4,021</b>	<b>77.09%</b>	<b>3379</b>
Course Retention Rate	86.73%	85.98%	86.05%	86.00%	85.83%	88.95%	87.61 %	87.68 %	89.92%	89.28%
Course Success Rate	70.93%	70.03%	71.75%	69.34%	73.33%	73.36%	70.37 %	70.39 %	75.07%	73.18%
Transfer Ready Rate	4.42%	5.40%	4.71%	7.73%	1.15%	1.85%	0.60 %	1.44 %	0.81%	1.92%
Next Term Persistence Rate	35.45%	40.64%	28.36%	34.55%	26.45%	31.66%	25.88 %	25.99 %	11.13%	14.95%
Next Year Persistence Rate	35.36%	38.47%	7.76%	18.50%	37.45%	37.84%	0.00 %	0.00 %	0.00%	0.00%
Avg. GPA	2.88	2.90	2.93	2.90	3.08	3.04	2.85	2.85	2.77	2.73
Avg. Units Enrolled	6.8	6.7	4.8	5.5	4.6	5.1	5.0	5.5	5.1	5.7
	Spring 2008	All Spring 2008	Spring 2009	All Spring 2009	Spring 2010	All Spring 2010	Spring 2011	All Spring 2011	Spring 2012	All Spring 2012
<b>BOGG Yes</b>	<b>44.01%</b>	<b>2020</b>	<b>36.54%</b>	<b>3013</b>	<b>47.86%</b>	<b>3,462</b>	<b>62.05%</b>	<b>4,021</b>	<b>64.46%</b>	<b>3,379</b>
Course Retention Rate	83.70%	85.98%	80.52%	86.00%	79.98%	88.95%	85.22%	87.68%	86.92%	89.28%
Course Success Rate	64.37%	70.03%	61.17%	69.34%	67.14%	73.36%	65.25%	70.39%	68.37%	73.18%
Transfer Ready Rate	8.66%	5.40%	9.17%	7.73%	1.57%	1.85%	1.28%	1.44%	1.47%	1.92%
Next Term Persistence Rate	50.66%	40.64%	54.86%	34.55%	43.75%	31.66%	33.87%	25.99%	17.77%	14.95%
Next Year Persistence Rate	43.98%	38.47%	18.17%	18.50%	38.68%	37.84%	0.00%	0.00%	0.00%	0.00%
Avg. GPA	2.78	2.90	2.80	2.90	2.40	3.04	2.43	2.85	2.59	2.73
Avg. Units Enrolled	9.2	6.7	9.3	5.5	7.4	5.1	6.7	5.5	6.6	5.7
<b>BOGG No</b>	<b>55.99%</b>	<b>2020</b>	<b>63.46%</b>	<b>3013</b>	<b>52.14%</b>	<b>3,462</b>	<b>37.95%</b>	<b>4,021</b>	<b>35.54%</b>	<b>3,379</b>
Course Retention Rate	90.24%	85.98%	92.57%	86.00%	92.44%	88.95%	93.20%	87.68%	94.43%	89.28%
Course Success Rate	77.39%	70.03%	79.14%	69.34%	83.46%	73.36%	81.93%	70.39%	83.69%	73.18%
Transfer Ready Rate	2.83%	5.40%	6.90%	7.73%	2.11%	1.85%	1.70%	1.44%	2.75%	1.92%
Next Term Persistence Rate	33.24%	40.64%	22.86%	34.55%	20.55%	31.66%	13.11%	25.99%	9.83%	14.95%
Next Year Persistence Rate	34.13%	38.47%	6.49%	18.50%	37.06%	37.84%	0.00%	0.00%	0.00%	0.00%
Avg. GPA	3.08	2.90	3.05	2.90	3.55	3.04	3.43	2.85	3.05	2.73
Avg. Units Enrolled	4.8	6.7	3.2	5.5	3.0	5.1	3.6	5.5	4.1	5.7

# STUDENTS

## STUDENT OUTCOMES BY AGE GROUP

Spring 2008 to Spring 2012

	Spring 2008	All Spring 2008	Spring 2009	All Spring 2009	Spring 2010	All Spring 2010	Spring 2011	All Spring 2011	Spring 2012	All Spring 2012
<b>17 and Under</b>	<b>5.59%</b>	<b>2020</b>	<b>4.38%</b>	<b>3013</b>	<b>3.21 %</b>	<b>3,462</b>	<b>2.46 %</b>	<b>4,021</b>	<b>2.81%</b>	<b>3,379</b>
Course Retention Rate	89.85%	85.98%	89.73%	86.00%	87.25%	88.95 %	86.72 %	87.68 %	92.25%	89.28%
Course Success Rate	68.53%	70.03%	54.75%	69.34%	75.96 %	73.36 %	67.19 %	70.39 %	74.65%	73.18%
Transfer Ready Rate	0.00%	5.40%	6.06%	7.73%	0.00 %	1.85 %	0.00 %	1.44 %	1.05%	1.92%
Next Term Persistence Rate	47.79%	40.64%	40.91%	34.55%	47.75 %	31.66 %	26.26 %	25.99 %	23.16%	14.95%
Next Year Persistence Rate	42.48%	38.47%	15.15%	18.50%	41.44 %	37.84 %	0.00 %	0.00 %	0.00%	0.00%
Avg. GPA	2.94	2.90	2.64	2.90	2.93	3.04	2.77	2.85	2.81	2.73
Avg. Units Enrolled	4.2	6.7	3.7	5.5	2.6	5.1	3.7	5.5	4.2	5.7
<b>18-20</b>	<b>18.02%</b>	<b>2020</b>	<b>15.00%</b>	<b>3013</b>	<b>12.97 %</b>	<b>3,462</b>	<b>11.84 %</b>	<b>4,021</b>	<b>13.17%</b>	<b>3,379</b>
Course Retention Rate	87.50%	85.98%	85.09%	86.00%	84.81%	88.95 %	88.60 %	87.68 %	89.49%	89.28%
Course Success Rate	70.63%	70.03%	62.59%	69.34%	67.38 %	73.36 %	66.82 %	70.39 %	67.59%	73.18%
Transfer Ready Rate	5.77%	5.40%	20.13%	7.73%	4.45 %	1.85 %	3.78 %	1.44 %	5.17%	1.92%
Next Term Persistence Rate	42.03%	40.64%	50.22%	34.55%	47.44 %	31.66 %	36.13 %	25.99 %	26.52%	14.95%
Next Year Persistence Rate	38.46%	38.47%	17.70%	18.50%	39.20 %	37.84 %	0.00 %	0.00 %	0.00%	0.00%
Avg. GPA	2.69	2.90	2.60	2.90	2.45	3.04	2.37	2.85	2.34	2.73
Avg. Units Enrolled	10.8	6.7	10.5	5.5	10.1	5.1	10.4	5.5	11.1	5.7
<b>21-24</b>	<b>12.38%</b>	<b>2020</b>	<b>9.96%</b>	<b>3013</b>	<b>11.27 %</b>	<b>3,462</b>	<b>12.34 %</b>	<b>4,021</b>	<b>11.78%</b>	<b>3,379</b>
Course Retention Rate	82.14%	85.98%	81.84%	86.00%	81.36%	88.95 %	84.21 %	87.68 %	89.19%	89.28%
Course Success Rate	64.03%	70.03%	62.88%	69.34%	69.98 %	73.36 %	64.21 %	70.39 %	70.30%	73.18%
Transfer Ready Rate	20.00%	5.40%	18.00%	7.73%	3.59 %	1.85 %	2.42 %	1.44 %	3.02%	1.92%
Next Term Persistence Rate	36.40%	40.64%	41.67%	34.55%	36.15 %	31.66 %	21.57 %	25.99 %	17.09%	14.95%
Next Year Persistence Rate	34.40%	38.47%	10.67%	18.50%	33.85 %	37.84 %	0.00 %	0.00 %	0.00%	0.00%
Avg. GPA	2.72	2.90	2.72	2.90	2.68	3.04	2.39	2.85	2.49	2.73
Avg. Units Enrolled	8.4	6.7	8.2	5.5	7.2	5.1	6.8	5.5	7.4	5.7
<b>25-34</b>	<b>21.63%</b>	<b>2020</b>	<b>20.25%</b>	<b>3013</b>	<b>23.28 %</b>	<b>3,462</b>	<b>26.04 %</b>	<b>4,021</b>	<b>26.04%</b>	<b>3,379</b>
Course Retention Rate	84.05%	85.98%	83.82%	86.00%	83.40%	88.95 %	86.98 %	87.68 %	89.24%	89.28%
Course Success Rate	69.23%	70.03%	69.39%	69.34%	70.82 %	73.36 %	69.41 %	70.39 %	73.45%	73.18%
Transfer Ready Rate	5.49%	5.40%	6.72%	7.73%	1.36 %	1.85 %	1.91 %	1.44 %	2.05%	1.92%
Next Term Persistence Rate	40.05%	40.64%	38.85%	34.55%	29.40 %	31.66 %	22.45 %	25.99 %	11.70%	14.95%
Next Year Persistence Rate	36.16%	38.47%	12.30%	18.50%	31.64 %	37.84 %	0.00 %	0.00 %	0.00%	0.00%
Avg. GPA	3.00	2.90	3.05	2.90	2.79	3.04	2.64	2.85	2.74	2.73
Avg. Units Enrolled	7.6	6.7	6.3	5.5	5.5	5.1	5.4	5.5	5.4	5.7
<b>35-49</b>	<b>23.47%</b>	<b>2020</b>	<b>24.73%</b>	<b>3013</b>	<b>27.09 %</b>	<b>3,462</b>	<b>29.27 %</b>	<b>4,021</b>	<b>29.36%</b>	<b>3,379</b>
Course Retention Rate	86.13%	85.98%	85.71%	86.00%	85.68%	88.95 %	87.27 %	87.68 %	87.76%	89.28%
Course Success Rate	71.47%	70.03%	73.06%	69.34%	75.60 %	73.36 %	71.42 %	70.39 %	74.98%	73.18%
Transfer Ready Rate	2.11%	5.40%	4.43%	7.73%	1.81 %	1.85 %	0.34 %	1.44 %	0.50%	1.92%
Next Term Persistence Rate	36.50%	40.64%	30.47%	34.55%	31.24 %	31.66 %	32.29 %	25.99 %	13.81%	14.95%
Next Year Persistence Rate	38.82%	38.47%	11.41%	18.50%	38.38 %	37.84 %	0.00 %	0.00 %	0.00%	0.00%
Avg. GPA	3.06	2.90	3.10	2.90	3.13	3.04	2.96	2.85	2.97	2.73
Avg. Units Enrolled	5.9	6.7	4.7	5.5	4.3	5.1	5.0	5.5	4.8	5.7
<b>50 and over</b>	<b>18.91%</b>	<b>2020</b>	<b>25.32%</b>	<b>3013</b>	<b>22.18 %</b>	<b>3,462</b>	<b>18.06 %</b>	<b>4,021</b>	<b>16.81%</b>	<b>3,379</b>
Course Retention Rate	89.57%	85.98%	94.49%	86.00%	94.51%	88.95 %	92.90 %	87.68 %	91.61%	89.28%
Course Success Rate	76.16%	70.03%	85.47%	69.34%	87.19 %	73.36 %	84.39 %	70.39 %	84.48%	73.18%
Transfer Ready Rate	1.05%	5.40%	79.00%	7.73%	0.26 %	1.85 %	0.55 %	1.44 %	1.06%	1.92%
Next Term Persistence Rate	45.81%	40.64%	22.28%	34.55%	20.70 %	31.66 %	17.22 %	25.99 %	10.04%	14.95%
Next Year Persistence Rate	42.15%	38.47%	4.06%	18.50%	44.40 %	37.84 %	0.00 %	0.00 %	0.00%	0.00%
Avg. GPA	3.43	2.90	3.44	2.90	3.68	3.04	3.55	2.85	3.09	2.73
Avg. Units Enrolled	2.6	6.7	1.8	5.5	2.1	5.1	2.6	5.5	2.8	5.7



# STUDENTS

## STUDENT OUTCOMES BY ENROLLMENT STATUS Spring 2008 to Spring 2012

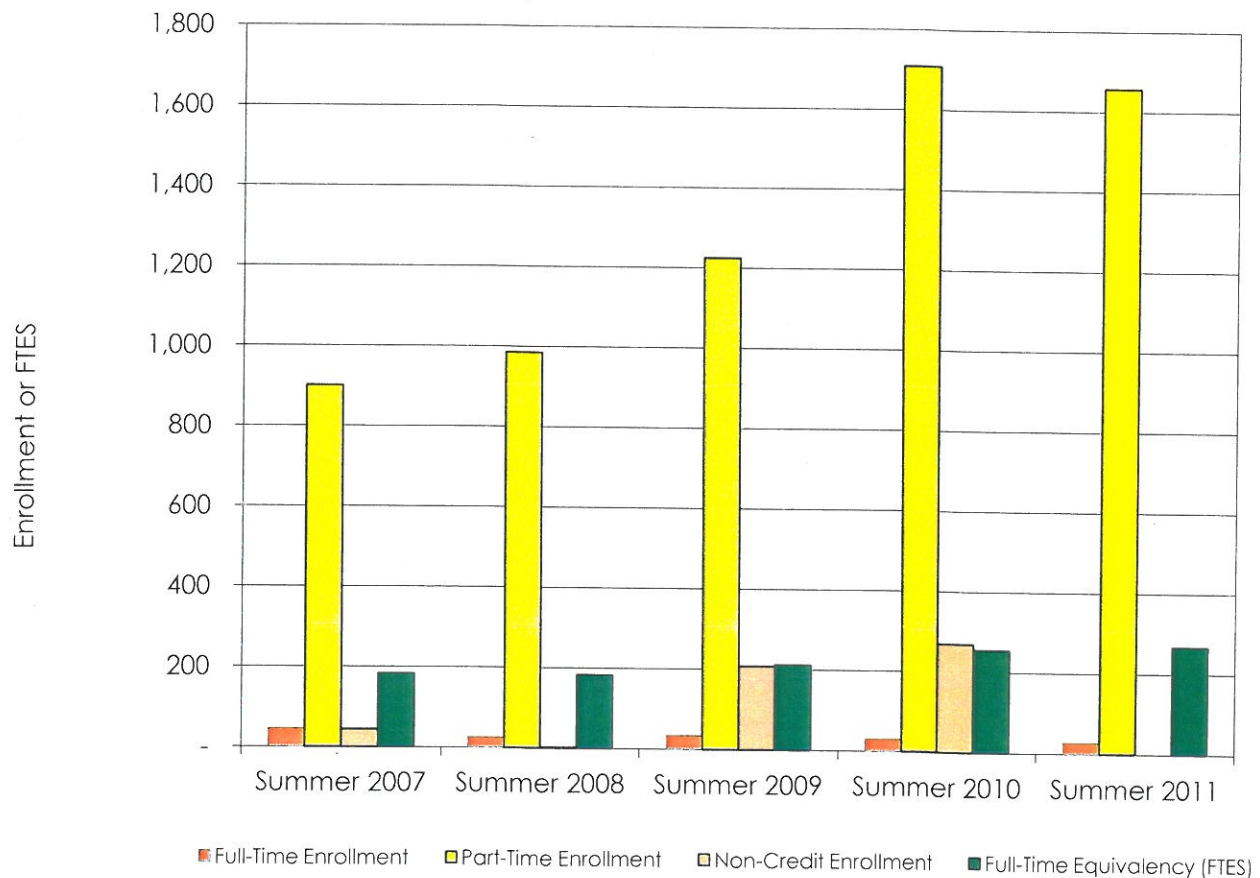
	Spring 2008	All Spring 2008	Spring 2009	All Spring 2009	Spring 2010	All Spring 2010	Spring 2011	All Spring 2011	Spring 2012	All Spring 2012
<b>CONTINUING</b>	<b>49.60%</b>	<b>2020</b>	<b>39.43%</b>	<b>3013</b>	<b>37.06%</b>	<b>3,462</b>	<b>39.02%</b>	<b>4,021</b>	<b>39.01%</b>	<b>3,379</b>
Course Retention Rate	87.96%	85.98%	85.26%	86.00%	85.05%	88.95%	87.48%	87.68%	89.55%	89.28%
Course Success Rate	72.93%	70.03%	68.33%	69.34%	71.38%	73.36%	69.75%	70.39%	73.58%	73.18%
Transfer Ready Rate	8.28%	5.40%	15.07%	7.73%	3.35%	1.85%	2.61%	1.44%	3.34%	1.92%
Next Term Persistence Rate	55.39%	40.64%	58.92%	34.55%	55.42%	31.66%	45.25%	25.99%	29.06%	14.95%
Next Year Persistence Rate	48.10%	38.47%	20.03%	18.50%	47.08%	37.84%	0.00%	0.00%	0.00%	0.00%
Avg. GPA	2.92	2.90	2.87	2.90	2.69	3.04	2.65	2.85	2.70	2.73
Avg. Units Enrolled	8.5	6.7	9.4	5.5	8.9	5.1	8.7	5.5	8.7	5.7
<b>K-12</b>	<b>3.61%</b>	<b>2020</b>	<b>3.42%</b>	<b>3013</b>	<b>2.54%</b>	<b>3,462</b>	<b>2.29%</b>	<b>4,021</b>	<b>2.46%</b>	<b>3,379</b>
Course Retention Rate	91.49%	85.98%	88.89%	86.00%	85.60%	88.95%	95.89%	87.68%	96.63%	89.28%
Course Success Rate	64.89%	70.03%	47.95%	69.34%	80.82%	73.36%	71.23%	70.39%	79.78%	73.18%
Transfer Ready Rate	0.00%	5.40%	11.65%	7.73%	0.00%	1.85%	0.00%	1.44%	0.00%	1.92%
Next Term Persistence Rate	26.03%	40.64%	31.07%	34.55%	40.91%	31.66%	22.83%	25.99%	19.28%	14.95%
Next Year Persistence Rate	20.55%	38.47%	6.80%	18.50%	37.50%	37.84%	0.00%	0.00%	0.00%	0.00%
Avg. GPA	3.06	2.90	2.44	2.90	3.08	3.04	2.90	2.85	2.85	2.73
Avg. Units Enrolled	2.7	6.7	2.7	5.5	2.2	5.1	2.2	5.5	2.9	5.7
<b>NEW</b>	<b>20.59%</b>	<b>2020</b>	<b>29.87%</b>	<b>3013</b>	<b>32.38%</b>	<b>3,462</b>	<b>35.12%</b>	<b>4,021</b>	<b>35.22%</b>	<b>3,379</b>
Course Retention Rate	81.91%	85.98%	86.31%	86.00%	85.69%	88.95%	86.86%	87.68%	87.25%	89.28%
Course Success Rate	64.56%	70.03%	71.42%	69.34%	70.98%	73.36%	68.75%	70.39%	68.03%	73.18%
Transfer Ready Rate	0.00%	5.40%	0.00%	7.73%	0.00%	1.85%	0.00%	1.44%	0.00%	1.92%
Next Term Persistence Rate	28.13%	40.64%	16.22%	34.55%	21.32%	31.66%	16.36%	25.99%	6.13%	14.95%
Next Year Persistence Rate	27.88%	38.47%	5.00%	18.50%	25.87%	37.84%	0.00%	0.00%	0.00%	0.00%
Avg. GPA	2.90	2.90	3.02	2.90	2.92	3.04	2.61	2.85	2.61	2.73
Avg. Units Enrolled	5.9	6.7	2.7	5.5	3.5	5.1	3.9	5.5	4.5	5.7
<b>RETURNING</b>	<b>26.19%</b>	<b>2020</b>	<b>27.28%</b>	<b>3013</b>	<b>28.02%</b>	<b>3,462</b>	<b>23.58%</b>	<b>4,021</b>	<b>23.32%</b>	<b>3,379</b>
Course Retention Rate	82.32%	85.98%	87.85%	86.00%	87.69%	88.95%	89.20%	87.68%	90.90%	89.28%
Course Success Rate	65.46%	70.03%	73.35%	69.34%	82.58%	73.36%	75.16%	70.39%	79.30%	73.18%
Transfer Ready Rate	4.91%	5.40%	5.11%	7.73%	2.16%	1.85%	1.79%	1.44%	2.66%	1.92%
Next Term Persistence Rate	24.57%	40.64%	19.83%	34.55%	11.34%	31.66%	8.76%	25.99%	4.19%	14.95%
Next Year Persistence Rate	31.00%	38.47%	4.14%	18.50%	39.48%	37.84%	0.00%	0.00%	0.00%	0.00%
Avg. GPA	2.85	2.90	2.97	2.90	3.59	3.04	3.35	2.85	2.98	2.73
Avg. Units Enrolled	4.6	6.7	3.1	5.5	2.3	5.1	2.8	5.5	2.9	5.7



# STUDENTS

TOTAL ENROLLMENT: FULL-TIME, PART-TIME, NON-CREDIT AND FTES

Summer 2007 to Summer 2010



	Full-Time Enrollment	%	Part-Time Enrollment	%	Non-Credit Enrollment	Total Enrollment	Full-Time Equivalency (FTES)
Summer 2007	45	4.55%	901	91.01%	44	990	183
Summer 2008	25	2.47%	986	97.33%	2	1,013	183
Summer 2009	34	2.32%	1,225	83.50%	208	1,467	212
Summer 2010	30	1.49%	1,709	85.07%	270	2,009	255
Summer 2011	27	1.60%	1,658	98.40%	0	1,685	267

# STUDENTS

## STUDENT OUTCOMES BY GENDER

Summer 2007 to Summer 2011

	Summer 2007	All Summer 2007	Summer 2008	All Summer 2008	Summer 2009	All Summer 2009	Summer 2010	All Summer 2010	Summer 2011	All Summer 2011
<b>FEMALE</b>	<b>40.10%</b>	<b>990</b>	<b>33.07%</b>	<b>1013</b>	<b>31.79%</b>	<b>1469</b>	<b>76.75 %</b>	<b>2,009</b>	<b>17.03%</b>	<b>1,685</b>
Course Retention Rate	93.91%	94.50%	92.24%	93.54%	91.68%	87.02%	91.02 %	90.39 %	90.02%	92.40%
Course Success Rate	76.72%	82.34%	77.41%	82.48%	60.75%	65.43%	79.58 %	78.78 %	75.36%	78.16%
Transfer Ready Rate	2.27%	1.92%	4.78%	1.88%	4.50%	2.04%	0.19 %	0.60 %	3.14%	0.77%
Next Term Persistence Rate	62.97%	56.87%	65.37%	52.91%	68.31%	61.54%	47.73 %	53.51 %	71.43%	50.62%
Next Year Persistence Rate	22.17%	26.57%	22.99%	26.46%	NA	NA	23.87 %	23.49 %	24.39%	29.85%
Avg. GPA	3.10	3.19	2.97	3.08	2.87	2.89	2.94	2.92	2.69	2.72
Avg. Units Enrolled	4.1	4.1	4.8	4.1	3.4	3.5	3.3	3.2	4.8	4.1
<b>MALE</b>	<b>59.70%</b>	<b>990</b>	<b>66.63%</b>	<b>1013</b>	<b>67.26%</b>	<b>1469</b>	<b>23.25 %</b>	<b>2,009</b>	<b>82.91%</b>	<b>1,685</b>
Course Retention Rate	95.10%	94.50%	94.18%	93.54%	84.81%	87.02%	88.16 %	90.39 %	92.95%	92.40%
Course Success Rate	85.83%	82.34%	84.98%	82.48%	67.61%	65.43%	75.96 %	78.78 %	78.86%	78.16%
Transfer Ready Rate	1.69%	1.92%	44.00%	1.88%	91.00%	2.04%	1.93 %	0.60 %	0.29%	0.77%
Next Term Persistence Rate	52.79%	56.87%	46.96%	52.91%	58.20%	61.54%	72.59 %	53.51 %	46.39%	50.62%
Next Year Persistence Rate	29.61%	26.57%	28.30%	26.46%	NA	NA	22.27 %	23.49 %	30.99%	29.85%
Avg. GPA	3.26	3.19	3.15	3.08	2.90	2.89	2.86	2.92	2.74	2.72
Avg. Units Enrolled	4.0	4.1	3.8	4.1	3.5	3.5	3.1	3.2	4.0	4.1

# STUDENTS

## STUDENT OUTCOMES BY AGE GROUP

Summer 2007 to Summer 2011

	Summer 2007	All Summer 2007	Summer 2008	All Summer 2008	Summer 2009	All Summer 2009	Summer 2010	All Summer 2010	Summer 2011	All Summer 2011
<b>17 and Under</b>	<b>4.65%</b>	<b>990</b>	<b>3.65%</b>	<b>1013</b>	<b>6.26%</b>	<b>1469</b>	<b>3.33%</b>	<b>2,009</b>	<b>2.37%</b>	<b>1,685</b>
Course Retention Rate	94.81%	94.50%	85.94%	93.54%	94.21%	87.02%	86.54%	90.39%	92.98%	92.40%
Course Success Rate	86.61%	82.34%	68.75%	82.48%	48.76%	65.43%	71.15%	78.78%	78.95%	78.16%
Transfer Ready Rate	0.00%	1.92%	0.00%	1.88%	0.00%	2.04%	0.00%	0.60%	0.00%	0.77%
Next Term Persistence Rate	54.35%	56.87%	54.05%	52.91%	63.04%	61.54%	64.18%	53.51%	52.50%	50.62%
Next Year Persistence Rate	19.57%	26.57%	24.34%	26.46%	NA	NA	17.91%	23.49%	17.50%	29.85%
Avg. GPA	3.35	3.19	2.55	3.08	2.64	2.89	3.12	2.92	3.11	2.72
Avg. Units Enrolled	3.6	4.1	4.5	4.1	2.2	3.5	2.0	3.2	4.1	4.1
<b>18-20</b>	<b>11.82%</b>	<b>990</b>	<b>12.44%</b>	<b>1013</b>	<b>15.72%</b>	<b>1469</b>	<b>14.09%</b>	<b>2,009</b>	<b>8.19%</b>	<b>1,685</b>
Course Retention Rate	91.07%	94.50%	93.27%	93.54%	90.16%	87.02%	86.48%	90.39%	87.76%	92.40%
Course Success Rate	78.57%	82.34%	75.78%	82.48%	48.36%	65.43%	70.90%	78.78%	71.02%	78.16%
Transfer Ready Rate	3.42%	1.92%	0.00%	1.88%	2.60%	2.04%	0.35%	0.60%	1.45%	0.77%
Next Term Persistence Rate	68.38%	56.87%	53.97%	52.91%	71.00%	61.54%	76.33%	53.51%	62.32%	50.62%
Next Year Persistence Rate	19.66%	26.57%	15.08%	26.46%	NA	NA	18.37%	23.49%	19.57%	29.85%
Avg. GPA	2.98	3.19	2.78	3.08	2.47	2.89	2.59	2.92	2.40	2.72
Avg. Units Enrolled	4.7	4.1	5.2	4.1	3.0	3.5	2.3	3.2	4.9	4.1
<b>21-24</b>	<b>10.10%</b>	<b>990</b>	<b>9.87%</b>	<b>1013</b>	<b>10.14%</b>	<b>1469</b>	<b>11.50%</b>	<b>2,009</b>	<b>11.10%</b>	<b>1,685</b>
Course Retention Rate	95.29%	94.50%	93.40%	93.54%	87.50%	87.02%	87.58%	90.39%	90.00%	92.40%
Course Success Rate	78.01%	82.34%	81.73%	82.48%	61.40%	65.43%	73.15%	78.78%	70.97%	78.16%
Transfer Ready Rate	5.00%	1.92%	5.00%	1.88%	1.34%	2.04%	1.73%	0.60%	0.53%	0.77%
Next Term Persistence Rate	66.00%	56.87%	57.00%	52.91%	75.17%	61.54%	57.14%	53.51%	43.85%	50.62%
Next Year Persistence Rate	22.00%	26.57%	15.00%	26.46%	NA	NA	15.58%	23.49%	23.53%	29.85%
Avg. GPA	2.96	3.19	3.10	3.08	2.86	2.89	2.61	2.92	2.49	2.72
Avg. Units Enrolled	5.3	4.1	4.7	4.1	4.0	3.5	3.5	3.2	4.5	4.1
<b>25-34</b>	<b>21.92%</b>	<b>990</b>	<b>24.58%</b>	<b>1013</b>	<b>22.53%</b>	<b>1469</b>	<b>29.17%</b>	<b>2,009</b>	<b>28.31%</b>	<b>1,685</b>
Course Retention Rate	94.78%	94.50%	93.18%	93.54%	82.18%	87.02%	89.95%	90.39%	90.99%	92.40%
Course Success Rate	85.59%	82.34%	80.17%	82.48%	65.05%	65.43%	77.25%	78.78%	76.07%	78.16%
Transfer Ready Rate	3.23%	1.92%	3.61%	1.88%	1.51%	2.04%	0.34%	0.60%	1.47%	0.77%
Next Term Persistence Rate	68.66%	56.87%	63.86%	52.91%	65.56%	61.54%	43.69%	53.51%	44.23%	50.62%
Next Year Persistence Rate	30.41%	26.57%	27.31%	26.46%	NA	NA	20.99%	23.49%	22.64%	29.85%
Avg. GPA	3.22	3.19	3.05	3.08	2.91	2.89	2.90	2.92	2.54	2.72
Avg. Units Enrolled	5.1	4.1	5.0	4.1	4.3	3.5	3.5	3.2	3.9	4.1
<b>35-49</b>	<b>23.94%</b>	<b>990</b>	<b>28.23%</b>	<b>1013</b>	<b>27.09%</b>	<b>1469</b>	<b>29.57%</b>	<b>2,009</b>	<b>35.25%</b>	<b>1,685</b>
Course Retention Rate	92.53%	94.50%	91.87%	93.54%	84.14%	87.02%	91.35%	90.39%	94.07%	92.40%
Course Success Rate	80.54%	82.34%	81.98%	82.48%	69.36%	65.43%	80.28%	78.78%	80.54%	78.16%
Transfer Ready Rate	1.27%	1.92%	1.05%	1.88%	4.27%	2.04%	0.51%	0.60%	0.51%	0.77%
Next Term Persistence Rate	54.43%	56.87%	52.10%	52.91%	64.07%	61.54%	53.54%	53.51%	55.22%	50.62%
Next Year Persistence Rate	28.69%	26.57%	27.97%	26.46%	NA	NA	28.79%	23.49%	36.53%	29.85%
Avg. GPA	3.25	3.19	3.24	3.08	3.05	2.89	2.99	2.92	2.85	2.72
Avg. Units Enrolled	4.7	4.1	3.9	4.1	3.9	3.5	3.6	3.2	4.3	4.1
<b>50 and over</b>	<b>27.47%</b>	<b>990</b>	<b>21.13%</b>	<b>1013</b>	<b>18.04%</b>	<b>1469</b>	<b>12.29%</b>	<b>2,009</b>	<b>14.72%</b>	<b>1,685</b>
Course Retention Rate	97.79%	94.50%	98.77%	93.54%	93.30%	87.02%	94.74%	90.39%	95.59%	92.40%
Course Success Rate	86.73%	82.34%	94.77%	82.48%	83.51%	65.43%	89.75%	78.78%	86.03%	78.16%
Transfer Ready Rate	0.00%	1.92%	93.00%	1.88%	0.00%	2.04%	0.81%	0.60%	0.00%	0.77%
Next Term Persistence Rate	41.91%	56.87%	38.79%	52.91%	36.60%	61.54%	44.53%	53.51%	50.40%	50.62%
Next Year Persistence Rate	27.57%	26.57%	35.98%	26.46%	NA	NA	31.58%	23.49%	40.32%	29.85%
Avg. GPA	3.50	3.19	3.54	3.08	3.14	2.89	3.26	2.92	2.99	2.72
Avg. Units Enrolled	2.0	4.1	2.4	4.1	2.3	3.5	2.6	3.2	3.4	4.1



# STUDENTS

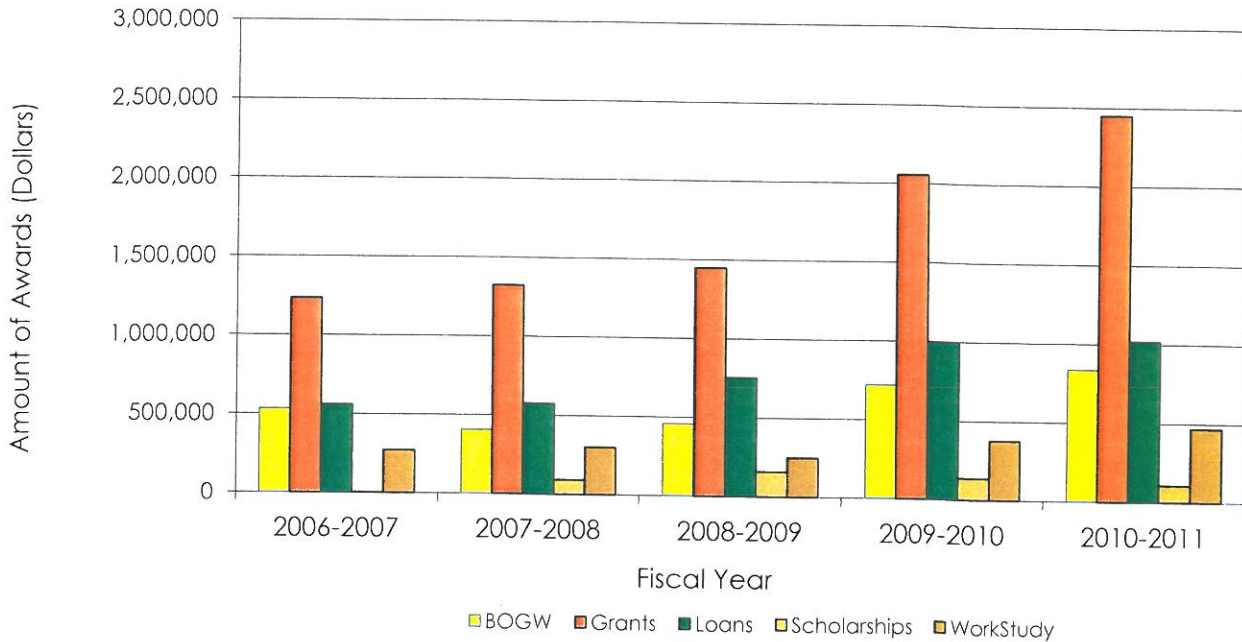
## STUDENT OUTCOMES BY ENROLLMENT STATUS Summer 2007 to Summer 2011

	Summer 2007	All Summer 2007	Summer 2008	All Summer 2008	Summer 2009	All Summer 2009	Summer 2010	All Summer 2010	Summer 2011	All Summer 2011
<b>CONTINUING</b>	<b>43.74%</b>	<b>990</b>	<b>50.84%</b>	<b>1013</b>	<b>36.83%</b>	<b>1469</b>	<b>36.29%</b>	<b>2,009</b>	<b>55.91%</b>	<b>1,685</b>
Course Retention Rate	92.55%	94.50%	91.76%	93.54%	88.69%	87.02%	86.13%	90.39%	91.22%	92.40%
Course Success Rate	80.41%	82.34%	80.04%	82.48%	75.44%	65.43%	75.06%	78.78%	73.71%	78.16%
Transfer Ready Rate	3.23%	1.92%	1.36%	1.88%	3.70%	2.04%	0.96%	0.60%	1.06%	0.77%
Next Term Persistence Rate	78.52%	56.87%	73.79%	52.91%	83.18%	61.54%	81.21%	53.51%	78.87%	50.62%
Next Year Persistence Rate	33.26%	26.57%	30.87%	26.46%	NA	NA	38.68%	23.49%	44.16%	29.85%
Avg. GPA	3.18	3.19	3.10	3.08	3.05	2.89	2.95	2.92	2.69	2.72
Avg. Units Enrolled	5.3	4.1	4.9	4.1	5.0	3.5	4.6	3.2	4.9	4.1
<b>K-12</b>	<b>1.92%</b>	<b>990</b>	<b>1.28%</b>	<b>1013</b>	<b>3.20%</b>	<b>1469</b>	<b>1.54%</b>	<b>2,009</b>	<b>1.60%</b>	<b>1,685</b>
Course Retention Rate	100.00%	94.50%	100.00%	93.54%	96.55%	87.02%	84.21%	90.39%	97.14%	92.40%
Course Success Rate	92.31%	82.34%	77.27%	82.48%	62.07%	65.43%	71.05%	78.78%	85.71%	78.16%
Transfer Ready Rate	0.00%	1.92%	0.00%	1.88%	0.00%	2.04%	0.00%	0.60%	0.00%	0.77%
Next Term Persistence Rate	26.32%	56.87%	38.46%	52.91%	34.04%	61.54%	38.71%	53.51%	33.33%	50.62%
Next Year Persistence Rate	10.53%	26.57%	7.69%	26.46%	NA	NA	19.35%	23.49%	14.81%	29.85%
Avg. GPA	3.05	3.19	2.63	3.08	2.33	2.89	3.32	2.92	3.13	2.72
Avg. Units Enrolled	2.8	4.1	4.8	4.1	2.5	3.5	3.1	3.2	3.6	4.1
<b>NEW</b>	<b>27.88%</b>	<b>990</b>	<b>24.78%</b>	<b>1013</b>	<b>38.19%</b>	<b>1469</b>	<b>50.27%</b>	<b>2,009</b>	<b>31.99%</b>	<b>1,685</b>
Course Retention Rate	96.58%	94.50%	95.17%	93.54%	79.81%	87.02%	95.77%	90.39%	94.35%	92.40%
Course Success Rate	88.58%	82.34%	85.02%	82.48%	48.42%	65.43%	82.41%	78.78%	88.39%	78.16%
Transfer Ready Rate	0.00%	1.92%	0.00%	1.88%	0.00%	2.04%	0.00%	0.60%	0.00%	0.77%
Next Term Persistence Rate	44.20%	56.87%	37.45%	52.91%	57.75%	61.54%	38.42%	53.51%	8.91%	50.62%
Next Year Persistence Rate	20.29%	26.57%	19.12%	26.46%	NA	NA	12.67%	23.49%	4.45%	29.85%
Avg. GPA	3.37	3.19	3.05	3.08	2.59	2.89	2.75	2.92	3.12	2.72
Avg. Units Enrolled	3.3	4.1	3.5	4.1	2.7	3.5	2.5	3.2	3.1	4.1
<b>RETURNING</b>	<b>26.46%</b>	<b>990</b>	<b>23.10%</b>	<b>1013</b>	<b>21.78%</b>	<b>1469</b>	<b>11.85%</b>	<b>2,009</b>	<b>10.50%</b>	<b>1,685</b>
Course Retention Rate	96.07%	94.50%	96.02%	93.54%	94.85%	87.02%	92.47%	90.39%	94.55%	92.40%
Course Success Rate	79.12%	82.34%	86.36%	82.48%	73.82%	65.43%	84.25%	78.78%	81.09%	78.16%
Transfer Ready Rate	1.91%	1.92%	5.13%	1.88%	3.13%	2.04%	2.10%	0.60%	1.69%	0.77%
Next Term Persistence Rate	36.64%	56.87%	24.36%	52.91%	35.63%	61.54%	34.45%	53.51%	29.94%	50.62%
Next Year Persistence Rate	23.28%	26.57%	25.64%	26.46%	NA	NA	23.53%	23.49%	33.33%	29.85%
Avg. GPA	3.02	3.19	3.13	3.08	2.93	2.89	3.17	2.92	2.60	2.72
Avg. Units Enrolled	3.0	4.1	3.0	4.1	2.4	3.5	2.3	3.2	3.2	4.1

# STUDENTS

## STUDENT FINANCIAL AID

Fiscal Year 2003-2004 to 2009-2010



### Amount of Awards (Dollars)

	BOGW	Grants	Loans	Scholarships	Workstudy	Total	Yearly Percent Change in Total Award Amount
2003-2004	285,987	1,282,256	501,195	9,877	385,180	2,464,495	
2004-2005	414,785	1,488,190	570,482	29,913	405,617	2,908,987	18.0%
2005-2006	521,760	1,257,224	573,152	0	271,721	2,623,857	-9.8%
2006-2007	528,693	1,232,800	557,327	2,250	270,543	2,591,613	-1.2%
2007-2008	403,062	1,323,511	575,454	92,289	299,125	2,693,441	3.9%
2008-2009	457,175	1,450,315	754,023	159,162	248,913	3,069,588	14.0%
2009-2010	718,419	2,056,750	996,859	137,735	377,060	4,286,823	34.95%
2010-2011	834,546	2,451,134	1,018,026	107,552	468,891	4,880,149	13.84%

### Number of Awards (Duplicated Headcount)

	BOGW	Grants	Loans	Scholarships	Workstudy	Total	Yearly Percent Change in Total Awards
2003-2004	1,119	800	179	10	184	2,292	
2004-2005	1,071	912	317	26	204	2,530	10.4%
2005-2006	1,285	661	321	0	150	2,417	-4.5%
2006-2007	1,482	732	277	2	145	2,638	9.1%
2007-2008	1,542	686	200	163	138	2,729	3.4%
2008-2009	1,712	654	256	231	144	2,997	9.8%
2009-2010	2,541	773	340	204	172	4,030	30.55%
2010-2011	2,782	845	337	145	275	4,384	8.78%

# STUDENTS

## ENROLLMENT FEES/TUITION BY RESIDENCE STATUS

1996-1998 To 2011-2012

	California Residents Enrollment Fee Per Unit	Non-Resident Tuition Per Unit Including Enrollment Fee*	Nevada Resident Good Neighbor Policy Fees Per Unit
1996-1998	\$13	\$140	\$42
1998-2000	\$13	\$144	\$42
2000-2002	\$11	\$158	\$42
2002-2004	\$11	\$164	\$42
2004-2006	\$18	\$201	\$42
2006-2007	\$26	\$209	\$42
2007-2008	\$20	\$203	\$42
2008-2009	\$20	\$203	\$42
2009-2010	\$26	\$216	\$42
2010-2011	\$26	\$216	\$42
2011-2012	\$36	\$235	\$42

\*See LCCD catalog for Non-Resident Fee Exemption AB540



# STUDENTS

## ENROLLMENT BY TERM: STATUS

Summer 2007 to Spring 2012

	Continuing	K-12	First-time Student	Returning	First-time Transfer	Total
<b>Summer 2007</b>	420	18	206	260	85	989
%	42.5%	1.8%	20.8%	26.3%	8.6%	100%
<b>Fall 2007</b>	764	75	485	474	136	1,934
%	39.5%	3.9%	25.1%	24.5%	7.0%	100%
<b>Spring 2008</b>	995	71	269	521	157	2,013
%	49.4%	3.5%	13.4%	25.9%	7.8%	100%
<b>Summer 2008</b>	515	13	149	226	108	1,011
%	50.9%	1.3%	14.7%	22.4%	10.7%	100%
<b>Fall 2008</b>	786	49	454	399	163	1,851
%	42.5%	2.6%	24.5%	21.6%	8.8%	100%
<b>Spring 2009</b>	1,187	104	696	803	219	3,009
%	39.4%	3.5%	23.1%	26.7%	7.3%	100%
<b>Summer 2009</b>	539	47	367	310	202	1,465
%	36.8%	3.2%	25.1%	21.2%	13.8%	100%
<b>Fall 2009</b>	964	83	668	401	225	2,341
%	41.2%	3.5%	28.5%	17.1%	9.6%	100%
<b>Spring 2010</b>	1,283	88	799	970	322	3,462
%	37.1%	2.5%	23.1%	28.0%	9.3%	100%
<b>Summer 2010</b>	729	31	732	238	278	2,008
%	36.3%	1.5%	36.5%	11.9%	13.8%	100%
<b>Fall 2010</b>	1,082	55	1,198	358	336	3,029
%	35.7%	1.8%	39.6%	11.8%	11.1%	100%
<b>Spring 2011</b>	1,569	92	1,015	948	397	4,021
%	39.0%	2.3%	25.2%	23.6%	9.9%	100%
<b>Summer 2011</b>	942	27	345	177	194	1,685
%	55.9%	1.6%	20.5%	10.5%	11.5%	100%
<b>Fall 2011</b>	1,235	71	669	248	280	2,503
%	49.3%	2.8%	26.7%	9.9%	11.2%	100%
<b>Spring 2012</b>	1,318	83	816	788	374	3,379
%	39.0%	2.5%	24.1%	23.3%	11.1%	100%

# STUDENTS

## ENROLLMENT BY TERM: RESIDENT STATUS

Summer 2007 to Spring 2012

	California Resident	Nevada Good Neighbor	Out-of-State Residents	International	540	Total
<b>Summer 2007</b>	914	45	25	1	5	990
%	92.3%	4.5%	2.5%	0.1%	0.5%	100%
<b>Fall 2007</b>	1,803	82	38	10	6	1,939
%	93.0%	4.2%	2.0%	0.5%	0.3%	100%
<b>Spring 2008</b>	1,896	72	38	8	6	2,020
%	93.9%	3.6%	1.9%	0.4%	0.3%	100%
<b>Summer 2008</b>	941	41	19	5	7	1,013
%	92.9%	4.0%	1.9%	0.5%	0.7%	100%
<b>Fall 2008</b>	1,710	88	35	7	17	1,857
%	92.1%	4.7%	1.9%	0.4%	0.9%	100%
<b>Spring 2009</b>	2,825	91	51	10	36	3,013
%	93.8%	3.0%	1.7%	0.3%	1.2%	100%
<b>Summer 2009</b>	1,369	45	32	2	21	1,469
%	93.2%	3.1%	2.2%	0.1%	1.4%	100%
<b>Fall 2009</b>	2,222	69	24	6	20	2,341
%	94.9%	2.9%	1.0%	0.3%	0.9%	100%
<b>Spring 2010</b>	3,295	70	43	3	34	3,445
%	95.6%	2.0%	1.2%	0.1%	1.0%	100%
<b>Summer 2010</b>	1,837	98	52	5	14	2,006
%	91.6%	4.9%	2.6%	0.2%	0.7%	100%
<b>Fall 2010</b>	2,822	129	46	13	18	3,028
%	93.2%	4.3%	1.5%	0.4%	0.6%	100%
<b>Spring 2011</b>	3,800	111	77	12	21	4,021
%	94.5%	2.8%	1.9%	0.3%	0.5%	100%
<b>Summer 2011</b>	1,612	41	22	1	9	1,685
%	95.7%	2.4%	1.3%	0.1%	0.5%	100%
<b>Fall 2011</b>	2,336	112	28	23	4	2,503
%	93.3%	4.5%	1.1%	0.9%	0.2%	100%
<b>Spring 2012</b>	3,198	76	65	19	18	3,376
%	94.7%	2.3%	1.9%	0.6%	0.5%	100%

## STUDENTS

### ENROLLMENT BY TERM: GENDER

Summer 2007 to Spring 2012

	Female	Male	Unknown	Total
<b>Summer 2007</b>	397	591	2	990
%	40.1%	59.7%	0.2%	100%
<b>Fall 2007</b>	924	1,010	5	1,939
%	47.7%	52.1%	0.3%	100%
<b>Spring 2008</b>	933	1,086	1	2,020
%	46.2%	53.8%	0.0%	100%
<b>Summer 2008</b>	335	675	3	1,013
%	33.1%	66.6%	0.3%	100%
<b>Fall 2008</b>	903	954		1,857
%	48.6%	51.4%		100%
<b>Spring 2009</b>	1,064	1,932	17	3,013
%	35.3%	64.1%	0.6%	100%
<b>Summer 2009</b>	467	988	14	1,469
%	31.8%	67.3%	1.0%	100%
<b>Fall 2009</b>	915	1,414	16	2,345
%	39.0%	60.3%	0.7%	100%
<b>Spring 2010</b>	1,025	2,435	2	3,462
%	29.6%	70.3%	0.1%	100%
<b>Summer 2010</b>	467	1,542		2,009
%	23.2%	76.8%		100%
<b>Fall 2010</b>	922	2,107		3,029
%	30.4%	69.6%		100%
<b>Spring 2011</b>	1,019	3,002		4,021
%	25.3%	74.7%		100%
<b>Summer 2011</b>	287	1,397	1	1,685
%	17.0%	82.9%	0%	100%
<b>Fall 2011</b>	688	1,809	6	2,503
%	30.4%	69.6%	0%	100%
<b>Spring 2012</b>	774	2,605		3,379
%	22.9%	77.1%		100%



# STUDENTS

## ENROLLMENT BY TERM: ETHNICITY

Summer 2007 to Spring 2011

	African American	American Indian/ Alaskan Native	Asian	Hispanic	Other Non-White	Pacific Islander	White Non-Hispanic	Unknown	Total
<b>Summer 2007</b>	67	32	20	126	2	22	663	58	990
%	6.8%	3.2%	2.0%	12.7%	0.2%	2.2%	67.0%	5.9%	100%
<b>Fall 2007</b>	151	80	32	238	13	33	1,319	73	1,939
%	7.8%	4.1%	1.7%	12.3%	0.7%	1.7%	68.0%	3.8%	100%
<b>Spring 2008</b>	115	75	28	222	18	42	1,438	82	2,020
%	5.7%	3.7%	1.4%	11.0%	0.9%	2.1%	71.2%	4.1%	100%
<b>Summer 2008</b>	78	38	18	126	8	12	689	44	1,013
%	7.7%	3.8%	1.8%	12.4%	0.8%	1.2%	68.0%	4.3%	100%
<b>Fall 2008</b>	114	80	25	237	21	41	1,281	58	1,857
%	6.1%	4.3%	1.3%	12.8%	1.1%	2.2%	69.0%	3.1%	100%
<b>Spring 2009</b>	120	94	28	322	26	46	2,242	135	3,013
%	4.0%	3.1%	0.9%	10.7%	0.9%	1.5%	74.4%	4.5%	100%
<b>Summer 2009</b>	129	42	22	197	4	21	1,003	51	1,469
%	8.8%	2.9%	1.5%	13.4%	0.3%	1.4%	68.3%	3.5%	100%
<b>Fall 2009</b>	246	92	35	320	12	33	1,529	78	2,345
%	10.5%	3.9%	1.5%	13.6%	0.5%	1.4%	65.2%	3.3%	100%
<b>Spring 2010</b>	390	118	61	330	330	35	2,096	102	3,462
%	11.3%	3.4%	1.8%	9.5%	9.5%	1.0%	60.5%	2.9%	100%
<b>Summer 2010</b>	365	87	61	211	146	17	972	150	2,009
%	18.2%	4.3%	3.0%	10.5%	7.3%	0.8%	48.4%	7.5%	100%
<b>Fall 2010</b>	551	115	74	488	200	37	1,488	76	3,029
%	18.2%	3.8%	2.4%	16.1%	6.6%	1.2%	49.1%	2.5%	100%
<b>Spring 2011</b>	650	125	104	576	255	38	2,185	88	4,021
%	16.2%	3.1%	2.6%	14.3%	6.3%	0.9%	54.3%	2.2%	100%
<b>Summer 2011</b>	402	52	54	272	83	18	765	39	1,685
%	23.9%	3.1%	3.2%	16.1%	4.9%	1.1%	45.4%	2.3%	100%
<b>Fall 2011</b>	454	103	73	425	144	28	1,227	49	2,503
%	18.1%	4.1%	2.9%	17.0%	5.8%	1.1%	49.0%	2.0%	100%
<b>Spring 2012</b>	571	113	80	511	238	44	1,740	82	3,379
%	16.9%	3.3%	2.4%	15.1%	7.0%	1.3%	51.5%	2.4%	100%

# STUDENTS

## ENROLLMENT BY TERM: AGE GROUP, AVERAGE AGE

Summer 2007 to Spring 2012

	17 and Under	18-20	21-24	25-34	35-49	50 and Over	Unknown	Total	Average Age
<b>Summer 2007</b>	46	117	100	217	237	272	1	990	<b>38.61 years</b>
%	4.6%	11.8%	10.1%	21.9%	23.9%	27.5%	<0.05%	100%	
<b>Fall 2007</b>	151	363	207	404	453	361	-	1,939	<b>34.54 years</b>
%	7.8%	18.7%	10.7%	20.8%	23.4%	18.6%	<0.05%	100%	
<b>Spring 2008</b>	113	364	250	437	474	382	-	2,020	<b>34.65 years</b>
%	5.6%	18.0%	12.4%	21.6%	23.5%	18.9%	<0.05%	100%	
<b>Summer 2008</b>	37	126	100	249	286	214	1	1,013	<b>36.61 years</b>
%	3.7%	12.4%	9.9%	24.6%	28.2%	21.1%	0%	100%	
<b>Fall 2008</b>	118	395	224	395	416	308	1	1,857	<b>33.45 years</b>
%	6.4%	21.3%	12.1%	21.3%	22.4%	16.6%	0%	100%	
<b>Spring 2009</b>	132	452	300	610	745	763	11	3,013	<b>37.23 years</b>
%	4.4%	15.0%	10.0%	20.2%	24.7%	25.3%	<0.05%	100%	
<b>Summer 2009</b>	92	231	149	331	398	265	3	1,469	<b>34.84 years</b>
%	6.3%	15.7%	10.1%	22.5%	27.1%	18.0%	0.2%	100%	
<b>Fall 2009</b>	127	456	285	525	604	346	2	2,345	<b>33.49 years</b>
%	5.4%	19.4%	12.2%	22.4%	25.8%	14.8%	0.1%	100%	
<b>Spring 2010</b>	111	449	390	806	938	768		3,462	<b>36.91 years</b>
%	3.2%	13.0%	11.3%	23.3%	27.1%	22.2%		100%	
<b>Summer 2010</b>	67	283	231	586	594	247	1	2,009	<b>33.83 years</b>
%	3.3%	14.1%	11.5%	29.2%	29.6%	12.3%	0.0%	100%	
<b>Fall 2010</b>	92	523	421	830	832	331		3,029	<b>32.7 years</b>
%	3.0%	17.3%	13.9%	27.4%	27.5%	10.9%	0.0%	100%	
<b>Spring 2011</b>	99	476	496	1,047	1,177	726		4,021	<b>35.89 years</b>
%	2.5%	11.8%	12.3%	26.0%	29.3%	18.1%	0.0%	100%	
<b>Summer 2011</b>	40	138	187	477	594	248	1	1,685	<b>35.80 years</b>
%	2.4%	8.2%	11.1%	28.3%	35.3%	14.7%	0.1%	100%	
<b>Fall 2011</b>	101	447	319	661	717	258		2,503	<b>32.40 years</b>
%	4.0%	17.9%	12.7%	26.4%	28.6%	10.3%	0.0%	100%	
<b>Spring 2012</b>	95	445	398	880	992	568	1	3,379	<b>35.30 years</b>
%	2.8%	13.2%	11.8%	26.0%	29.4%	16.8%	0.0%	100%	

# SUBJECTS AND FTES

## FIVE ACADEMIC YEAR COMPARISON

2007-08 to 2011-12

Subject	FTES 2007-08	FTES 2008-09	% Change from Prior Year	FTES 2009-10	% Change from Prior Year	FTES 2010-11	% Change from Prior Year	FTES 2011-12	% Change from Prior Year
AERO - Aviation	2.2	1.2	53.0%	1.8	35.2%	2.1	14.3%	0.0	-100.0%
AGR - Agriculture	30.8	28.8	-7.1%	42.9	33.0%	41.7	-2.9%	33.6	-24.1%
AJ - Administration of Justice	47.1	48.9	3.7%	53.4	8.5%	50.9	-4.9%	40.1	-26.9%
ANTH - Anthropology	17.2	22.8	24.7%	14.9	-53.0%	18.0	17.2%	20.5	12.2%
ART - Art	107.6	137.2	21.6%	119.8	-14.5%	145.0	17.4%	111.0	-30.6%
ASTR - Astronomy	5.0	9.0	44.4%	4.2	-114.3%	0.0	NA	5.0	100.0%
AT - Automotive Technology	12.9	21.7	40.7%	29.9	27.4%	24.0	-24.7%	21.1	-13.7%
BIOL - Biology	29.9	24.5	-22.2%	39.1	37.3%	33.4	-17.1%	45.3	26.3%
BUS - Business	21.2	39.1	45.7%	30.4	-28.4%	32.4	6.1%	26.8	-20.9%
CA - Computer Applications	8.9	13.1	31.9%	7.3	-79.2%	10.9	33.0%	2.8	-289.3%
CARS - Careers	6.3	2.3	-171.5%	1.8	-31.4%	2.2	19.5%	2.8	21.4%
CD - Child Development	23.4	18.0	-30.0%	25.9	30.6%	26.8	3.2%	26.8	0.0%
CG - Counseling/Guidance		7.5	NA	57.8	86.9%	95.5	39.4%	32.7	-192.0%
CHEM - Chemistry	5.8	12.4	53.2%	11.1	-11.7%	16.6	33.1%	16.7	0.6%
CORS - Correctional Science	17.0	16.0	-6.3%	15.4	-3.7%	8.4	-83.3%	3.8	-121.1%
COS - Cosmetology	50.1	14.0	NA		NA	5.5	100.0%	0.0	0.0%
COT - Computer Office Tech	9.2	7.7	-19.0%	7.9	2.5%	0.0	NA	8.0	100.0%
CS - Computer Science	2.3	6.5	64.1%	1.5	-333.3%	3.8	60.5%	1.0	-280.0%
CT - Construction Technology	7.7	2.8	-175.3%	2.0	-39.8%	0.0	NA	0.0	0.0%
DS - Developmental Studies	25.5	41.2	38.1%	35.0	-17.8%	57.0	38.6%	51.8	-10.0%
ECON - Economics	2.2	3.6	38.9%	10.5	65.7%	10.0	-5.0%	12.1	17.4%
EMT - Emergency Medical Tech	12.7	11.4	-11.8%	4.8	-138.8%	9.3	48.7%	6.0	-55.0%
ENGL - English	85.7	89.3	4.0%	119.8	25.5%	148.8	19.5%	129.4	-15.0%
ES - Ethnic Studies	24.5	24.8	1.2%	13.9	-78.4%	6.1	-127.9%	10.7	43.0%
FILM - Film	14.9	13.1	-14.1%	12.9	-1.6%	11.8	-9.3%	15.3	22.9%
FS - Fire Science	22.4	37.5	40.4%	27.4	-37.3%	189.9	85.6%	200.2	5.1%
GEOG - Geography	5.3	4.6	-15.2%		NA	0.0	NA	0.0	0.0%
GEOLOG - Geology	6.2	3.8	-64.4%	7.8	51.6%	9.0	13.3%	10.2	11.8%
GSS - Gunsmithing	105.3	97.5	-8.0%	106.5	8.4%	103.0	-3.4%	104.0	1.0%
HIST - History	37.0	58.9	37.2%	65.7	10.3%	63.0	-4.3%	71.8	12.3%
HLTH - Health	55.5	52.8	-5.2%	44.7	-18.1%	62.6	28.6%	62.6	0.0%
HO - Health Occupations	7.1	11.9	40.2%	6.8	-74.7%	16.5	58.8%	5.7	-189.5%
HUM - Humanities	19.4	28.9	32.9%	21.0	-37.6%	30.1	30.2%	55.6	45.9%



# SUBJECTS AND FTES

## FIVE ACADEMIC YEAR COMPARISON 2007-08 to 2011-12

Subject	FTES 2007-08	FTES 2008-09	% Change from Prior Year	FTES 2009-10	% Change from Prior Year	FTES 2010-11	% Change from Prior Year	FTES 2010-11	% Change from Prior Year
HUS - Human Services	58.3	49.0	-18.9%	62.7	21.8%	103.0	39.1%	43.2	-138.4%
IT - Industrial Technology	1.1	3.1	64.6%	3.9	20.0%	7.3	46.8%	4.9	-49.0%
JOUR - Journalism	6.3	7.2	12.4%	5.1	-41.9%	3.5	-44.9%	3.9	10.3%
MATH - Mathematics	126.3	161.4	21.7%	199.0	18.9%	204.2	2.6%	190.0	-7.5%
MUS - Music	9.0	10.8	16.5%	9.8	-10.1%	29.6	66.9%	7.1	-316.9%
PE - Physical Education	7.1	1.6		0.0		5.9	99.5%	0.0	0.0%
PEAC - PE Activity	134.2	108.1	-24.1%	117.7	8.2%	107.5	-9.5%	61.1	-75.9%
PEAC - PE Activity Tech	1.2	0.4	-224.0%	0.7	49.0%	0.5	-48.0%	0.3	-66.7%
PHIL - Philosophy	22.0	14.9	-47.7%	9.0	-65.6%	23.6	61.9%	20.0	-18.0%
PHSC - Physical Science	3.6	1.3	-176.9%	2.1	38.1%	1.7	-23.5%	2.0	15.0%
PHYS - Physics		2.0				3.2	100.0%	0.0	0.0%
PLSC - Political Science	22.8	25.3	9.9%	20.0	-26.5%	23.0	13.0%	29.7	22.6%
PSY - Psychology	93.7	95.6	2.0%	85.6	-11.7%	87.9	2.6%	87.0	-1.0%
READ - Reading	9.7	15.5	37.6%	12.7	-22.4%	15.8	19.9%	11.3	-39.8%
SOC - Sociology	34.4	36.0	4.4%	67.5	46.7%	104.5	35.5%	85.5	-22.2%
SPAN - Spanish		5.1		7.7	33.1%	4.0	-91.8%	0.0	0.0%
SPCH - Speech	11.0	11.6	5.3%	11.6	-0.2%	12.5	7.4%	13.0	3.8%
TUTR - Tutoring		0.1		0.1	-18.5%	1.2	92.5%	0.6	-100.0%
VN - Vocational Nursing	55.0	35.7	-53.8%	39.8	10.3%	42.7	6.8%	23.5	-81.7%
WE - Work Experience	9.0	11.7	23.3%	14.4	18.3%	14.1	-1.9%	8.5	-65.9%
WT - Welding Technology	48.9	64.1	23.6%	49.2	-30.2%	31.9	-54.3%	31.1	-2.6%
<b>Grand Total</b>	<b>1483.4</b>	<b>1573.5</b>	<b>5.7%</b>	<b>1662.4</b>	<b>5.3%</b>	<b>2033.0</b>	<b>18.2%</b>	<b>1716.0</b>	<b>-18.5%</b>

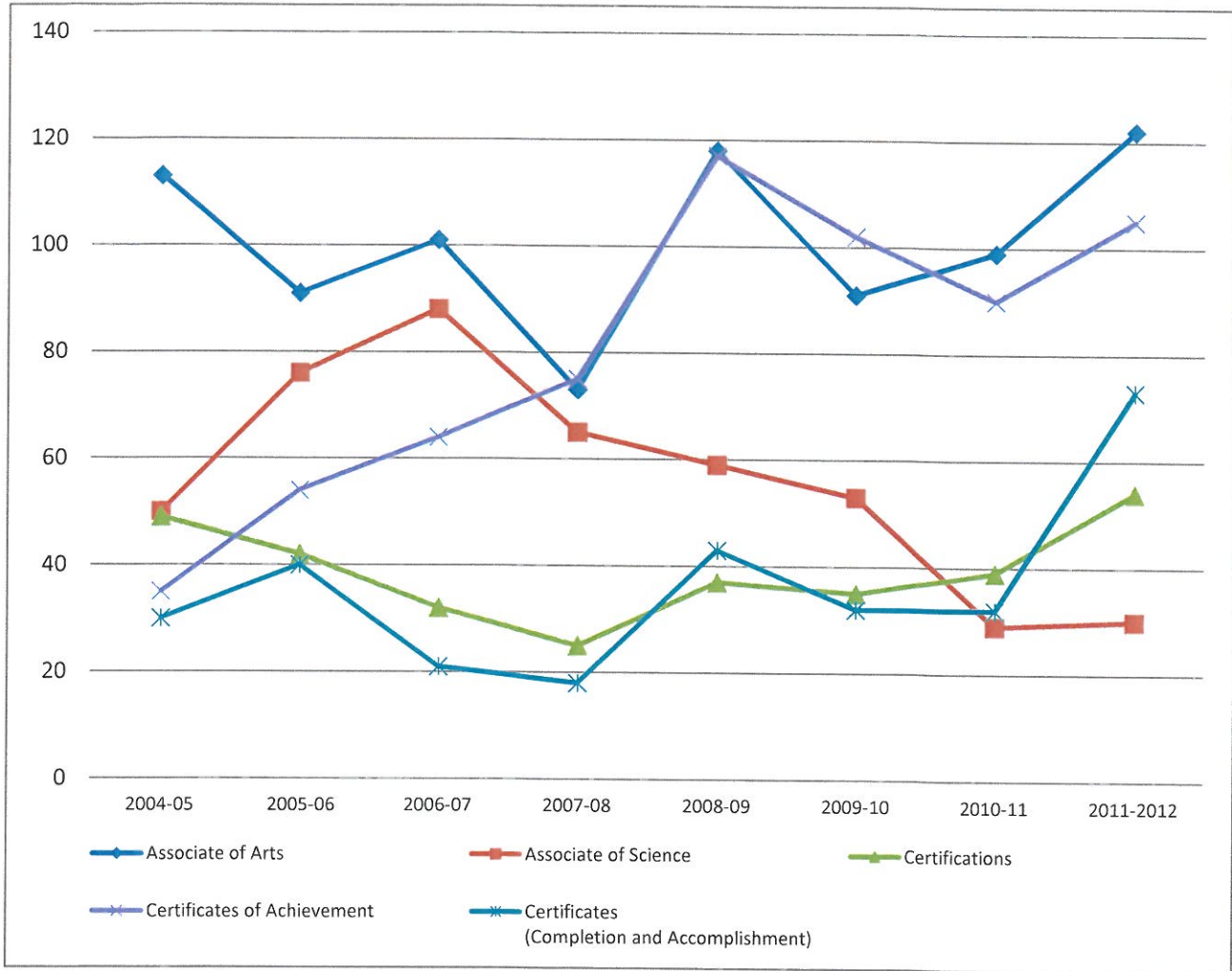
# AWARDS



# AWARDS

## NUMBER AWARDED BY AWARD LEVEL

AY 2004-2005 TO 2011-2012



	2004-05	2005-06	2006-07	2007-08	2008-09	2009-10	2010-11	2011-2012
Associate of Arts	113	91	101	73	118	91	99	122
Associate of Science	50	76	88	65	59	53	29	30
Certifications	49	42	32	25	37	35	39	54
Certificates of Achievement	35	54	64	75	117	102	90	105
Certificates (Completion and Accomplishment)	30	40	21	18	43	32	32	73
<b>Total</b>	<b>277</b>	<b>303</b>	<b>306</b>	<b>256</b>	<b>374</b>	<b>313</b>	<b>289</b>	<b>384</b>

Academic Year Percent Change	9.4%	1.0%	-16.3%	46.1%	-16.3%	-7.7%	32.9%
------------------------------	------	------	--------	-------	--------	-------	-------

Source: LCCD Transfer Center



# AWARDS

## PERCENTAGE AWARDS TO HEADCOUNT AND TOP 10 PROGRAMS FOR LOCAL STUDENTS

AY 2004-2005 TO 2011-12

	2004-05	2005-06	2006-07	2007-08	2008-09	2009-10	2010-11	2011-2012
<b>Award Count</b>	208	277	147	195	365	313	289	384
<b>Headcount (Unduplicated)</b>	5422	3807	3334	3062	3881	4485	5684	Not Yet Available
<b>Percentage Awards to Enrollment</b>	3.84%	7.28%	4.41%	6.37%	9.40%	6.98%	5.08%	Not Yet Available

### Top Academic Programs For Local Students Graduated (duplicated)

<b>2008-09</b>	<b>Grads</b>
CSU General Education Certificate of Achievement	14
CSU General Education Certification	14
University Studies: CSU A.A. Degree	14
Liberal Arts A.A. Degree	8
AA University Studies: Emphasis in Social Science	5
Vocational Nursing Certificate of Achievement	3
AA General Studies: Emphasis in Social Science	3
Child Development Certificate of Achievement	3
Child Development Certificate of Completion	3
A.A. Administration of Justice	3
Administration of Justice Certificate of Achievement	3
<b>2009-10</b>	<b>Grads</b>
CSU General Education Certificate of Achievement	19
CSU General Education Certification	18
University Studies: CSU A.A. Degree	8
AA University Studies: Emphasis in Social Science	8
Vocational Nursing Certificate of Achievement	8
A.S. Vocational Nursing	7
AA General Studies: Emphasis in Social Science	5
AA University Studies: Emphasis in Natural Science	3
Fire Technology Certificate of Achievement	3
Associate in Science Degree - Fire Technology	3
<b>2010-11</b>	<b>Grads</b>
CSU General Education Certification	23
CSU General Education Certificate of Achievement	23
AA University Studies: Emphasis in Social Science	10
AA General Studies: Emphasis in Social Science	5
AA University Studies: Emphasis in Allied Health	4
University Studies: CSU A.A. Degree	3
AA University Studies: Business Administration	2
Administration of Justice Certificate of Achievement	2
A.S. Vocational Nursing	2
Vocational Nursing Certificate of Achievement	2

# SECTIONS

## SECTIONS

### SECTIONS BY MODALITY AND DAY/EVENING

AY 2007-2008 to 2011-2012

#### All Sections

	2007-08	2008-09	2009-10	2010-11	2011-12
Traditional	703	722	725	755	654
Correspondence	163	171	238	260	214
Online	10	24	34	32	23
<b>Total Credit Courses</b>	<b>876</b>	<b>917</b>	<b>997</b>	<b>1047</b>	<b>891</b>

#### Traditional Sections by Day/Evening

	2007-08	2008-09	2009-10	2010-11	2011-12
Day	531	552	564	609	531
Evening	172	170	161	146	123
<b>Total Non-Credit Courses</b>	<b>703</b>	<b>722</b>	<b>725</b>	<b>755</b>	<b>654</b>

#### FTES by Modality by Academic Year

	2007-08	2008-09	2009-10	2010-11	2011-12
Traditional	984.6	1043.9	1093.1	1270.8	1125.8
Correspondence	419.1	423.7	560.0	661.1	540.3
Online	19.5	54.5	54.4	71.4	49.8
<b>Total FTES</b>	<b>1423.2</b>	<b>1522.1</b>	<b>1707.5</b>	<b>2003.3</b>	<b>1715.9</b>



# SECTIONS

## SECTION DAYS BY ACADEMIC YEAR 2008-2009 to 2011-2012

Days	2008-09	2009-10	2010-11	2011-2012	Grand Total
F	17	10	13	8	48
FS		1	2		3
FSSu	1	1	1	2	5
M	25	25	26	25	101
MF		1			1
MS			1		1
MFS				1	1
MT	2	2	2	2	8
MTh	5	1		1	7
MTTh	3	2	2	2	9
MTThF		2	1	2	5
MTW	1			1	2
MTWF	1		2	2	5
MTWSSu	1				1
MTWTh	27	28	26	28	109
MTWThF	118	120	120	109	467
MTWThFS			3	2	5
MTWThFSSu	1	8	12		21
MW	83	94	91	62	330
MWF	63	57	62	64	246
MWS	1	1		1	3
MWTh			1		1
MWThF	4	8	6	3	21
S	36	26	18	13	93
SSu	3	3	1	3	10
Su	2	4	5		11
T	37	43	39	27	146
TBA	100	90	108	102	400
Th	24	32	32	6	94
ThF	1	1	2	1	5
ThFS		1		2	3
ThS	5	5	4		14
TTh	101	108	90	98	397
TThF			1		1
TThS	3	1			4
TThSSu				1	1
TW	9	4	2	2	17
TWTh	11	7	6	7	31
TWThF	7	7	42	52	108
TWThFS			3	1	4
TWThFSSu			1		1
W	26	31	27	22	106
WF		1	1		2
WS	1				1
WSSu			1		1
WTh	3				3
WThF			1	1	2
<b>Grand Total</b>	<b>722</b>	<b>725</b>	<b>755</b>	<b>654</b>	<b>2856</b>

## SECTIONS

### SECTION MODALITY BY TERM

Fall 2007 to Spring 2012

	Traditional		Distance Learning		Grand Total
	Main Campus Courses	Off-Campus Courses	Correspondence Courses	On-line Courses	
<b>Fall 2007</b>	300	28	71	4	403
%	74.4%	6.9%	17.6%	1.0%	100%
<b>Spring 2008</b>	289	28	55	4	376
%	76.9%	7.4%	14.6%	1.1%	100%
<b>Summer 2008</b>	82	12	36	1	131
%	62.6%	9.2%	27.5%	0.8%	100%
<b>Fall 2008</b>	307	22	65	7	401
%	76.6%	5.5%	16.2%	1.7%	100%
<b>Spring 2009</b>	321	25	71	16	433
%	74.1%	5.8%	16.4%	3.7%	100%
<b>Summer 2009</b>	110	6	51	4	171
%	64.3%	3.5%	29.8%	2.3%	100%
<b>Fall 2009</b>	290	10	100	12	412
%	70.4%	2.4%	24.3%	2.9%	100%
<b>Spring 2010</b>	310	16	86	18	430
%	72.1%	3.7%	20.0%	4.2%	100%
<b>Summer 2010</b>	109	2	51	4	166
%	65.7%	1.2%	30.7%	2.4%	100%
<b>Fall 2010</b>	312	10	97	13	432
%	72.2%	2.3%	22.5%	3.0%	100%
<b>Spring 2011</b>	309	13	112	15	449
%	68.8%	2.9%	24.9%	3.3%	100%
<b>Summer 2011</b>	83	0	54	2	139
%	59.7%	0.0%	38.8%	1.4%	100%
<b>Fall 2011</b>	272	1	63	9	345
%	78.8%	0.3%	18.3%	2.6%	100%
<b>Spring 2012</b>	290	8	97	12	407
%	71.3%	2.0%	23.8%	2.9%	100%

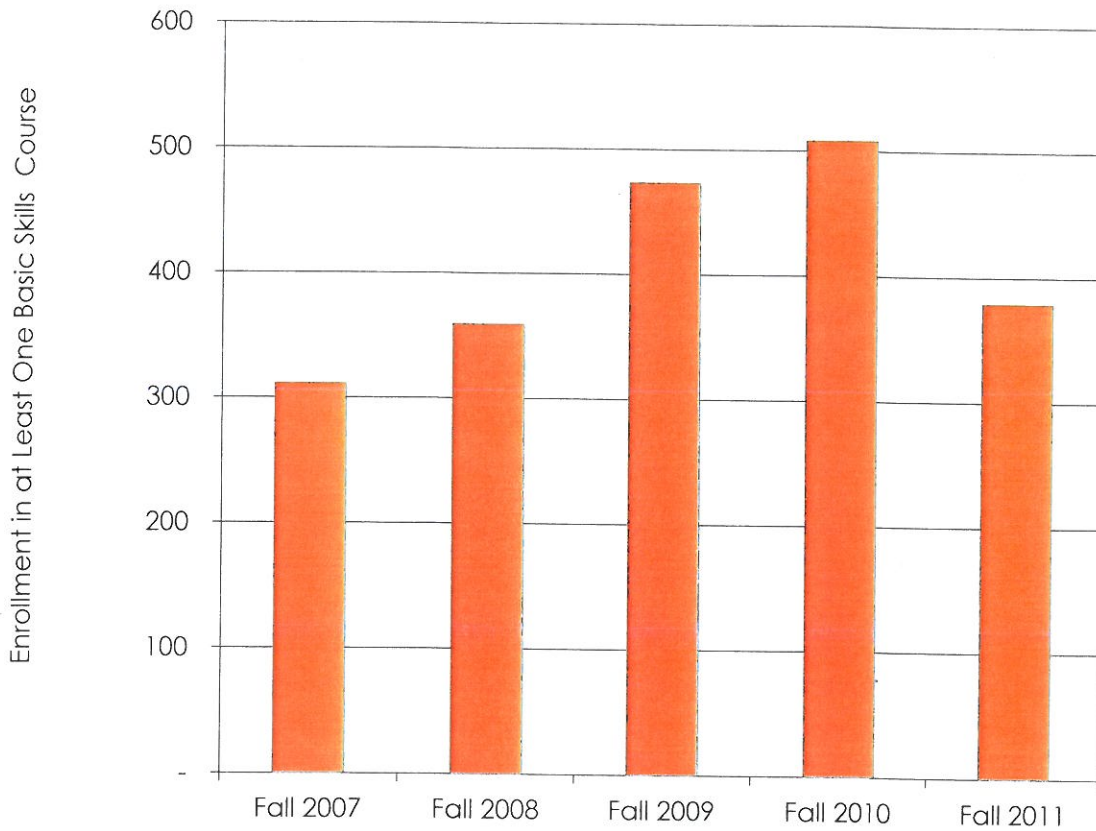
# BASIC SKILLS



# BASIC SKILLS ENROLLMENT

TOTAL ENROLLMENT

Fall 2007 to Fall 2011



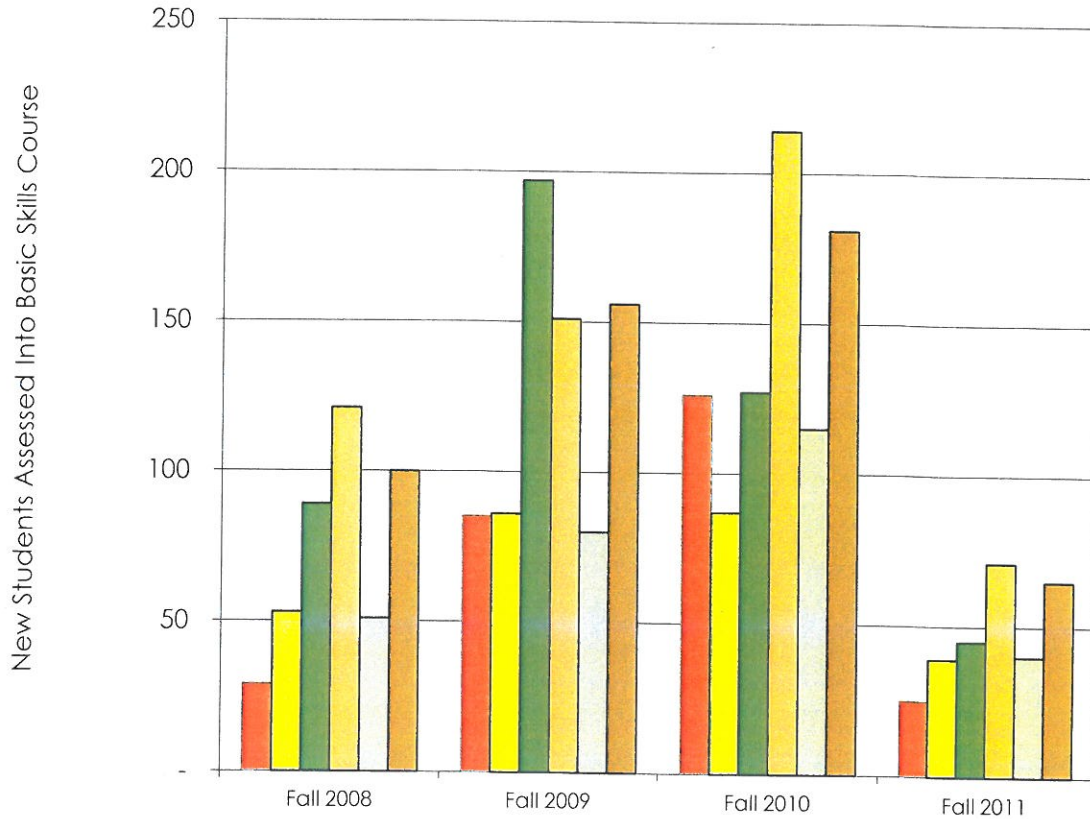
	Number of Students Enrolled in at Least One Basic Skills Course	Yearly Percent Change
<b>Fall 2007</b>	311	
<b>Fall 2008</b>	359	15.4%
<b>Fall 2009</b>	473	31.8%
<b>Fall 2010</b>	508	7.4%
<b>Fall 2011</b>	379	-25.4%

This is an unduplicated count of students

# BASIC SKILLS ASSESSMENT

TOTAL NEW STUDENTS ASSESSED AS REQUIRING BASIC SKILLS COURSEWORK

Fall 2007 to Fall 2011



NUMBER	Fall 2007	Fall 2008	Fall 2009	Fall 2010	Fall 2011
English 102	38	29	85	126	25
English 103	57	53	86	87	39
Math 101	92	89	197	127	45
Math 102	93	121	151	214	71
Reading 101	60	51	80	115	40
Reading 51	70	100	156	181	65
<b>%</b>	<b>Fall 2007</b>	<b>Fall 2008</b>	<b>Fall 2009</b>	<b>Fall 2010</b>	<b>Fall 2011</b>
English 102	7.8%	6.4%	12.7%	10.5%	3.7%
English 103	11.8%	11.7%	12.9%	7.3%	5.8%
Math 101	19.0%	19.6%	29.5%	10.6%	6.7%
Math 102	19.2%	26.7%	22.6%	17.9%	10.6%
Reading 101	12.4%	11.2%	12.0%	9.6%	6.0%
Reading 51	14.4%	22.0%	23.4%	15.1%	9.7%
<b>Total New Students</b>	<b>485</b>	<b>454</b>	<b>668</b>	<b>1198</b>	<b>669</b>



# LCCD EMPLOYEES



# LCCD EMPLOYEES

## EMPLOYEE JOB CATEGORY BY POSITIONS

Headcount Fall 2005 to Fall 2011

	Exec/ Admin/ Managerial	Tenured/ Tenure Track	Academic Temporary	Professional, Other	Clerical/ Secretary	Technical Paraprofessional	Skilled Crafts	Service / Maintenance	Total
<b>Fall 2005</b>	9	42	82	4	18	32	6	8	201
<b>%</b>	4.5%	20.9%	40.8%	2.0%	9.0%	15.9%	3.0%	4.0%	100%
<b>Fall 2006</b>	13	40	93	2	18	33	6	9	214
<b>%</b>	6.1%	18.7%	43.5%	0.9%	8.4%	15.4%	2.8%	4.2%	100%
<b>Fall 2007</b>	10	38	88	10	15	35	5	9	210
<b>%</b>	4.8%	18.1%	41.9%	4.8%	7.1%	16.7%	2.4%	4.3%	100%
<b>Fall 2008</b>	15	38	81	7	15	34	5	8	203
<b>%</b>	7.4%	18.7%	39.9%	3.4%	7.4%	16.7%	2.5%	3.9%	100%
<b>Fall 2009</b>	12	38	92	8	12	31	5	7	205
<b>%</b>	5.9%	18.5%	44.9%	3.9%	5.9%	15.1%	2.4%	3.4%	100%
<b>Fall 2010</b>	11	41	96	7	11	33	6	7	212
<b>%</b>	5.2%	19.3%	45.3%	3.3%	5.2%	15.6%	2.8%	3.3%	100%
<b>Fall 2011</b>	16	40	66	2	11	32	6	5	176
<b>%</b>	9.1%	22.7%	37.5%	1.1%	6.3%	18.2%	3.4%	2.8%	100%

# EMPLOYEES

## LCCD EMPLOYEES\*: GENDER, AGE, YEARS OF SERVICE

Fall 2010 and Fall 2011

### Fall 2010

		Female	Male	Total
<b>Fall 2010 Gender</b>		68	49	117
	%	58.1%	41.9%	100.0%

		27-39 years	40-49 years	50-59 years	60-68 years	Total
<b>Fall 2010 Age</b>		14	32	47	24	117
	%	12.0%	27.4%	40.2%	20.5%	100.0%

		0-3 years	4-9 years	10-14 years	15-23 years	24-36 years	Total	Average Years Service
<b>Fall 2010 Years of Service</b>		24	28	30	24	11	117	11.4
	%	20.5%	23.9%	25.6%	20.5%	9.4%	100.0%	

### Fall 2011

		Female	Male	Total
<b>Fall 2011 Gender</b>		63	48	111
	%	56.8%	43.2%	100.0%

		28-39 years	40-49 years	50-59 years	60-70 years	Total
<b>Fall 2011 Age</b>		16	30	39	26	111
	%	14.4%	27.0%	35.1%	23.4%	0.0%

		0-3 years	4-9 years	10-14 years	15-23 years	24-36 years	Total	Average Years Service
<b>Fall 2011 Years of Service</b>		25	24	25	28	9	111	11.2
	%	22.5%	21.6%	22.5%	25.2%	8.1%	100.0%	

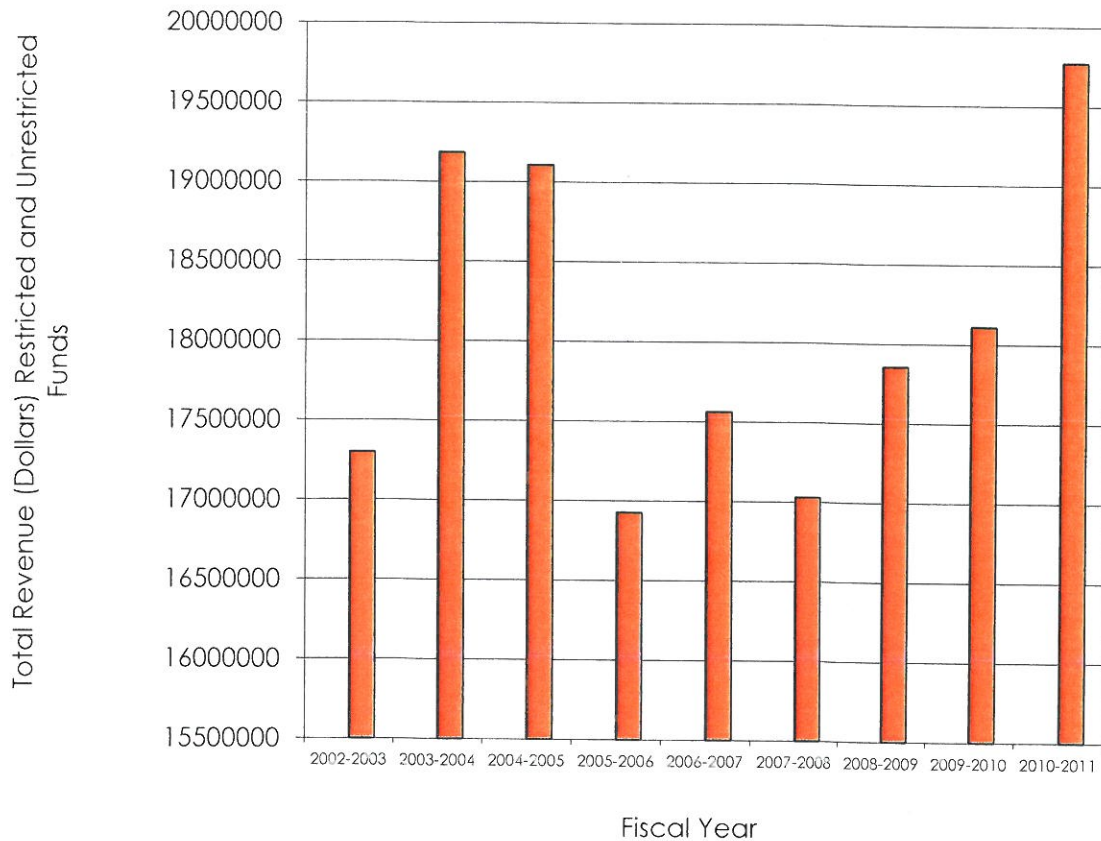
\*Excludes Adjunct Faculty

REVENUES AND EXPENDITURES



# REVENUES

ACTUAL REVENUES: RESTRICTED AND UNRESTRICTED  
Fiscal Years 2003 to 2011

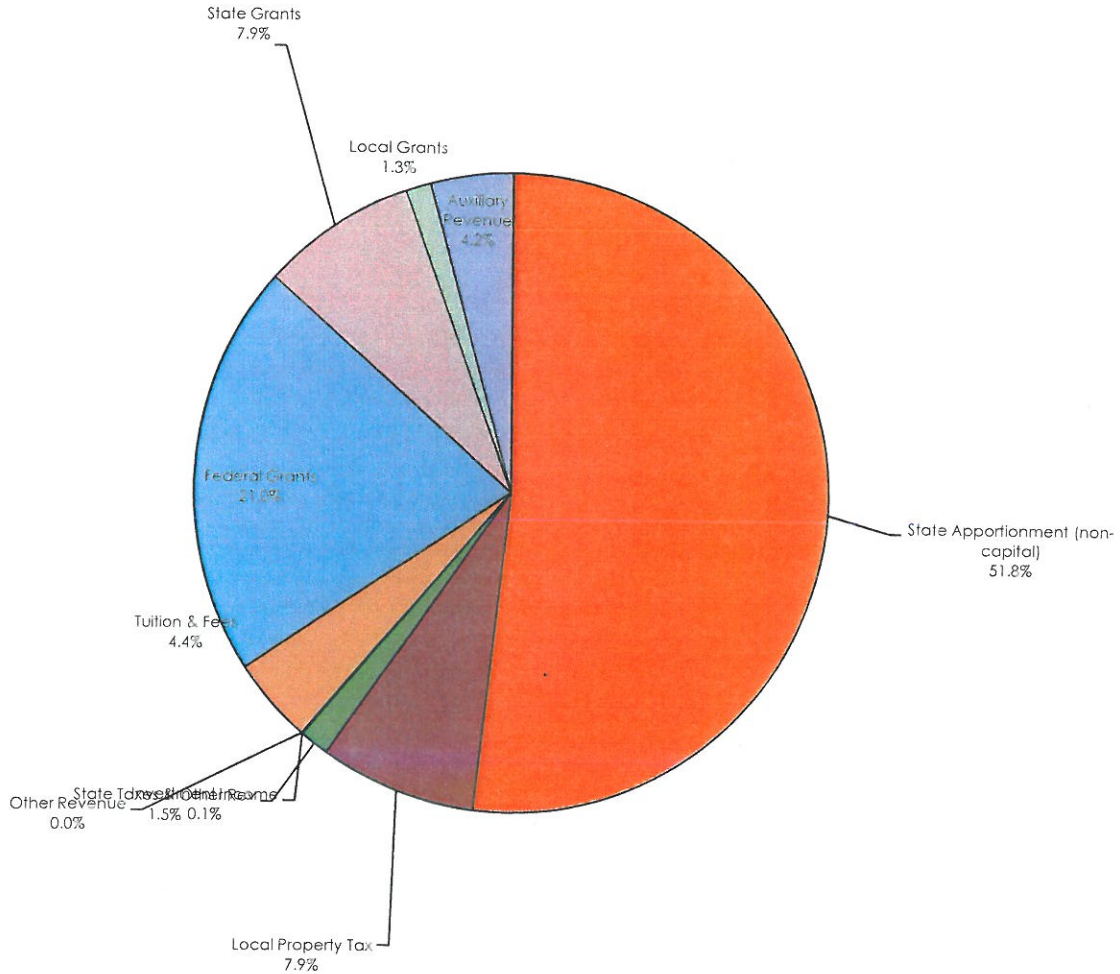


Fiscal Year	Total Revenues: Restricted and Unrestricted Funds	Yearly Percent Change
2002-2003	17,299,019	
2003-2004	19,185,230	9.8%
2004-2005	19,106,674	-0.4%
2005-2006	16,927,663	-12.9%
2006-2007	17,562,178	3.6%
2007-2008	17,030,541	-3.1%
2008-2009	17,857,016	4.6%
2009-2010	18,110,692	1.4%
2010-2011	19,774,855	8.4%

Source: LCCD Administrative Services: Audit Reports

# REVENUES

ACTUAL REVENUES: RESTRICTED AND UNRESTRICTED  
Fiscal Year 2010-2011

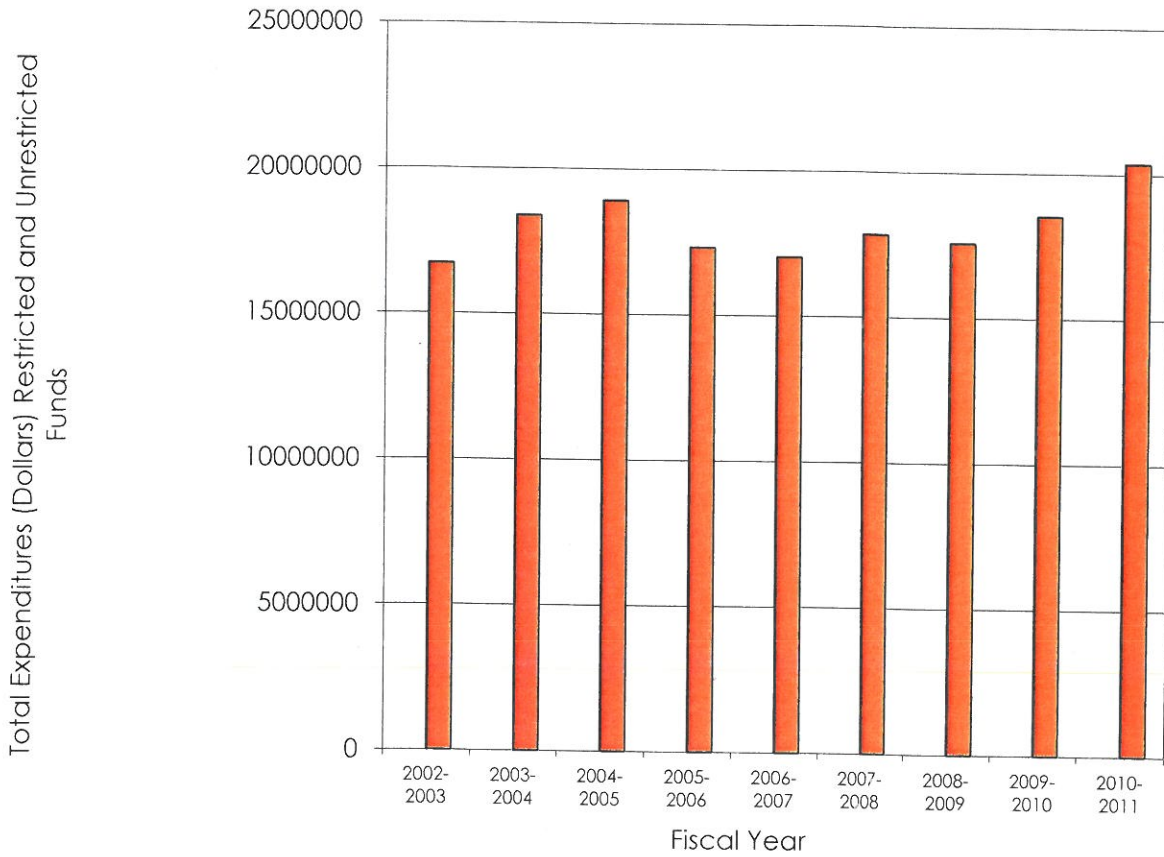


Revenues: Restricted and Unrestricted	Amount	Percent of Total Revenues
State Apportionment (non-capital)	10,243,484	51.8%
Local Property Tax	1,568,377	7.9%
State Taxes & Other Rev	294,072	1.5%
Investment Income	12,940	0.1%
Other Revenue	-	0.0%
Tuition & Fees	861,903	4.4%
Federal Grants	4,147,795	21.0%
State Grants	1,560,412	7.9%
Local Grants	252,647	1.3%
Auxiliary Revenue	833,225	4.2%
<b>Total Revenue</b>	<b>19,774,855</b>	<b>100%</b>

Source: LCCD Administrative Services: Audit Reports

# EXPENDITURES

ACTUAL EXPENDITURES: RESTRICTED AND UNRESTRICTED  
Fiscal Years 2003-2004 to 2009-2010



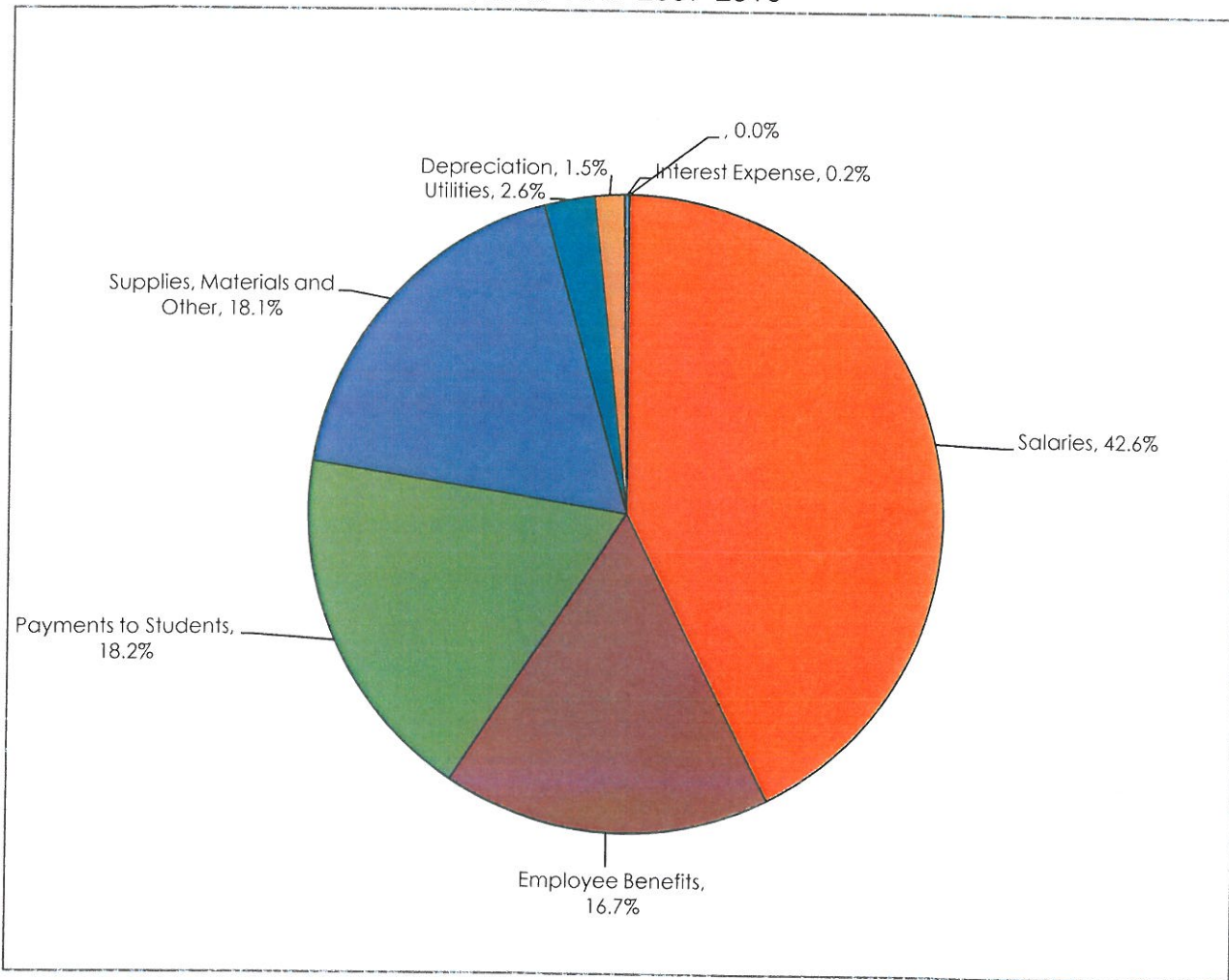
Fiscal Year	Total Expenditures: Restricted and Unrestricted Funds	Yearly Percent Change
2002-2003	16,724,816	
2003-2004	18,385,585	9.0%
2004-2005	18,912,796	2.8%
2005-2006	17,327,302	-9.2%
2006-2007	17,030,565	-1.7%
2007-2008	17,846,556	4.6%
2008-2009	17,582,741	-1.5%
2009-2010	18,534,424	5.1%
2010-2011	20,375,131	9.0%

Source: LCCD Administrative Services: Audit Reports



# EXPENDITURES

ACTUAL EXPENDITURES: RESTRICTED AND UNRESTRICTED  
Fiscal Year 2009-2010



Expenditures: Restricted and Unrestricted	Amount	Percent of Total Expenditures
Salaries	8,685,238	42.6%
Employee Benefits	3,394,824	16.7%
Payments to Students	3,716,707	18.2%
Supplies, Materials and Other	3,696,699	18.1%
Utilities	523,900	2.6%
Depreciation	310,889	1.5%
Interest Expense	46,874	0.2%
<b>Total Expenditures</b>	<b>20,375,131</b>	<b>100%</b>

Source: LCCD Administrative Services: Audit Reports

# PROGRAM SPECIFIC DATA



# STUDENTS

## STUDENT OUTCOMES BY MODALITY

Fall 2008 to Fall 2011

	Fall 2008	All Fall 2008	Fall 2009	All Fall 2009	Fall 2010	All Fall 2010	Fall 2011	All Fall 2011
<b>Incarcerated Correspondence Students</b>	<b>17.28%</b>	<b>1,852</b>	<b>29.56%</b>	<b>2,341</b>	<b>27.57%</b>	<b>3,029</b>	<b>25.41%</b>	<b>2,503</b>
Course Retention Rate	81.48%	86.16%	81.48%	83.48%	80.00%	84.89%	92.12%	91.89%
Course Success Rate	65.49%	71.49%	53.14%	66.11%	60.74%	68.64%	71.32%	73.11%
Transfer Ready Rate	0.00%	1.84%	0.00%	1.67%	0.00%	1.16%	0.00%	1.16%
Next Term Persistence Rate	66.25%	63.39%	40.61%	53.52%	66.71%	51.54%	69.50%	52.38%
Next Year Persistence Rate	41.25%	39.09%	27.31%	34.86%	51.74%	25.62%	13.68%	16.30%
Avg. GPA	2.77	2.84	2.37	2.62	2.55	2.63	2.70	2.64
Avg. Units Enrolled	8.5	7.6	6.5	7.3	6.3	6.7	5.0	6.5
<b>Non-Incarcerated Correspondence Students</b>	<b>19.38%</b>	<b>1,852</b>	<b>20.76%</b>	<b>2,341</b>	<b>14.96%</b>	<b>3,029</b>	<b>13.34%</b>	<b>2,503</b>
Course Retention Rate	85.35%	86.16%	85.35%	83.48%	78.92%	84.89%	86.14%	91.89%
Course Success Rate	68.50%	71.49%	62.49%	66.11%	58.95%	68.64%	66.92%	73.11%
Transfer Ready Rate	3.62%	1.84%	2.67%	1.67%	3.09%	1.16%	2.10%	1.16%
Next Term Persistence Rate	64.35%	63.39%	59.88%	53.52%	58.50%	51.54%	63.47%	52.38%
Next Year Persistence Rate	33.70%	39.09%	43.62%	34.86%	23.62%	25.62%	23.65%	16.30%
Avg. GPA	2.59	2.84	2.41	2.62	2.40	2.63	2.44	2.64
Avg. Units Enrolled	10.4	7.6	10.7	7.3	10.5	6.7	10.0	6.5
	<b>2008FA</b>	<b>All 2008FA</b>	<b>2009FA</b>	<b>All 2009FA</b>	<b>2010FA</b>	<b>All 2010FA</b>	<b>2011FA</b>	<b>All 2011FA</b>
<b>All Other Students</b>	<b>63.28%</b>	<b>1,852</b>	<b>49.68%</b>	<b>2,341</b>	<b>57.48%</b>	<b>3,029</b>	<b>61.25%</b>	<b>2,503</b>
Course Retention Rate	87.82%	86.16%	87.82%	83.48%	89.46%	84.89%	93.58%	91.89%
Course Success Rate	74.41%	71.49%	74.53%	66.11%	76.03%	68.64%	75.48%	73.11%
Transfer Ready Rate	1.79%	1.84%	2.24%	1.67%	1.21%	1.16%	1.44%	1.16%
Next Term Persistence Rate	62.37%	63.39%	58.56%	53.52%	42.45%	51.54%	42.86%	52.38%
Next Year Persistence Rate	40.19%	39.09%	35.68%	34.86%	13.61%	25.62%	15.79%	16.30%
Avg. GPA	2.97	2.84	2.91	2.62	2.81	2.63	2.66	2.64
Avg. Units Enrolled	6.5	7.6	6.3	7.3	5.9	6.7	6.4	6.5



# STUDENTS

## STUDENT OUTCOMES BY MODALITY

Spring 2009 to Spring 2012

	Spring 2009	All Spring 2009	Spring 2010	All Spring 2010	Spring 2011	All Spring 2011	Spring 2012	All Spring 2012
<b>Incarcerated Correspondence Students</b>	12.19%	3,010	19.24%	3,462	26.31%	4,021	25.78%	3,379
Course Retention Rate	74.09%	85.64%	74.09%	88.95%	82.42%	87.62%	83.22%	89.28%
Course Success Rate	64.35%	73.16%	55.01%	73.36%	60.47%	70.41%	68.83%	73.18%
Transfer Ready Rate	0.00%	2.26%	0.00%	1.85%	0.00%	1.44%	0.00%	1.92%
Next Term Persistence Rate	50.14%	32.39%	49.40%	31.66%	56.05%	26.24%	14.35%	14.95%
Next Year Persistence Rate	23.43%	38.07%	43.99%	37.84%	0.00%	0.00%	0.00%	0.00%
Avg. GPA	3.05	3.23	2.27	3.04	2.47	2.85	2.80	2.73
Avg. Units Enrolled	8.8	5.5	6.4	5.1	6.3	5.5	5.8	5.7
<b>Non-Incarcerated Correspondence Students</b>	14.19%	3,010	13.46%	3,462	11.02%	4,021	13.76%	3,379
Course Retention Rate	83.87%	85.64%	83.87%	88.95%	84.78%	87.62%	87.07%	89.28%
Course Success Rate	66.09%	73.16%	66.55%	73.36%	61.00%	70.41%	65.85%	73.18%
Transfer Ready Rate	4.45%	2.26%	4.51%	1.85%	3.61%	1.44%	6.45%	1.92%
Next Term Persistence Rate	50.12%	32.39%	50.43%	31.66%	32.28%	26.24%	29.25%	14.95%
Next Year Persistence Rate	35.83%	38.07%	40.13%	37.84%	0.00%	0.00%	0.00%	0.00%
Avg. GPA	2.61	3.23	2.50	3.04	2.33	2.85	2.50	2.73
Avg. Units Enrolled	10.7	5.5	10.6	5.1	10.6	5.5	10.6	5.7
	2009SP	All 2009SP	2010SP	All 2010SP	2011SP	All 2011SP	2012SP	All 2012SP
<b>All Other Students</b>	73.59%	3,010	67.30%	3,462	62.67%	4,021	60.46%	3,379
Course Retention Rate	89.18%	85.64%	89.18%	88.95%	91.04%	87.62%	92.31%	89.28%
Course Success Rate	78.01%	73.16%	82.00%	73.36%	78.33%	70.41%	77.72%	73.18%
Transfer Ready Rate	2.21%	2.26%	1.85%	1.85%	1.67%	1.44%	1.71%	1.92%
Next Term Persistence Rate	26.00%	32.39%	22.83%	31.66%	12.66%	26.24%	11.94%	14.95%
Next Year Persistence Rate	40.90%	38.07%	35.62%	37.84%	0.00%	0.00%	0.00%	0.00%
Avg. GPA	3.39	3.23	3.44	3.04	3.24	2.85	2.79	2.73
Avg. Units Enrolled	3.9	5.5	3.7	5.1	4.3	5.5	4.6	5.7

# STUDENTS

## STUDENT OUTCOMES BY MODALITY Summer 2008 to Summer 2011

	Summer 2008	All Summer 2008	Summer 2009	All Summer 2009	Summer 2010	All Summer 2010	Summer 2011	All Summer 2011
<b>Incarcerated Correspondence Students</b>	24.28%	1,013	29.45%	1,467	30.86%	2,009	37.86%	1,685
Course Retention Rate	89.44%	93.49%	89.44%	85.80%	85.30%	90.39%	90.88%	92.40%
Course Success Rate	77.23%	83.15%	59.43%	74.16%	70.15%	78.78%	70.60%	78.16%
Transfer Ready Rate	0.00%	1.28%	0.00%	1.16%	0.00%	0.60%	0.00%	0.77%
Next Term Persistence Rate	64.23%	48.96%	67.13%	57.33%	74.84%	53.51%	80.41%	50.62%
Next Year Persistence Rate	30.89%	25.17%	18.29%	20.65%	41.45%	23.15%	54.55%	29.85%
Avg. GPA	3.11	3.15	2.69	2.93	2.84	2.92	2.70	2.72
Avg. Units Enrolled	5.2	4.1	5.0	3.5	4.3	3.2	5.0	4.1
<b>Non-Incarcerated Correspondence Students</b>	25.86%	1,013	19.84%	1,467	11.10%	2,009	13.35%	1,685
Course Retention Rate	89.66%	93.49%	89.66%	85.80%	81.51%	90.39%	86.83%	92.40%
Course Success Rate	70.50%	83.15%	67.34%	74.16%	65.07%	78.78%	66.34%	78.16%
Transfer Ready Rate	3.05%	1.28%	2.41%	1.16%	3.14%	0.60%	1.33%	0.77%
Next Term Persistence Rate	64.12%	48.96%	69.42%	57.33%	69.51%	53.51%	71.11%	50.62%
Next Year Persistence Rate	21.76%	25.17%	23.37%	20.65%	17.49%	23.15%	22.67%	29.85%
Avg. GPA	2.61	3.15	2.64	2.93	2.77	2.92	2.46	2.72
Avg. Units Enrolled	6.0	4.1	5.6	3.5	5.7	3.2	5.3	4.1
<b>All Other Students</b>	49.65%	1,013	50.58%	1,467	57.99%	2,009	48.78%	1,685
Course Retention Rate	98.31%	93.49%	98.31%	85.80%	97.60%	90.39%	95.99%	92.40%
Course Success Rate	95.07%	83.15%	93.27%	74.16%	90.50%	78.78%	90.06%	78.16%
Transfer Ready Rate	0.99%	1.28%	1.35%	1.16%	0.43%	0.60%	1.22%	0.77%
Next Term Persistence Rate	33.40%	48.96%	47.04%	57.33%	39.06%	53.51%	21.90%	50.62%
Next Year Persistence Rate	23.86%	25.17%	20.89%	20.65%	14.51%	23.15%	12.65%	29.85%
Avg. GPA	3.66	3.15	3.40	2.93	3.17	2.92	3.05	2.72
Avg. Units Enrolled	2.6	4.1	1.8	3.5	2.2	3.2	3.1	4.1

# COURSE OUTCOMES BY MODALITY

## STUDENT OUTCOMES BY MODALITY

Summer 2007 to Spring 2012

Term	Main Campus			Off Campus			Total Face to Face Courses	Face to Face Retention	Face to Face Success
	Courses	Retention	Success	Courses	Retention	Success			
2007SU	85	95.8%	91.8%	15	97.6%	94.1%	100	96.0%	92.0%
2007FA	276	88.9%	78.4%	28	93.9%	89.8%	304	89.2%	79.0%
2008SP	273	87.4%	76.2%	26	91.7%	85.9%	299	87.7%	76.9%
2008SU	76	97.6%	94.2%	12	100.0%	95.3%	88	98.1%	94.5%
2008FA	287	87.4%	74.3%	21	91.6%	84.4%	308	87.6%	74.7%
2009SP	304	88.6%	76.9%	22	98.0%	96.1%	326	89.6%	79.0%
2009SU	94	96.6%	91.8%	5	100.0%	100.0%	99	96.7%	92.2%
2009FA	290	87.8%	74.4%	10	88.4%	88.4%	300	87.9%	74.5%
2010SP	310	91.8%	81.1%	16	99.3%	95.7%	326	92.2%	81.9%
2010SU	109	96.7%	89.2%	2	100.0%	100.0%	111	96.7%	89.5%
2010FA	312	88.4%	74.5%	10	87.9%	81.8%	322	88.4%	74.6%
2011SP	309	89.9%	76.4%	13	98.8%	98.0%	322	90.3%	77.4%
2011SU	83	96.1%	89.4%				83	96.10%	89.30%
2011FA	272	93.4%	75.8%	1	100.0%	100.0%	273	93.40%	75.80%
2012SP	290	91.8%	76.0%	8	95.4%	94.2%	298	91.90%	76.90%

Term	Correspondence			On-line Courses	On-line Retention	On-line Success
	Courses	Retention	Success			
2007SU	38	92.5%	80.1%	2	90.9%	54.5%
2007FA	71	71.8%	53.3%	4	73.2%	39.0%
2008SP	54	81.4%	63.2%	4	74.0%	41.1%
2008SU	36	89.0%	72.2%	1	85.7%	71.4%
2008FA	64	83.5%	65.3%	7	73.6%	48.1%
2009SP	71	76.5%	62.4%	16	73.9%	39.0%
2009SU	52	78.0%	61.4%	4	86.0%	72.1%
2009FA	100	76.5%	53.2%	12	76.3%	46.2%
2010SP	86	81.9%	55.1%	18	79.7%	48.1%
2010SU	51	84.2%	67.9%	4	81.8%	71.2%
2010FA	97	78.2%	58.3%	13	81.9%	51.5%
2011SP	112	82.8%	59.6%	15	85.7%	45.5%
2011SU	54	89.3%	69.2%	2	90.4%	61.9%
2011FA	63	88.5%	67.5%	9	80.5%	49.3%
2012SP	97	83.0%	65.8%	12	88.4%	58.9%



# COURSE OUTCOMES BY MODALITY

## STUDENT OUTCOMES BY MODALITY

Academic Year 2007-08 to 2011-12

Year	Main Campus Courses	Main Campus Retention	Main Campus Success	Off Campus Courses	Off Campus Retention	Off Campus Success	Total Face to Face Courses	Face to Face Retention	Face to Face Success
2007-08	634	88.9%	78.8%	69	93.5%	88.7%	703	89.2%	79.4%
2008-09	667	88.8%	77.1%	55	97.2%	93.8%	722	89.6%	78.7%
2009-10	694	90.6%	79.2%	31	98.1%	95.3%	725	90.9%	79.8%
2010-11	730	90.0%	77.0%	25	96.8%	95.1%	755	90.2%	77.5%
2011-12	645	92.9%	77.4%	9	95.6%	94.4%	654	93.0%	77.8%

Term	Correspondence Courses	Correspondence Retention	Correspondence Success	On-line Courses	On-line Retention	On-line Success
2007-08	163	79.2%	61.9%	10	74.7%	41.0%
2008-09	171	81.7%	65.5%	24	74.0%	42.3%
2009-10	238	78.8%	55.7%	34	78.9%	49.6%
2010-11	260	81.3%	60.6%	32	83.8%	50.8%
2011-12	214	86.5%	67.3%	23	85.3%	55.2%

# CATEGORICAL PROGRAM STUDENTS

## NUMBER AND PERCENTAGE OF STUDENTS IN CATEGORICAL PROGRAMS 2007-08 to 2011-12

### Categorical Programs (unduplicated)

2007-08	Headcount	EOPS	%	CARE	%	DSPS*	%	CalWORKs	%
Female	1,479	209	14.1%	38	2.6%	-	0.0%	94	6.4%
Male	1,887	307	16.3%	2	0.1%	-	0.0%	17	0.9%
Unknown	8	1	12.5%	-	0.0%	-	0.0%	-	0.0%
<b>Total</b>	<b>3,374</b>	<b>517</b>	<b>15.3%</b>	<b>40</b>	<b>1.2%</b>	<b>0</b>	<b>0.0%</b>	<b>111</b>	<b>3.3%</b>

2008-09	Headcount	EOPS	%	CARE	%	DSPS	%	CalWORKs	%
Female	1,495	210	14.0%	29	1.9%	118	7.9%	78	5.2%
Male	2,638	232	8.8%	1	0.0%	81	3.1%	17	0.6%
Unknown	13	1	7.7%	-	0.0%	-	0.0%	1	7.7%
<b>Total</b>	<b>4,146</b>	<b>443</b>	<b>10.7%</b>	<b>30</b>	<b>0.7%</b>	<b>199</b>	<b>4.8%</b>	<b>96</b>	<b>2.3%</b>

2009-10	Headcount	EOPS	%	CARE	%	DSPS	%	CalWORKs	%
Female	1,529	157	10.3%	18	1.2%	134	8.8%	81	5.3%
Male	3,581	93	2.6%	3	0.1%	83	2.3%	26	0.7%
Unknown	5	1	20.0%	-	0.0%	-	0.0%	-	0.0%
<b>Total</b>	<b>5,115</b>	<b>251</b>	<b>4.9%</b>	<b>21</b>	<b>0.4%</b>	<b>217</b>	<b>4.2%</b>	<b>107</b>	<b>2.1%</b>

2010-11	Headcount	EOPS	%	CARE	%	DSPS	%	CalWORKs	%
Female	1,475	151	10.2%	21	1.4%	118	8.0%	82	5.6%
Male	4,862	103	2.1%	2	0.0%	79	1.6%	18	0.4%
<b>Total</b>	<b>6,337</b>	<b>254</b>	<b>4.0%</b>	<b>23</b>	<b>0.4%</b>	<b>197</b>	<b>3.1%</b>	<b>100</b>	<b>1.6%</b>

2011-2012	Headcount	EOPS	%	CARE	%	DSPS	%	CalWORKs	%
Female	1,070	130	12.1%	19	1.8%	96	9.0%	78	7.3%
Male	4,256	87	2.0%	1	0.0%	83	2.0%	17	0.4%
<b>Total</b>	<b>5,326</b>	<b>217</b>	<b>4.0%</b>	<b>20</b>	<b>1.8%</b>	<b>179</b>	<b>10.9%</b>	<b>95</b>	<b>7.7%</b>

\*NOTE: DSPTS information not available for 07/08

# ATHLETES BY SPORT

2007-08 to 2011-12

2007-08	Students
Varsity Baseball	37
Varsity Wrestling	23
Men's Varsity Soccer	15
Women's Varsity Soccer	14
Women's Varsity Softball	14
Women's Varsity Volleyball	14
Women's Varsity Basketball	13
Intercollegiate Men's Rodeo	11
Men's Varsity Basketball	11
<b>Total (unduplicated)</b>	<b>151</b>

2010-2011	Students
Varsity Baseball	29
Varsity Wrestling	21
Men's Varsity Soccer	31
Women's Varsity Soccer	0
Women's Varsity Softball	12
Women's Varsity Volleyball	9
Women's Varsity Basketball	11
Intercollegiate Men's Rodeo	26
Men's Varsity Basketball	15
<b>Total (unduplicated)</b>	<b>154</b>

2008-09	Students
Varsity Wrestling	29
Varsity Baseball	28
Intercollegiate Rodeo	17
Women's Varsity Basketball	15
Men's Varsity Basketball	14
Women's Varsity Softball	10
Women's Varsity Volleyball	9
<b>Total (unduplicated)</b>	<b>118</b>

2009-10	Students
Rodeo Team Roping	38
Intercollegiate Rodeo	21
Varsity Baseball	20
Men's Varsity Basketball	18
Women's Varsity Softball	15
Varsity Wrestling	14
Women's Varsity Soccer	13
Women's Varsity Volleyball	9
Women's Varsity Basketball	8
<b>Total (unduplicated)</b>	<b>155</b>

2010-11	Students
Men's Varsity Soccer	28
Varsity Baseball	22
Intercollegiate Rodeo	20
Women's Varsity Softball	16
Men's Varsity Basketball	15
Women's Varsity Soccer	15
Women's Varsity Basketball	13
Women's Varsity Volleyball	11
Rodeo Team Roping	10
Varsity Wrestling	9
<b>Total (unduplicated)</b>	<b>154</b>

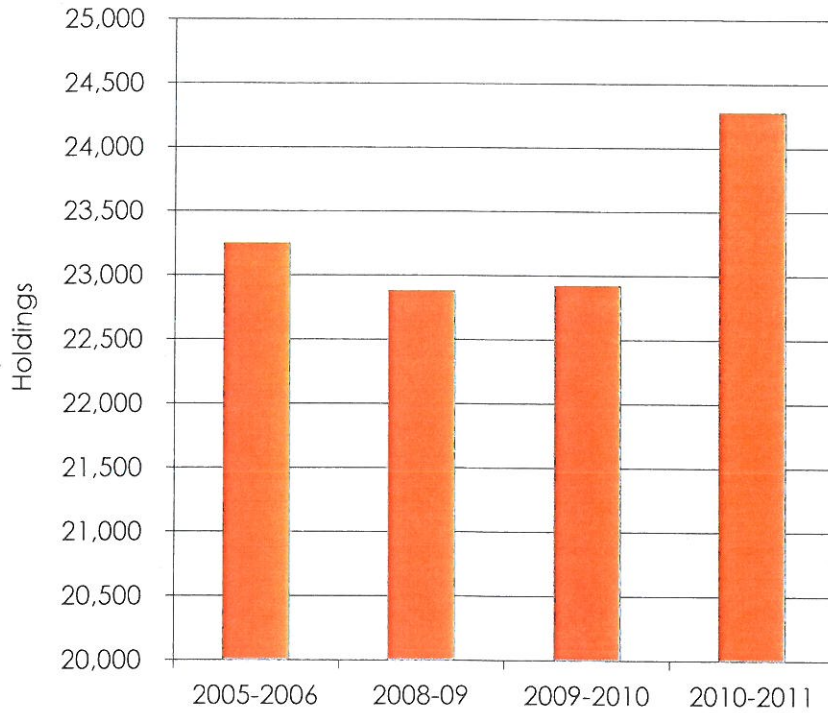


LIBRARY

# LIBRARIES

## LIBRARY HOLDINGS

Fiscal Year 2003-2004 to 2009-2010



### LCCD Library Holdings

	Baseline 2005-2006	2008-09	2009-2010	2010-2011
<b>Holdings*</b>	23,245	22,879	22,921	24,277
<b>Fiscal Year Percent Change from baseline 2005-2006</b>		-1.57%	0.18%	5.92%
<b>Number of current serials</b>				49
<b>Number of electronic books</b>		19,625	20,662	20,306

### Library Services 2007-2008

	2007-2008	2008-2009	2009-2010
Number of reference transactions	78	64	451
Total number of filled requests received from other libraries or providers	60	51	16
Participants who received Library Instruction	339	199	210
Number of Items checked out from LCC Campus Library	2,470	3,707	2,702

Source: LCCD Library

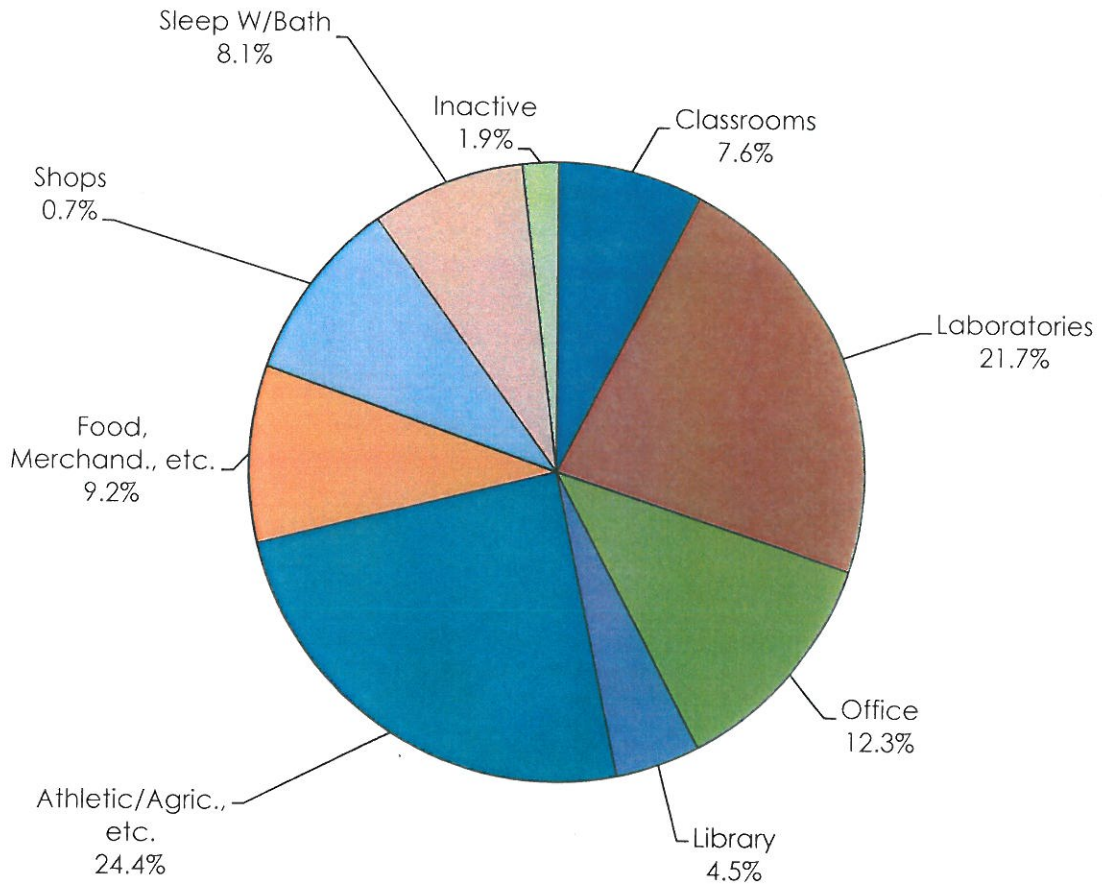


# PHYSICAL FACILITIES



# PHYSICAL FACILITIES

## NET SQUARE FOOTAGE BY TYPE



	Net Square Feet	Percent of Total
100 Classrooms	13,070	7.6%
200 Laboratories	38,572	22.4%
300 Office	21,151	12.3%
400 Library	7,659	4.5%
500 Athletic/Agric., etc.	41,953	24.4%
600 Food, Merchand., etc.	15,909	9.2%
700 Shops etc.	16,573	9.6%
900 Sleep W/Bath	13,898	8.1%
000 Inactive	3,266	1.9%
<b>Total ASF</b>	<b>172,051</b>	<b>100%</b>

Source: California Community Colleges - Fusion - Report 17  
Space Inventory Report

Total Buildings	42
Total Rooms	404
Total Assignable Stations	2,883
Outside Gross Sq. Ft.	248,989

# ANNUAL CAMPUS SECURITY REPORT

OFFENSE	Year	On campus Property	Residential Housing	Public Property
Murder/Non-Negligent Manslaughter	2009	0	0	0
	2010	0	0	0
	2011	0	0	0
Negligent Manslaughter	2009	0	0	0
	2010	0	0	0
	2011	0	0	0
Sex Offenses, Forcible	2009	0	0	0
	2010	0	0	0
	2011	0	0	0
Sex Offenses, Non-Forcible	2009	0	0	0
	2010	0	0	0
	2011	0	0	0
Robbery	2009	0	0	0
	2010	0	0	0
	2011	0	0	0
Aggravated Assault	2009	0	0	0
	2010	0	0	0
	2011	0	0	0
Burglary	2009	0	1	0
	2010	5	0	0
	2011	2	0	0
Motor Vehicle Theft	2009	1	0	0
	2010	0	0	0
	2011	1	0	0
Arson	2009	1	0	0
	2010	0	0	0
	2011	0	0	0
Arrests for Illegal Weapons Possessions	2009	0	0	0
	2010	0	0	0
	2011	0	0	0
Arrests for Drug Law Violations	2009	0	0	0
	2010	0	0	0
	2011	0	0	0
Arrests for Liquor Law Violations	2009	0	0	0
	2010	0	0	0
	2011	0	0	0
Persons Referred for disciplinary action for Illegal Weapons	2009	0	1	0
	2010	0	0	0
	2011	0	1	0
Persons Referred for disciplinary action for Drug Law Violations	2009	0	3	0
	2010	0	0	0
	2011	0	0	0
Persons Referred for disciplinary action for Liquor Law Violations	2009	0	23	0
	2010	0	1	0
	2011	0	0	0
Annual Fire Safety Report, fires in Residence Housing	2009		0	
	2010		1	
	2011		0	

\*No Hate Crimes were reported in 2005, 2006, 2007, 2008, 2009, 2010 or 2011

# OUTREACH



# REGIONAL HIGH SCHOOL GRADUATES

STUDENTS AND AWARDS 2008-09 to 2011-12

## Data for Local High School Students (unduplicated)

2008-09	Students	Correspondence	%	CA	%	AA/AS	%
Almanor High School (Chester)	2	1	50.0%	-	0.0%	-	0.0%
Big Valley High School (Bieber)	33	3	9.1%	-	0.0%	-	0.0%
Chester Jr-Sr Hs Career Ctr (Chester)	45	7	15.6%	1	2.2%	1	2.2%
Cornerstone Christian School (Susanville)	1	-	0.0%	-	0.0%	-	0.0%
Credence High School (Susanville)	58	17	29.3%	-	0.0%	1	1.7%
Greenville High School (Greenville)	30	5	16.7%	-	0.0%	-	0.0%
Herlong High School (Herlong)	36	16	44.4%	1	2.8%	1	2.8%
Indian Valley High School (Greenville)	1	-	0.0%	-	0.0%	-	0.0%
Lassen High School (Susanville)	724	202	27.9%	22	3.0%	23	3.2%
Plumas Charter School (Quincy)	3	1	33.3%	1	33.3%	1	33.3%
Plumas Christian School (Quincy)	1	-	0.0%	-	0.0%	-	0.0%
Portola Jr-Sr High School (Portola)	6	1	16.7%	-	0.0%	-	0.0%
Quincy Senior High School (Quincy)	18	1	5.6%	-	0.0%	-	0.0%
Rocky Ridge High (Susanville)	1	-	0.0%	-	0.0%	-	0.0%
Westwood High School (Westwood)	82	24	29.3%	2	2.4%	2	2.4%
<b>Total</b>	<b>1,041</b>	<b>278</b>	<b>26.7%</b>	<b>27</b>	<b>2.6%</b>	<b>29</b>	<b>2.8%</b>

2009-10	Students	Correspondence	%	CA	%	AA/AS	%
Almanor High School (Chester)	5	1	20.0%	-	0.0%	-	0.0%
Big Valley High School (Bieber)	39	3	7.7%	-	0.0%	-	0.0%
Chester Jr-Sr Hs Career Ctr (Chester)	49	10	20.4%	1	2.0%	1	2.0%
Cornerstone Christian School (Susanville)	3	1	33.3%	-	0.0%	-	0.0%
Credence High School (Susanville)	37	19	51.4%	2	5.4%	1	2.7%
Diamond Mountain Charter High School (Susanville)	4	-	0.0%	-	0.0%	-	0.0%
Greenville High School (Greenville)	22	4	18.2%	-	0.0%	-	0.0%
Herlong High School (Herlong)	45	16	35.6%	1	2.2%	1	2.2%
Lassen High School (Susanville)	739	240	32.5%	30	4.1%	37	5.0%
Plumas Charter School (Quincy)	7	2	28.6%	-	0.0%	-	0.0%
Portola Jr-Sr High School (Portola)	14	4	28.6%	-	0.0%	-	0.0%
Quincy Senior High School (Quincy)	23	2	8.7%	-	0.0%	-	0.0%
Rocky Ridge High (Susanville)	7	-	0.0%	-	0.0%	-	0.0%
Westwood High School (Westwood)	107	43	40.2%	1	0.9%	1	0.9%
<b>Total</b>	<b>1,101</b>	<b>345</b>	<b>31.3%</b>	<b>35</b>	<b>3.2%</b>	<b>41</b>	<b>3.7%</b>
<b>Total</b>	<b>961</b>	<b>299</b>	<b>31.1%</b>	<b>29</b>	<b>3.0%</b>	<b>31</b>	<b>3.2%</b>

## REGIONAL HIGH SCHOOL GRADUATES (CONT.)

STUDENTS AND AWARDS 2008-09 to 2011-12

2010-11	Students	Correspondence	%	CA	%	AA/AS	%
3 Oaks Academy (Janesville)	1	-	0.0%	-	0.0%	-	0.0%
Almanor High School (Chester)	5	1	20.0%	-	0.0%	-	0.0%
Bernard-Mariposa Private School (Janesville)	1	-	0.0%	-	0.0%	-	0.0%
Big Valley High School (Bieber)	20	3	15.0%	-	0.0%	-	0.0%
Chester Jr-Sr Hs Career Ctr (Chester)	45	8	17.8%	-	0.0%	-	0.0%
Credence High School (Susanville)	37	17	45.9%	1	2.7%	1	2.7%
Diamond Mountain Charter High School (Susanville)	6	-	0.0%	-	0.0%	-	0.0%
Greenville High School (Greenville)	11	5	45.5%	-	0.0%	-	0.0%
Herlong High School (Herlong)	35	7	20.0%	-	0.0%	-	0.0%
Lassen High School (Susanville)	642	210	32.7%	26	4.0%	27	4.2%
Plumas Charter School (Quincy)	4	1	25.0%	-	0.0%	-	0.0%
Portola Jr-Sr High School (Portola)	10	4	40.0%	-	0.0%	-	0.0%
Quincy Senior High School (Quincy)	21	2	9.5%	-	0.0%	-	0.0%
Rocky Ridge High (Susanville)	23	-	0.0%	-	0.0%	-	0.0%
Westwood High School (Westwood)	100	41	41.0%	2	2.0%	3	3.0%
<b>Total</b>	<b>961</b>	<b>299</b>	<b>31.1%</b>	<b>29</b>	<b>3.0%</b>	<b>31</b>	<b>3.2%</b>

2011-12	Students	Correspondence	%	CA	%	AA/AS	%
3 Oaks Academy (Janesville)	1	1	100.0%	-	0.0%	-	0.0%
Almanor High School (Chester)	3	1	33.3%	-	0.0%	-	0.0%
Bernard-Mariposa Private School (Janesville)	1	1	100.0%	-	0.0%	-	0.0%
Big Valley High School (Bieber)	16	1	6.3%	-	0.0%	-	0.0%
Chester Jr-Sr Hs Career Ctr (Chester)	37	12	32.4%	-	0.0%	-	0.0%
Cornerstone Christian School (Susanville)	3	2	66.7%	-	0.0%	-	0.0%
Credence High School (Susanville)	23	8	34.8%	-	0.0%	-	0.0%
Diamond Mountain Charter High School (Susanville)	21	5	23.8%	-	0.0%	-	0.0%
Greenville High School (Greenville)	11	3	27.3%	-	0.0%	-	0.0%
Herlong High School (Herlong)	29	8	27.6%	1	3.4%	-	0.0%
Lassen High School (Susanville)	599	214	35.7%	11	1.8%	15	2.5%
Mt. Lassen	2	1	50.0%	-	-	-	0.0%
Plumas Charter School (Quincy)	10	2	20.0%	-	0.0%	-	0.0%
Portola Jr-Sr High School (Portola)	3	1	33.3%	-	0.0%	-	0.0%
Quincy Senior High School (Quincy)	13	1	7.7%	-	0.0%	-	0.0%
Rocky Ridge High (Susanville)	7	1	14.3%	-	0.0%	-	0.0%
Westwood High School (Westwood)	77	27	35.1%	-	0.0%	1	1.3%
<b>Total</b>	<b>856</b>	<b>289</b>	<b>33.8%</b>	<b>12</b>	<b>1.4%</b>	<b>16</b>	<b>1.9%</b>

**Chancellor's Office  
California Community Colleges**

# **California Community College (CCC) Transfers to In-State Private (ISP) and Out-of-State (OOS) Baccalaureate Granting Institutions in 2009-2010**

**April 2012**

**California Community Colleges Chancellor's Office**

**[www.cccco.edu](http://www.cccco.edu)**





Community College	Segment	Four-Year Institution	Students
LASSEN	ISP	UNIVERSITY OF PHOENIX	33
		ACADEMY OF ART UNIVERSITY	3
		CALIFORNIA BAPTIST UNIVERSITY	2
		DEVRY UNIVERSITY-CALIFORNIA	2
		ITT TECHNICAL INSTITUTE	2
		SIMPSON UNIVERSITY	2
		ARGOSY UNIVERSITY	1
		CHAPMAN UNIVERSITY	1
		NATIONAL UNIVERSITY	1
		NOTRE DAME DE NAMUR UNIVERSITY	1
		UNIVERSITY OF THE PACIFIC	1
	Total		49
	OOS	UNIVERSITY OF NEVADA-RENO	14
		ASHFORD UNIVERSITY	12
		UNIVERSITY OF NEVADA-LAS VEGAS	4
		BOISE STATE UNIVERSITY	3
		GRAND CANYON UNIVERSITY	3
		BELLEVUE UNIVERSITY	2
		CAPELLA UNIVERSITY	2
		GREAT BASIN COLLEGE	2
		NEW MEXICO HIGHLANDS UNIVERSITY	2
		PARK UNIVERSITY	2
		WHITWORTH COLLEGE	2
		BRENAU UNIVERSITY	1
		BRIAR CLIFF UNIVERSITY	1
		CENTRAL WASHINGTON UNIVERSITY	1
		CHARTER OAK STATE COLLEGE	1
		COLORADO STATE UNIVERSITY-PUEBLO	1
		CUNY COLLEGE OF STATEN ISLAND	1
		DUQUESNE UNIVERSITY	1
		EASTERN OREGON UNIVERSITY	1
		EVANGEL UNIVERSITY	1
		EXCELSIOR COLLEGE	1
		FAULKNER UNIVERSITY	1
		FRAMINGHAM STATE COLLEGE	1
		GARDNER-WEBB UNIVERSITY	1
		GEORGE FOX UNIVERSITY	1
		GEORGETOWN UNIVERSITY	1
		INDIANA INSTITUTE OF TECHNOLOGY	1
		INDIANA UNIVERSITY-SOUTH BEND	1
		LOYOLA UNIVERSITY NEW ORLEANS	1
		MOUNT ST MARY'S UNIVERSITY	1
		MULTNOMAH BIBLE COLLEGE AND BIBLICAL SEMINARY	1
		NEWBERRY COLLEGE	1
		NICHOLLS STATE UNIVERSITY	1
		NORTHERN ARIZONA UNIVERSITY	1
		OREGON STATE UNIVERSITY	1
		PORTLAND STATE UNIVERSITY	1
		SAINT JOSEPHS UNIVERSITY	1
		SOUTHERN OREGON UNIVERSITY	1
		SOUTHWESTERN OKLAHOMA STATE UNIVERSITY	1
		TROY STATE UNIVERSITY-MAIN CAMPUS	1
UNIVERSITY OF ALASKA ANCHORAGE	1		

Community College	Segment	Four-Year Institution	Students
LASSEN	OOS	UNIVERSITY OF ARKANSAS MAIN CAMPUS	1
		UNIVERSITY OF HAWAII AT MANOA	1
		UNIVERSITY OF IDAHO	1
		UNIVERSITY OF IOWA	1
		UNIVERSITY OF MAINE	1
		UNIVERSITY OF MARYLAND-UNIVERSITY COLLEGE	1
		UTAH STATE UNIVERSITY	1
		WALDORF COLLEGE	1
		WASHINGTON STATE UNIVERSITY	1
		WESTERN GOVERNORS UNIVERSITY	1
	Total		88